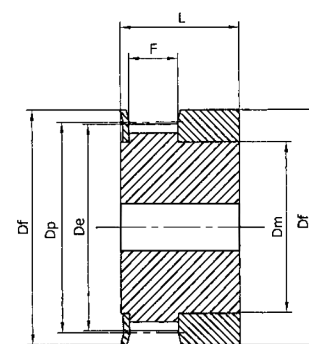


T 5 (шаг 5 мм) для ремня шириной 10 мм

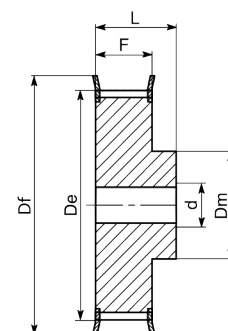
| Обозначение | КОД | Тип шкива | Типоразмер реборды | К-во зубьев | Dr, мм | De, мм | Df, мм | Dm, мм | F, мм | L, мм | d, мм | Масса, кг |
|-------------|---------|-----------|--------------------|-------------|--------|--------|--------|--------|-------|-------|-------|-----------|
| 21T5/10-2 | 21T5010 | 6F | F06 | 10 | 16,05 | 15,05 | 20,0 | 8 | 15 | 21 | 4 | 0,012 |
| 21T5/12-2 | 21T5012 | 6F | F07 | 12 | 19,25 | 18,25 | 23,0 | 11 | 15 | 21 | 4 | 0,016 |
| 21T5/14-2 | 21T5014 | 6F | F08 | 14 | 22,45 | 21,45 | 25,0 | 13 | 15 | 21 | 4 | 0,019 |
| 21T5/15-2 | 21T5015 | 6F | F09 | 15 | 24,05 | 23,05 | 28,0 | 16 | 15 | 21 | 6 | 0,021 |
| 21T5/16-2 | 21T5016 | 6F | F10 | 16 | 25,06 | 24,60 | 32,0 | 18 | 15 | 21 | 6 | 0,025 |
| 21T5/18-2 | 21T5018 | 6F | F10 | 18 | 28,80 | 27,80 | 32,0 | 20 | 15 | 21 | 6 | 0,031 |
| 21T5/19-2 | 21T5019 | 6F | F12 | 19 | 30,40 | 29,40 | 36,0 | 22 | 15 | 21 | 6 | 0,036 |
| 21T5/20-2 | 21T5020 | 6F | F12 | 20 | 32,00 | 31,00 | 36,0 | 23 | 15 | 21 | 6 | 0,038 |
| 21T5/22-2 | 21T5022 | 6F | F14 | 22 | 35,15 | 34,15 | 38,0 | 24 | 15 | 21 | 6 | 0,054 |
| 21T5/24-2 | 21T5024 | 6F | F15 | 24 | 38,40 | 37,40 | 42,0 | 26 | 15 | 21 | 6 | 0,056 |
| 21T5/25-2 | 21T5025 | 6F | F17 | 25 | 39,95 | 38,95 | 44,0 | 26 | 15 | 21 | 6 | 0,058 |
| 21T5/26-2 | 21T5026 | 6F | F17 | 26 | 41,60 | 40,60 | 44,0 | 26 | 15 | 21 | 6 | 0,064 |
| 21T5/27-2 | 21T5027 | 6F | F18 | 27 | 43,20 | 42,20 | 48,0 | 30 | 15 | 21 | 8 | 0,070 |
| 21T5/28-2 | 21T5028 | 6F | F18 | 28 | 44,75 | 43,75 | 48,0 | 32 | 15 | 21 | 8 | 0,075 |
| 21T5/30-2 | 21T5030 | 6F | F19 | 30 | 47,95 | 46,95 | 51,0 | 34 | 15 | 21 | 8 | 0,081 |
| 21T5/32-2 | 21T5032 | 6F | F20 | 32 | 51,10 | 50,10 | 54,0 | 38 | 15 | 21 | 8 | 0,088 |
| 21T5/36-2 | 21T5036 | 6F | F24 | 36 | 57,45 | 56,45 | 64,0 | 38 | 15 | 21 | 8 | 0,114 |
| 21T5/40-2 | 21T5040 | 6F | F25 | 40 | 63,85 | 62,85 | 66,0 | 40 | 15 | 21 | 8 | 0,138 |
| 21T5/42-2 | 21T5042 | 6F | F26 | 42 | 67,00 | 66,00 | 70,0 | 40 | 15 | 21 | 8 | 0,165 |
| 21T5/44-0 | 21T5044 | 6 | - | 44 | 70,20 | 69,20 | - | 45 | 15 | 21 | 8 | 0,200 |
| 21T5/48-0 | 21T5048 | 6 | - | 48 | 76,55 | 75,55 | - | 50 | 15 | 21 | 8 | 0,307 |
| 21T5/60-0 | 21T5060 | 6 | - | 60 | 95,65 | 94,65 | - | 65 | 15 | 21 | 8 | 0,180 |



Тип 1F

T 5 (шаг 5 мм) для ремня шириной 16 мм

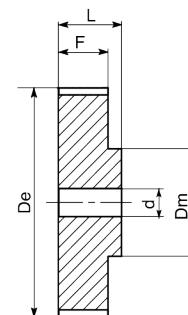
| Обозначение | КОД | Тип шкива | Типоразмер реборды | К-во зубьев | Dr, мм | De, мм | Df, мм | Dm, мм | F, мм | L, мм | d, мм | Масса, кг |
|-------------|---------|-----------|--------------------|-------------|--------|--------|--------|--------|-------|-------|-------|-----------|
| 27T5/10-2 | 27T5010 | 6F | F06 | 10 | 16,05 | 15,05 | 20,0 | 8 | 21 | 27 | 4 | 0,016 |
| 27T5/12-2 | 27T5012 | 6F | F07 | 12 | 19,25 | 18,25 | 23,0 | 11 | 21 | 27 | 4 | 0,022 |
| 27T5/14-2 | 27T5014 | 6F | F08 | 14 | 22,45 | 21,45 | 25,0 | 13 | 21 | 27 | 4 | 0,026 |
| 27T5/15-2 | 27T5015 | 6F | F09 | 15 | 24,05 | 23,05 | 28,0 | 16 | 21 | 27 | 6 | 0,029 |
| 27T5/16-2 | 27T5016 | 6F | F10 | 16 | 25,06 | 24,60 | 32,0 | 18 | 21 | 27 | 6 | 0,035 |
| 27T5/18-2 | 27T5018 | 6F | F10 | 18 | 28,80 | 27,80 | 32,0 | 20 | 21 | 27 | 6 | 0,043 |
| 27T5/19-2 | 27T5019 | 6F | F12 | 19 | 30,40 | 29,40 | 36,0 | 22 | 21 | 27 | 6 | 0,049 |
| 27T5/20-2 | 27T5020 | 6F | F12 | 20 | 32,00 | 31,00 | 36,0 | 23 | 21 | 27 | 6 | 0,053 |
| 27T5/22-2 | 27T5022 | 6F | F14 | 22 | 35,15 | 34,15 | 38,0 | 24 | 21 | 27 | 6 | 0,062 |
| 27T5/24-2 | 27T5024 | 6F | F15 | 24 | 38,40 | 37,40 | 42,0 | 26 | 21 | 27 | 6 | 0,076 |
| 27T5/25-2 | 27T5025 | 6F | F17 | 25 | 39,95 | 38,95 | 44,0 | 26 | 21 | 27 | 6 | 0,081 |
| 27T5/26-2 | 27T5026 | 6F | F17 | 26 | 41,60 | 40,60 | 44,0 | 26 | 21 | 27 | 6 | 0,085 |
| 27T5/27-2 | 27T5027 | 6F | F18 | 27 | 43,20 | 42,20 | 48,0 | 30 | 21 | 27 | 8 | 0,090 |
| 27T5/28-2 | 27T5028 | 6F | F18 | 28 | 44,75 | 43,75 | 48,0 | 32 | 21 | 27 | 8 | 0,095 |
| 27T5/30-2 | 27T5030 | 6F | F19 | 30 | 47,95 | 46,95 | 51,0 | 34 | 21 | 27 | 8 | 0,105 |
| 27T5/32-2 | 27T5032 | 6F | F20 | 32 | 51,10 | 50,10 | 54,0 | 38 | 21 | 27 | 8 | 0,123 |
| 27T5/36-2 | 27T5036 | 6F | F24 | 36 | 57,45 | 56,45 | 64,0 | 38 | 21 | 27 | 8 | 0,160 |
| 27T5/40-2 | 27T5040 | 6F | F25 | 40 | 63,85 | 62,85 | 66,0 | 40 | 21 | 27 | 8 | 0,193 |
| 27T5/42-2 | 27T5042 | 6F | F26 | 42 | 67,00 | 66,00 | 70,0 | 40 | 21 | 27 | 8 | 0,245 |
| 27T5/44-0 | 27T5044 | 6 | - | 44 | 70,20 | 69,20 | - | 45 | 21 | 27 | 8 | 0,280 |
| 27T5/48-0 | 27T5048 | 6 | - | 48 | 76,55 | 75,55 | - | 50 | 21 | 27 | 8 | 0,430 |
| 27T5/60-0 | 27T5060 | 6 | - | 60 | 95,65 | 94,65 | - | 65 | 21 | 27 | 8 | 0,108 |



Тип 6F

T 5 (шаг 5 мм) для ремня шириной 25 мм

| Обозначение | КОД | Тип шкива | Типоразмер реборды | К-во зубьев | Dr, мм | De, мм | Df, мм | Dm, мм | F, мм | L, мм | d, мм | Масса, кг |
|-------------|---------|-----------|--------------------|-------------|--------|--------|--------|--------|-------|-------|-------|-----------|
| 36T5/10-2 | 36T5010 | 6F | F06 | 10 | 16,05 | 15,05 | 20,0 | 8 | 30 | 36 | 4 | 0,023 |
| 36T5/12-2 | 36T5012 | 6F | F07 | 12 | 19,25 | 18,25 | 23,0 | 11 | 30 | 36 | 4 | 0,031 |
| 36T5/14-2 | 36T5014 | 6F | F08 | 14 | 22,45 | 21,45 | 25,0 | 13 | 30 | 36 | 4 | 0,037 |
| 36T5/15-2 | 36T5015 | 6F | F09 | 15 | 24,05 | 23,05 | 28,0 | 16 | 30 | 36 | 6 | 0,041 |
| 36T5/16-2 | 36T5016 | 6F | F10 | 16 | 25,06 | 24,60 | 32,0 | 18 | 30 | 36 | 6 | 0,050 |
| 36T5/18-2 | 36T5018 | 6F | F10 | 18 | 28,80 | 27,80 | 32,0 | 20 | 30 | 36 | 6 | 0,061 |
| 36T5/19-2 | 36T5019 | 6F | F12 | 19 | 30,40 | 29,40 | 36,0 | 22 | 30 | 36 | 6 | 0,070 |
| 36T5/20-2 | 36T5020 | 6F | F12 | 20 | 32,00 | 31,00 | 36,0 | 23 | 30 | 36 | 6 | 0,076 |
| 36T5/22-2 | 36T5022 | 6F | F14 | 22 | 35,15 | 34,15 | 38,0 | 24 | 30 | 36 | 6 | 0,092 |
| 36T5/24-2 | 36T5024 | 6F | F15 | 24 | 38,40 | 37,40 | 42,0 | 26 | 30 | 36 | 8 | 0,109 |
| 36T5/25-2 | 36T5025 | 6F | F17 | 25 | 39,95 | 38,95 | 44,0 | 26 | 30 | 36 | 8 | 0,116 |
| 36T5/26-2 | 36T5026 | 6F | F17 | 26 | 41,60 | 40,60 | 44,0 | 26 | 30 | 36 | 8 | 0,121 |
| 36T5/27-2 | 36T5027 | 6F | F18 | 27 | 43,20 | 42,20 | 48,0 | 30 | 30 | 36 | 8 | 0,128 |
| 36T5/28-2 | 36T5028 | 6F | F18 | 28 | 44,75 | 43,75 | 48,0 | 32 | 30 | 36 | 8 | 0,142 |
| 36T5/30-2 | 36T5030 | 6F | F19 | 30 | 47,95 | 46,95 | 51,0 | 34 | 30 | 36 | 8 | 0,150 |
| 36T5/32-2 | 36T5032 | 6F | F20 | 32 | 51,10 | 50,10 | 54,0 | 38 | 30 | 36 | 8 | 0,176 |
| 36T5/36-2 | 36T5036 | 6F | F24 | 36 | 57,45 | 56,45 | 64,0 | 38 | 30 | 36 | 8 | 0,230 |
| 36T5/40-2 | 36T5040 | 6F | F25 | 40 | 63,85 | 62,85 | 66,0 | 40 | 30 | 36 | 8 | 0,276 |
| 36T5/42-2 | 36T5042 | 6F | F26 | 42 | 67,00 | 66,00 | 70,0 | 40 | 30 | 36 | 8 | 0,352 |
| 36T5/44-0 | 36T5044 | 6 | - | 44 | 70,20 | 69,20 | - | 45 | 30 | 36 | 8 | 0,400 |
| 36T5/48-0 | 36T5048 | 6 | - | 48 | 76,55 | 75,55 | - | 50 | 30 | 36 | 8 | 0,614 |
| 36T5/60-0 | 36T5060 | 6 | - | 60 | 95,65 | 94,65 | - | 65 | 30 | 36 | 8 | 0,180 |



Тип 6

Материал: алюминий 6082
T6 UNI 9006/4, пригодный
для анодной обработки