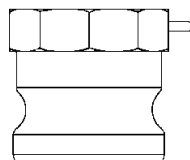


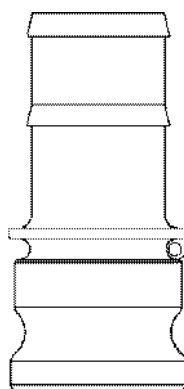
Cam & Groove Type Line Drawings

B



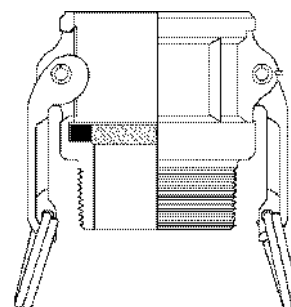
Type A

(male adapter x female NPT)



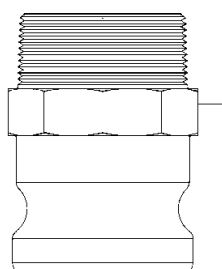
Type E

(male adapter x hose shank)



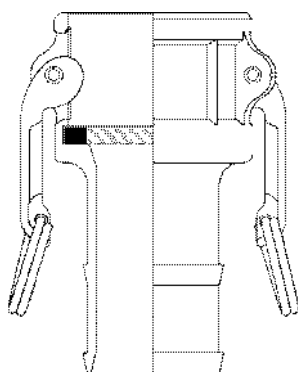
Type B

(female adapter x male NPT)



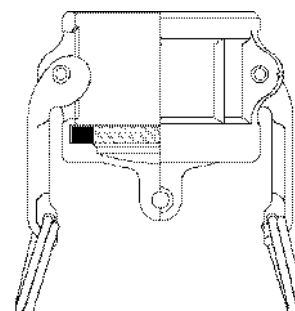
Type F

(male adapter x male NPT)



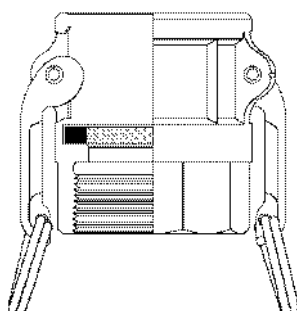
Type C

(female coupler x hose shank)



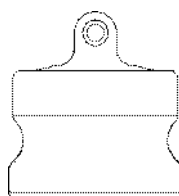
Type DC*

(dust cap)



Type D

(female coupler x female NPT)



Type DP*

(dust plug)

Note: Line drawings are representative of the Dixon line of cam and groove.

* Dust caps and dust plugs are not to be used in pressure applications for safety and environmental reasons.

WARNING:
Under no circumstances should cam and groove couplings be used for compressed air or steam service!

All “Dixon”, “Andrews”, “Boss-Lock” and “EZ Boss-Lock” Cam & Groove couplers and adapters are produced to interchange with all product produced to A-A-59326B.

No standard exists for 1/2”, 5” and 8” fittings, and generally these sizes do not interchange with other manufacturers.

“Andrews” and “Boss-Lock” Cam and Groove Couplings do not interchange in the 8” size. (8” “Andrews” design has 4 cam arms).

DIN Standard Cam & Groove Couplers are produced in accordance with BS EN 14420-7:2004 (formally DIN2828).

Dixon High Pressure couplings will interchange dimensionally with both A-A-59326B and BS EN 14420-7:2004. Couplings for Rubber Hose are available to special order.

Dust Caps and Dust Plugs are **NOT** to be used in pressure applications for safety and environmental reasons.

Threads:

Male threads are either BSPT in accordance with BS21/DIN 2999 or NPT in accordance with ANSI/ASME B1.20.1

Female threads are either BSP PL. in accordance with BS2779/DIN ISO 228 or NPT in accordance with ANSI/ASME B1.20.1

PRESSURE RATINGS FOR A-A-59326B COUPLINGS							
SIZE	0.5in DN15	0.75in-2in DN20-DN50	2.5in DN65	3in DN80	4in DN100	5in and 6in DN125-DN150	8in DN200
A-A-59326B BSEN14420	150 psi	250 psi 10 Bar	150 psi 10 Bar	125 psi 10 Bar	100 psi 10 Bar	75 psi	50 psi

Pressure Ratings for Dixon High Pressure Cam & Groove Couplings – 60 Bar all sizes with the exception of 2.5” x 2” Coupler (HPCG65BSPF) which is 100 bar/1450 psi.

Pressure Ratings for Polypropylene Cam & Groove – 100 psi/7 Bar.

Note: All pressure recommendations are based on mating couplings at ambient temperature 21°C (70°F).

Types:

Andrews / Dixon



Boss Lock



EZ Boss Lock



DIXON CAM & GROOVE TYPE F ADAPTER X BSPT & NPT A-A-59326B



BSPT PART NO.	NPT PART NO.	SIZE	MATERIAL
50FALB	50FALN	1/2"	Aluminium
75FALB	75FALN	3/4"	Aluminium
100FALB	100FALN	1"	Aluminium
125FALB	125FALN	1 1/4"	Aluminium
150FALB	150FALN	1 1/2"	Aluminium
200FALB	200FALN	2"	Aluminium
250FALB	250FALN	2 1/2"	Aluminium
300FALB	300FALN	3"	Aluminium
400FALB	400FALN	4"	Aluminium
500FALB	500FALN	5"	Aluminium
600FALB	600FALN	6"	Aluminium
DAL50 FB	DAL50 FN	1/2"	Die Cast Aluminium
DAL75 FB	DAL75 FN	3/4"	Die Cast Aluminium
DAL100 FB	DAL100 FN	1"	Die Cast Aluminium
DAL125 FB	DAL125 FN	1 1/4"	Die Cast Aluminium
DAL150 FB	DAL150 FN	1 1/2"	Die Cast Aluminium
DAL200 FB	DAL200 FN	2"	Die Cast Aluminium
DAL250 FB	DAL250 FN	2 1/2"	Die Cast Aluminium
DAL300 FB	DAL300 FN	3"	Die Cast Aluminium
DAL400 FB	DAL400 FN	4"	Die Cast Aluminium
50FBRB	50FBRN	1/2"	Brass
75FBRB	75FBRN	3/4"	Brass
100FBRB	100FBRN	1"	Brass
125FBRB	125FBRN	1 1/4"	Brass
150FBRB	150FBRN	1 1/2"	Brass
200FBRB	200FBRN	2"	Brass
250FBRB	250FBRN	2 1/2"	Brass
300FBRB	300FBRN	3"	Brass
400FBRB	400FBRN	4"	Brass
500FBRB	500FBRN	5"	Brass
600FBRB	600FBRN	6"	Brass
50FSSB	50FSSN	1/2"	Stainless Steel
75FSSB	75FSSN	3/4"	Stainless Steel
100FSSB	100FSSN	1"	Stainless Steel
125FSSB	125FSSN	1 1/4"	Stainless Steel
150FSSB	150FSSN	1 1/2"	Stainless Steel
200FSSB	200FSSN	2"	Stainless Steel
250FSSB	250FSSN	2 1/2"	Stainless Steel
300FSSB	300FSSN	3"	Stainless Steel
400FSSB	400FSSN	4"	Stainless Steel
500FSSB	500FSSN	5"	Stainless Steel
600FSSB	600FSSN	6"	Stainless Steel
75FPPB	75FPPN	3/4"	Polypropylene
100FPPB	100FPPN	1"	Polypropylene
125FPPB	125FPPN	1 1/2" x 1 1/4"	Polypropylene
150FPPB	150FPPN	1 1/2"	Polypropylene
200FPPB	200FPPN	2"	Polypropylene
300FPPB	300FPPN	3"	Polypropylene
400FPPB	400FPPN	4"	Polypropylene



"ANDREWS" TYPE F - 'REDUCER ADAPTER x MALE THREAD'

PART NO.	SIZE	THREAD AVAILABLE	MATERIAL
3020-F-SS	3" x 2"	NPT	Stainless Steel