



Roughness parameters according to: ISO 4287, ISO 13565-1, ISO 13565-2, ISO 12085, VDA 2007



Z = 2 mm  
X = 50 mm



Z = 0,1  $\mu$ m  
X = 0,4 to 4,0  $\mu$ m according to the length being measured



Z = 3,5 + 0,75\*H microns, (H in the Z axis, in mm) X = 3,5 + L/10 microns (L in the X axis, in mm)



0,3 mg (0,003 mN) with the SB2000 probe



1 mm/s



Maximum angle of 70° (upward position); maximum angle of 85° (downward position)

## TESA PROFILE SET 2 mm

PROFILE SET 2 mm for profile measurement (compatible with RUGOSURF 90G).

When equipped with the SB2000 probe and used with the PROFILE STUDIO software dedicated for profile measurement STUDIO PROFILE, the RUGOSURF 90G roughness gauge converts into a profile-measuring tool.

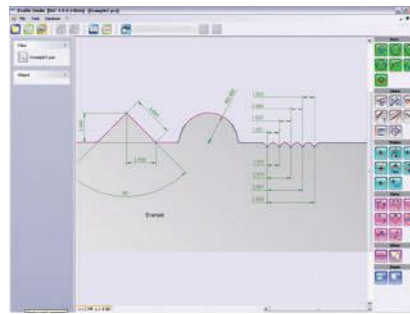
A simple, ingenious and accurate solution, this optional accessory measures lengths, radii and angles of parts which are sometimes impossible to verify by other means.

The setting up and the evaluation of measurements is simple and fast. Dimensions can be inserted into the measured profile after defining geometric elements (point, line, arc or intersection between two lines, for example). The tolerance values allow verification of the results at a glance. Rotation and symmetry of the profile also allows its orientation.

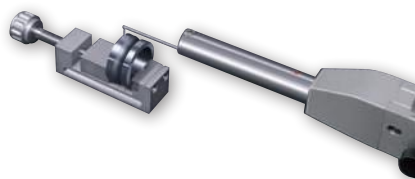
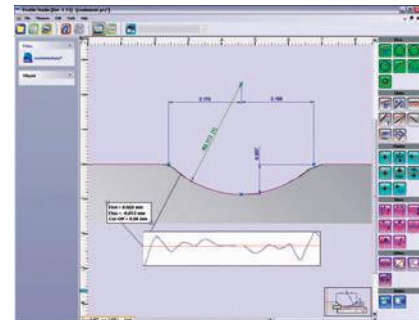
A previous measurement can be used as model for the repeated measurement of a part of identical geometry. This saves valuable time and facilitates operations as important manual measurements can be replicated automatically.

A standard profile with a measurement report is included in the PROFILE SET 2 mm set.

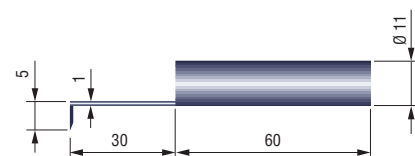
A detailed measurement report with customizable header can be generated from the PROFILE STUDIO software.



PROFILE STUDIO software



SB2000 probe



No

=

**06960100** PROFILE SET 2 mm for profile measurement with RUGOSURF 90G

**DELIVERED WITH THE FOLLOWING ACCESSORIES:**

**06960101** PROFILE STUDIO Software

**06960102** SB2000 probe for PROFILE SET 2 mm, R = 15  $\mu$ m, 20°

**06960103** Setting master for PROFILE SET 2 mm

**06960062** Cable RUGOSURF 10G and RUGOSURF 90G to PC (connector v3)

