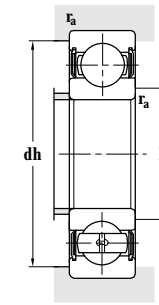
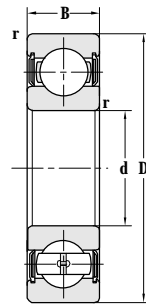
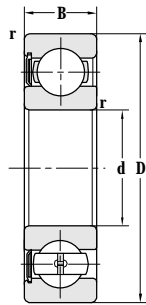


Deep Groove Ball Bearing (With Seals)



d 35-50 mm



Principal dimensions				Basic load ratings		Limit speed ratings
d	D	B	r _{min}	C _r	C _{or}	Grease
mm				kN		r/min
35	80	21	1.5	33.4	19.2	6000
40	68	15	1	16.8	11.6	6300
	80	18	1.1	31.2	18.2	5600
	80	18	1.1	31.2	18.2	5600
	80	18	1.1	31.2	18.2	5600
	80	21	1.1	31.2	18.2	5600
	85	22	1.5	32.5	20.4	5000
	90	23	1.5	41.0	24.0	5000
	90	23	1.5	41.0	24.0	5000
	90	23	1.5	41.0	24.0	7500
	109.5	31	1.5	41.0	24.0	5000
110	27	2	67.5	36.0	6700	
45	75	16	1	20.0	14.0	5600
	75	16	1	20.0	14.0	5600
	75	16	1	20.0	14.0	5600
	75	16	1	20.0	14.0	5600
	85	19	1.1	33.7	20.7	5300
	85	19	1.1	33.7	20.7	7500
	85	19	1.1	33.7	20.7	5300
	85	19	1.1	33.7	20.7	5300
	85	19	1.1	33.7	20.7	5300
	85	19	1.1	33.7	20.7	5300
	85	21	1.1	33.7	20.7	5300
	100	25	1.5	52.5	30.0	4500
	100	25	1.5	52.5	30.0	4500
	100	25	1.5	48.5	29.5	7000
	100	36	1.5	51.0	31.0	4500
127	31.5	1.5	48.5	29.5	4500	
50	65	7	0.3	5.85	5.69	8100
	72	12	0.6	13.4	11.2	9900
	80	16	1	22.0	16.3	5000
	80	16	1	22.0	16.3	5000
	90	20	1.1	35.6	22.3	4800
	90	33	1.1	35.6	22.3	4800

Designations	Abutment and fillet dimensions				Weight
	D _{smin}	D _{smax}	dh _{max}	r _{amax}	
	mm				kg
6307-2RS	43		72	1.5	0.491
6008-2RS	44.6		63.4	1	0.206
6208-RS	46.5	50.5	73.5	1	0.385
6208-RS2	46.5	50.5	73.5	1	0.385
6208-2RS	46.5	50.5	73.5	1	0.408
62208X2WB-2RS/P53	46.5	50.5	73.5	1	0.525
6308X3-2RS	48		78	1.5	0.704
6308-RS	48		82	1.5	0.643
6308-2RS	48		82	1.5	0.641
6308-2RZ	48		82	1.5	0.643
6308X3-2RS/YA6	48		82	1.5	1.480
6408-2RS/YA5	49		101	2	1.300
6009-RS	50		70	1	0.245
6009-RS2	50		70	1	0.245
6009-2RS	50		70	1	0.250
6009-2RS/FR	50		70	1	0.250
6209-RS	51.5		78.5	1	0.441
6209-2RZ	51.5		78.5	1	0.442
6209-RS2	51.5		78.5	1	0.435
6209-2RS	51.5		78.5	1	0.442
6209-2RSK	51.5		78.5	1	0.433
62209X2WB-2RS/P53	51.5		78.5	1	0.544
6309-2RS	53		92	1.5	0.861
6309-RS	53		92	1.5	0.853
6309-2RZ	53		92	1.5	0.861
62309-2RS	53		92	1.5	1.150
6309X3-2RS/YA6	53		112	1.5	2.040
FL-61810-2RS/P6	53		62	0.3	0.0552
FL-61910-2RS/P5	54		68	0.6	0.135
6010-2RZ	54.6		75.4	1	0.255
6010-2RS	54.6		75.4	1	0.258
6210-2RS	56.5		83.5	1	0.498
62210X2-XRS2	57		83	1	0.727