



Angle can be locked using a single bolt.



Lacquered cast iron base



Clamp aperture: 16 mm (TESA) or 20 mm (ETALON)

Micrometer Stands

For external micrometers up to 300 mm as well as many other hand-held tools.



00160201	TESA micrometer stand with clamp aperture 16 mm
072110123	ETALON micrometer stand with clamp aperture 20 mm



Length tolerance with reference to the nominal dimension: $\pm 100 \mu\text{m}$



Each set is supplied in a wooden case



Declaration of conformity



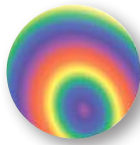
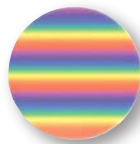
Flatness tolerances for optical parallels with lengths:
 $\leq 27,335 \text{ mm} = 0,15 \mu\text{m} \geq 52,00 \div 77,335 \text{ mm} = 0,2 \mu\text{m}$



Tolerances in parallelism for optical parallels with lengths:
 $\leq 27,335 \text{ mm}: 0,4 \mu\text{m}$
 $\geq 52,00 \div 77,335 \text{ mm}: 0,5 \mu\text{m}$

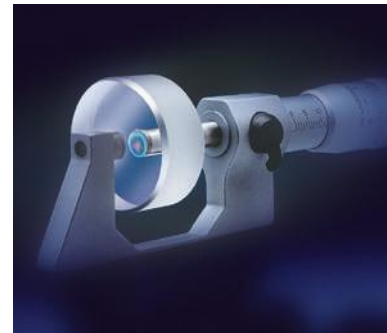


31 mm



Optical Flats with Two Parallel Faces

Used for examining the flatness and parallelism of the measuring faces on external micrometers as well as other similar measuring instruments. The difference in length of the optical flats within a set matches a quarter or a third of the spindle pitch of 0,5 mm.



No	=	G
		mm
02510000	Set interference glass 12 ÷ 12,375 mm	12,00 ÷ 12,375
02510001	Interference glass 12	12,00
02510002	Interference glass 12,125	12,125
02510003	Interference glass 12,25 mm	12,25
02510004	Interference glass 12,375 mm	12,375
02510100	Set interference glass 27 ÷ 27,335 mm	27,00 ÷ 27,335
02510101	Interference glass 27 mm	27,00
02510102	Interference glass 27,165 mm	27,165
02510103	Interference glass 27,335 mm	27,335
02510200	Set interference glass 52 - 52,3	52,00 ÷ 52,335
02510201	Interference glass 52 mm	52,00
02510202	Interference glass 52,165 mm	52,165
02510203	Interference glass 52,335 mm	52,335
02510300	Set interference glass 77 ÷ 77,335 mm	77,00 ÷ 77,335
02510301	Interference glass 77,00 mm	77,00
02510302	Interference glass 77,165 mm	77,165
02510303	Interference glass 77,335 mm	77,335

