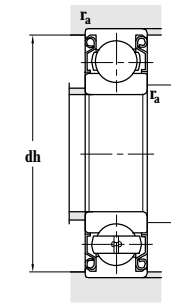
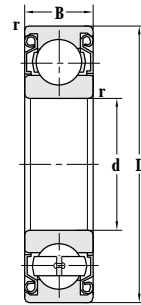
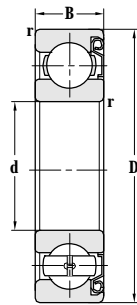


Deep Groove Ball Bearing (With Shields)

d 85-100 mm



Principal dimensions				Basic load ratings		Limit speed ratings	
d	D	B	r _{min}	C _r	C _{or}	Grease	Oil
mm				kN		r/min	
85	130	22	1.1	47.5	40.0	5000	6000
	150	28	2	84.0	62.0	4300	5000
	150	28	2	84.0	62.0	4300	5000
	150	28	2	84.0	62.0	4300	5000
	180	41	3	102	96.5	4300	5000
	180	41	3	102	96.5	4300	5000
	180	41	3	102	96.5	4300	5000
	180	41	3	102	96.5	4300	5000
	180	41	3	102	96.5	4300	5000
	180	41	3	102	96.5	4300	5000
90	140	24	1.5	58.5	50.1	4800	5600
	140	24	1.5	58.5	50.0	4800	5600
	160	30	2	97.0	72.0	3800	4500
	160	30	2	97.0	72.0	3800	4500
	160	30	2	97.0	72.0	3800	4500
	190	43	3	144	108	3400	4000
	190	43	3	144	108	3400	4000
	190	43	3	144	108	3400	4000
	190	43	3	144	108	3400	4000
	190	43	3	144	108	3400	4000
95	130	18	1.1	33.8	33.0	4600	5400
	145	24	1.5	78.5	54.0	4500	5300
	145	24	1.5	78.5	54.0	4500	5300
	145	24	1.5	78.5	54.0	4500	5300
	170	32	2.1	110	80.0	3600	4300
	170	32	2.1	110	80.0	3600	4300
	170	32	2.1	110	80.0	3600	4300
	200	45	3	152	118	3200	3800
	200	50	3	152	118	3200	3800
	200	45	3	152	118	3200	3800
	200	45	3	152	118	3200	3800
	200	45	3	152	118	3200	3800
	100	150	24	1.5	62.4	52.9	4300
150		24	1.5	62.4	52.9	4300	5000
150		24	1.5	62.4	52.9	4300	5000

Designations	Abutment and fillet dimensions				Weight
	D _{smin}	D _{smax}	dh _{max}	r _{amax}	
	mm				kg
6017-2Z	92		123	1	0.965
6217-Z	94		141	2	1.85
6217-2Z	94	99	141	2	1.85
6217-2Z/YA7	94	99	141	2	1.81
6317-Z	98		167	2.5	4.35
6317-2Z	98		167	2.5	4.35
6317-2Z/YA7	98	107	167	2.5	4.35
IS-6317-2Z/P6CMV2	98		167	2.5	4.30
6317-2Z/P6CMV2	98		167	2.5	4.30
6018-Z	98		132	1.5	1.16
6018-2Z	98		132	1.5	1.17
6218-Z	99		151	2	2.21
6218-2Z	99		151	2	2.21
6218-2Z/YA7	99	105	151	2	2.20
6318-2Z/YA7	103	114	177	2.5	5.04
6318M-Z/YA8P54	103		177	2.5	6.39
6318-2Z	103		177	2.5	5.07
6318-Z	103		177	2.5	5.04
61919-Z	101.5		123.5	1	0.579
6019-Z	103		137	1.5	1.16
6019-Z/HQ1	103		137	1.5	1.31
6019-2Z	103		137	1.5	1.17
6219-Z	106	111	159	2	2.63
6219-2Z	106	111	159	2	2.65
6219-2Z/YA7	106	111	159	2	2.62
6319-2Z	108	113	187	2.5	5.93
6319X2K-2Z	77		187	2.5	6.40
6319-Z	109		186	2.5	5.87
IS-6319	109		186	2.5	5.48
6319-2Z/YA7	108	113	187	2.5	5.89
6020-2Z	108		142	1.5	1.17
6020-2Z/C9	108	110	142	1.5	1.13
6020-Z	108		142	1.5	1.15