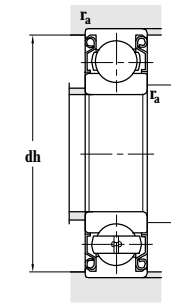
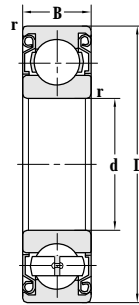
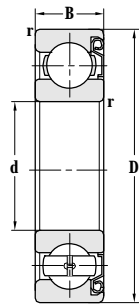


Deep Groove Ball Bearing (With Shields)

d 35-50 mm



Principal dimensions				Basic load ratings		Limit speed ratings	
d	D	B	r _{min}	C _r	C _{or}	Grease	Oil
mm				kN		r/min	
35	62	14	1	16.0	10.3	10000	13000
	62	14	1	16.0	10.3	10000	13000
	72	17	1.1	26.0	14.7	9000	11000
	72	17	1.1	26.0	14.7	9000	11000
	80	21	1.5	33.4	19.2	8500	10000
	80	21	1.5	33.4	19.2	8500	10000
	100	25	1.5	51.5	29.0	7100	8500
	100	25	1.5	51.5	29.0	7100	8500
40	68	15	1	16.8	11.6	9500	12000
	68	15	1	16.8	11.6	9500	12000
	80	18	1.1	31.2	18.2	8500	10000
	80	18	1.1	31.2	18.2	8500	10000
	80	18	1.1	31.2	18.2	5600	10000
	90	23	1.5	41.0	24.0	7500	9000
	90	23	1.5	41.0	24.0	7500	9000
	90	23	1.5	41.0	24.0	7500	9000
45	75	16	1	21.2	14.0	9000	11000
	75	16	1	21.2	14.0	9000	11000
	85	19	1.1	33.7	20.7	7500	9000
	85	19	1.1	33.7	20.7	7500	9000
	85	19	1.1	33.7	20.7	7500	9000
	100	25	1.5	48.5	29.5	6700	8000
	100	25	1.5	52.5	30.0	6700	8000
	100	25	1.5	52.5	30.0	6700	8000
	100	25	1.5	52.5	30.0	6700	8000
	120	29	2	73.0	43.0	6000	7000
	50	80	16	1	22.0	16.3	8500
80		16	1	22.0	16.3	8500	10000
90		20	1.1	35.6	22.3	7000	8500
90		20	1.1	35.6	22.3	7000	8500
90		20	1.1	35.6	22.3	7000	8500
110		27	2	62.0	38.0	6300	7500
110		27	2	62.0	38.0	6300	7500
110		27	2	62.0	38.0	6300	7500
110		27	2	62.0	38.0	6300	7500

Designations	Abutment and fillet dimensions				Weight
	D _{smin}	D _{smax}	dh _{max}	r _{amax}	
	mm				kg
6007-2Z	39.6		57.4	1	0.154
6007-Z/C3	40		57	1	0.154
6207-2Z	41.5		65.5	1	0.397
6207-Z	41.5		65.5	1	0.390
6307-2Z	43		72	1.5	0.476
6307-Z	43		72	1.5	0.466
6407-Z	46		89	1.5	0.972
6407-2Z	46		89	1.5	0.976
6008-2Z	45		63	1	0.191
6008-RZ	45		63	1	0.196
6208-2Z	46.5	50.5	73.5	1	0.374
6208-Z	46.5		73.5	1	0.367
6208-2RZ	46.5	50.5	73.5	1	0.408
6308-2Z	48	50.5	82	1.5	0.651
6308-2Z/YA7	48	52	82	1.5	0.641
6308-Z	48		82	1.5	0.644
6009-2Z	50.8		69.2	1	0.245
6009-2Z/C3	50.8		69.2	1	0.245
6209-2Z	51.5		78.5	1	0.439
6209-Z	51.5	54	78.5	1	0.434
6209-2Z/YA7	51.5		78.5	1	0.433
6309-2Z-NY	54		91	1.5	0.851
6309-2Z	53		92	1.5	0.850
6309-Z	53	56.5	92	1.5	0.847
6309-2Z/YA7	53		92	1.5	0.831
6409-Z	58		107	2	1.57
6010-2Z	54.6		75.4	1	0.257
6010-Z	54.6		75.4	1	0.257
6210-2Z	56.5		83.5	1	0.484
6210-Z	56.5	58	83.5	1	0.479
6210-2Z/YA7	56.5		83.5	1	0.483
6310-2Z	59		101	2	1.134
6310-Z	59	63	101	2	1.12