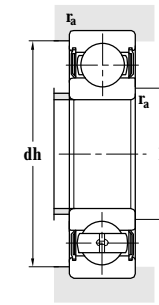
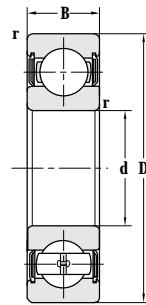
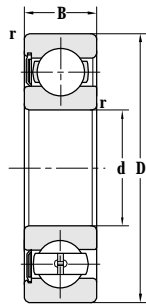


Deep Groove Ball Bearing(With Seals)

d 65-95 mm



Principal dimensions				Basic load ratings		Limit speed ratings
d	D	B	r <sub>min</sub>	C <sub>r</sub>	C <sub>or</sub>	Grease
mm				kN		r/min
<b>65</b>	140	33	2.1	95.0	59.5	3200
<b>70</b>	110	20	1.1	38.0	30.0	3600
	125	24	1.5	61.2	43.2	3400
	130	41	1.5	61.0	45.0	3200
	130	41	1.5	61.0	45.0	3200
	150	35	2.1	107	68.0	3000
	150	35	2.1	107	68.0	3000
	150	35	2.1	107	68.0	3000
<b>75</b>	115	20	1.1	40.0	32.2	3400
	115	20	1.1	40.0	32.2	3400
	130	25	1.5	66.0	50.0	3200
	130	25	1.5	66.0	50.0	4500
	130	25	1.5	61.0	46.0	3200
	130	25	1.5	61.0	46.0	3200
	160	37	2.1	113	71.0	2800
<b>80</b>	125	22	1.1	47.5	40.0	3200
	125	22	1.1	47.5	40.0	3200
	140	26	2	71.5	54.5	3000
	170	39	2.1	125	86.5	2600
	170	39	2.1	125	86.5	2600
<b>85</b>	130	22	1.1	47.5	40.0	3000
	150	28	2	84.0	62.0	2800
	180	41	3	102	96.5	2400
	180	41	3	102	96.5	2400
	180	41	3	133	96.5	2400
<b>90</b>	140	24	1.5	58.5	50.0	2800
	160	30	2	97.0	72.0	2600
	190	43	3	144	108	2400
<b>95</b>	145	24	1.5	60.5	54.0	2800
	170	32	2.1	110	80.0	2400

Designations	Abutment and fillet dimensions				Weight
	D <sub>smin</sub>	D <sub>smax</sub>	dh <sub>max</sub>	r <sub>amax</sub>	
	mm				kg
<b>6313-2RZ</b>	77		128	2	2.360
<b>6014-2RS</b>	76.5		103.5	1	0.623
<b>6214-2RS</b>	78		117	1.5	1.140
<b>180714</b>	78.5		121.5	1.5	2.050
<b>63214X3-2RS</b>	78.5		121.5	1.5	2.050
<b>6314-2RS</b>	81		139	2	2.600
<b>6314-RS</b>	81		139	2	2.620
<b>6314-2RZ</b>	82		138	2	2.600
<b>6015-2RS</b>	81		108.5	1	0.604
<b>6015-2RZ</b>	81		109	1	0.604
<b>6215-2RS</b>	83		122	1.5	1.230
<b>FL-6215-2RS/P6</b>	83		122	1.5	1.230
<b>6215-2RZ</b>	84		121	1.5	1.230
<b>6215-2RS/HAC3V2YA7</b>	84	88	121	1.5	1.180
<b>6315-2RS</b>	87		148	2	3.00
<b>6016-2RS</b>	86.5		118.5	1	0.856
<b>6016-2RZ</b>	86		119	1	0.856
<b>6216-2RS</b>	89		131	2	1.51
<b>6316-RS</b>	91		159	2	3.71
<b>6316-2RS</b>	91		159	2	3.75
<b>6017-2RS</b>	91.5		123.5	1	0.966
<b>6217-2RS</b>	94		141	2	1.81
<b>6317-RS</b>	98		167	2.5	4.32
<b>6317-2RS</b>	98		167	2.5	4.35
<b>6317-2RZ</b>	99		166	2.5	4.35
<b>6018-2RS</b>	98		132	1.5	1.180
<b>6218-2RS</b>	101		149	2	2.25
<b>6318-2RS</b>	104	114	176	2.5	5.10
<b>6019-2RS/C3</b>	102		138	1.5	1.17
<b>6219-2RS</b>	106		159	2	2.69