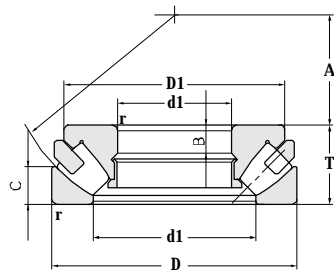
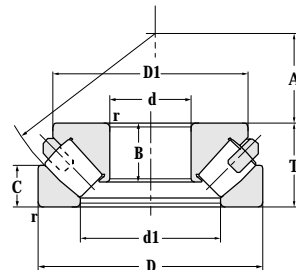


Thrust Spherical Roller Bearing(Asymmetrical)

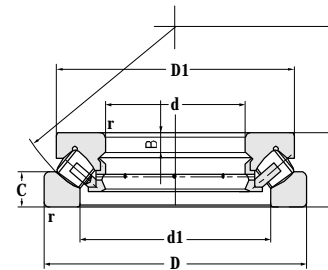
d 60-130 mm



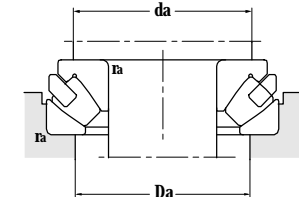
Basic structure



YA7 structure



YA8 structure



Principal dimensions				Basic load ratings		Limit speed ratings		Designations
d	D	T	r <sub>min</sub>	C <sub>r</sub>	C <sub>or</sub>	Grease	Oil	
mm				kN		r/min		
60	130	42	1.5	375	880	1800	2600	<b>29412</b>
	130	42	1.5	375	880	1800	2600	<b>29412J</b>
65	140	45	2	440	1040	1700	2400	<b>29413</b>
	140	45	2	440	1040	1700	2400	<b>29413J</b>
	140	45	2	440	1040	1700	2400	<b>29413J1</b>
70	150	48	2	500	1200	1600	2200	<b>29414</b>
75	160	51	2	580	1370	1600	2200	<b>29415</b>
80	170	54	2.1	640	1600	1400	2000	<b>29416</b>
	170	54	2.1	640	1600	1400	2000	<b>29416Q1</b>
	170	54	2.1	640	1570	1400	2000	<b>29416Q1/YA7</b>
85	150	39	1.5	365	1070	1600	2200	<b>29317</b>
90	155	39	1.5	385	1040	1600	2200	<b>29318</b>
	190	60	2.1	785	1980	1300	1800	<b>29418</b>
	190	60	2.1	785	1980	1300	1800	<b>29418Q1</b>
	190	60	2.1	785	1980	1300	1800	<b>29418Q1/HAYA7</b>
	190	60	2.1	785	1980	1300	1800	
100	170	42	1.5	450	1330	1500	2000	<b>29320</b>
110	190	48	2	590	1660	1200	1700	<b>29322</b>
	230	73	3	1130	2880	1100	1600	<b>29422</b>
120	210	54	2.1	545	2010	1100	1600	<b>29324</b>
	250	78	4	910	1590	1000	1500	<b>39424</b>
	250	156	5	980	2700	900	1300	<b>29424D/YA7</b>
130	225	58	2.1	830	2400	1000	1500	<b>29326</b>
	225	116	2.1	830	2400	1000	1500	<b>29326D</b>
	225	58	2.1	830	2400	1100	1600	<b>29326J</b>
	225	58	2.1	830	2400	1100	1600	<b>29326/YA7</b>
	225	58	2.1	830	2400	1000	1500	<b>29326/YA8</b>
	225	58	2.1	830	2400	1000	1500	

Other dimensions					Abutment and fillet dimensions			Weight
d1	D1	B	C	A	d <sub>amin</sub>	D <sub>amax</sub>	r <sub>amax</sub>	
mm					mm			
89	117.6	15	20	38	90	107	1.5	2.60
89	117	15	20	38	90	107	1.5	2.60
95	125	29.5	21	42	100	117	2	3.33
91	120	29.5	22	42	100	117	2	3.14
95	125	29.5	21.5	42	100	117	2	3.34
103	135	31	23	44	107	130	2	4.24
108	140	18	24	47	115	133	2	4.27
113	153.7	19	26.8	50	120	141	2	6.06
113	153.7	19	26.8	50	120	141	2	6.06
114	151	43	25.2	50	120	141	2	9.65
111	138	13	18.7	50	115	129	1.5	2.81
115.5	143.2	13	18.8	52	120	134	1.5	2.93
127	170	22	28.5	56	135	158	2	7.85
127	170	22	28.5	56	135	158	2	7.85
127	170	49.6	28.5	56	135	158	2	7.85
127.5	158.9	14	20.6	58	130	147	1.5	3.80
143	175	16	23	64	145	164	2	6.94
155.5	208	26	34.4	69	164	193	2.5	18.1
156	193.5	18	25.9	70	160	181	2	7.45
172	222	50.5	37	74	180	209	3	17.1
174	220	153	37	74	180	209	3	33.3
168	206.7	19	27.8	76	175	194	2	9.08
168	206.7	19	27.8	76	175	194	2	18.6
166	200	19	28	76	170	195	2	8.48
168	206.7	45	27.8	76	170	195	2	8.99
168	206.7	19	27.8	76	170	195	2	9.11