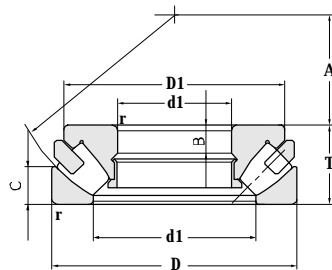
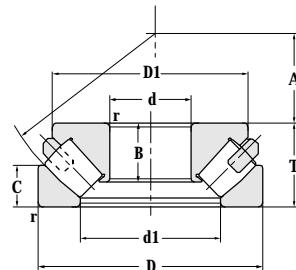


Thrust Spherical Roller Bearing(Asymmetrical)

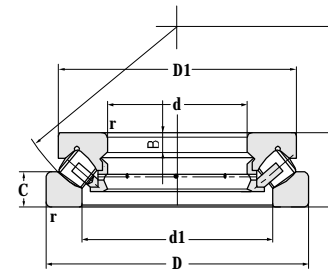
d 130~200 mm



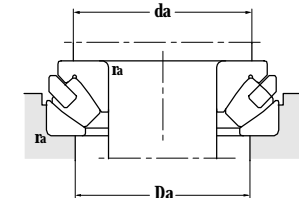
Basic structure



YA7 structure



YA8 structure



Principal dimensions				Basic load ratings		Limit speed ratings		Designations
d	D	T	r <sub>min</sub>	C <sub>r</sub>	C <sub>or</sub>	Grease	Oil	
mm				kN		r/min		
<b>130</b>	270	85	4	1500	3890	950	1400	<b>29426/YA7</b>
<b>140</b>	240	60	2.1	940	2600	950	1400	<b>29328</b>
<b>150</b>	250	60	2.1	960	2740	950	1400	<b>29330</b>
	250	60	2.1	960	2740	950	1400	<b>29330A</b>
	250	60	2.1	960	2740	950	1400	<b>29330J</b>
	250	60	2.1	960	2740	950	1400	<b>29330/YA8</b>
	300	90	4	1790	4900	800	1100	<b>29430/YA8</b>
<b>160</b>	270	67	3	1130	3330	850	1200	<b>29332</b>
	270	67	3	1130	3330	850	1200	<b>29332F3</b>
	320	95	5	2000	5330	700	1000	<b>29432</b>
<b>170</b>	280	67	3	1150	3410	850	1200	<b>29334</b>
	280	67	3	1150	3680	850	1200	<b>29334J</b>
	340	103	5	2270	6350	700	950	<b>29434/YA7</b>
<b>180</b>	250	42	1.5	475	1960	900	1300	<b>29236</b>
	300	73	3	1370	4130	700	1000	<b>29336</b>
	300	73	3	1370	4130	700	1000	<b>29336/YA8</b>
	360	109	5	2500	7060	700	950	<b>29436</b>
	360	109	5	2500	7200	700	950	<b>29436/YA7</b>
	360	109	5	2500	7060	700	950	<b>29436/YA8</b>
	<b>190</b>	270	48	2	620	2660	-	1400
270		48	2	620	2660	-	1400	<b>29238F3</b>
320		78	4	1565	4950	750	1000	<b>29338</b>
320		78	4	1565	5300	750	1000	<b>29338/YA8</b>
380		115	5	2740	7680	630	850	<b>29438</b>
<b>200</b>	280	48	2	630	2590	-	1400	<b>29240</b>
	340	85	4	1790	5280	700	950	<b>29340</b>
	340	85	4	1790	5280	700	950	<b>29340J</b>
	340	85	4	1790	5280	700	950	<b>29340/YA8</b>

Other dimensions					Abutment and fillet dimensions			Weight
d1	D1	B	C	A	d <sub>amin</sub>	D <sub>amax</sub>	r <sub>amax</sub>	
mm					mm			
183	246	67.5	39.7	81	142.5	227	3	28.3
183	221	20	28	82	185	208	2	10.1
194	240	20	29	87	195	235	2	11.5
190	215	34.6	29	87	190	210	2	10.5
190	225.5	38	29	87	195	219	2	10.9
194	240	20	29	87	195	219	2	11.5
209.5	273	32	42.1	92	220	253	3	28.6
205	249.6	23	31.7	92	210	235	2.5	14.6
205	249.6	23	31.7	92	210	235	2.5	14.5
218.5	285	34	46.9	99	235	270	4	32.8
216	260.3	23	31.7	96	220	245	2.5	15.7
215	252.5	42.2	32	96	220	245	2.5	14.8
234	310	79	48.8	103	250	286	4	42.8
209	239	15	21.3	97	215	227	1.5	7.05
229	275	25	34.4	103	235	262	2.5	19.9
229	275	25	34.4	103	235	262	2.5	20.3
249.5	326	39	51.2	110	265	304	4	64.2
249.5	326	84	51.2	110	265	304	4	49.8
249.5	326	39	51.2	5	265	304	4	62.5
222.5	257	15.5	24.1	104	225	243	2	8.44
222.5	257	15.5	24.1	104	225	243	2	8.37
240.5	298.3	27	38.6	110	250	280	3	25.1
240.5	308	27	38.6	110	250	280	3	25.7
263	345	41	53.7	117	280	321	4	59.0
234.5	266	15	24	108	240	254	2	8.54
259	314	29	39.1	116	265	297	3	29.5
261	318	54.5	41	116	265	297	3	29.3
261	325	29	41	116	265	297	3	34.0