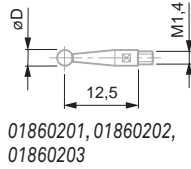




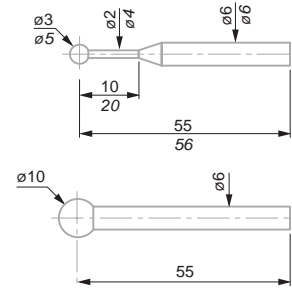
Packed suitable for transport

## INSERTS WITH Ø 6 MM MOUNTING SHAFT, FOR FMS PROBES

### Inserts with Ball Tip, Ø 6 mm Mounting Shaft, for FMS Probes



No	Ø	Material	L, mm
00760058	3	Carbide	55
00760059	5	Carbide	56
00760060	10	Carbide	55
01860201	1	Carbide	12,53
01860202	2	Carbide	12,53
01860203	3	Carbide	12,53
01860307	Wrench	-	-



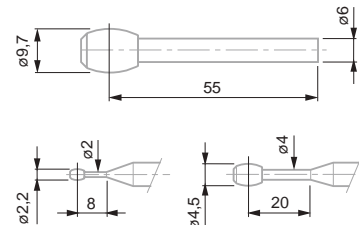
00760058, 00760059, 00760060



Packed suitable for transport

### Barrel Shaped Inserts for Bores, Ø 6 mm Mounting Shaft, for FMS Probes

No	Ø	Material	Thread
00760066	2,2	Carbide	M3 to M16
00760067	4,5	Carbide	M6 to M48
00760068	9,7	Carbide	M12 to M150



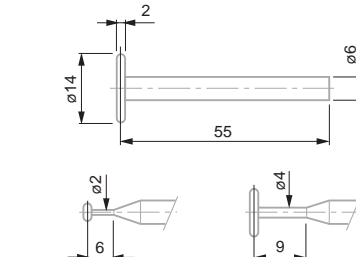
00760066, 00760067, 00760068



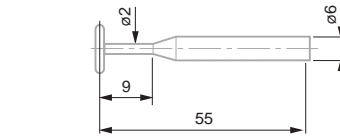
Packed suitable for transport

### Disc Inserts for Grooves, Ø 6 mm Mounting Shaft, for FMS Probe

No	Ø	Material	Disc thickness, mm
00760074	4,5	Carbide	1
00760075	14	Carbide	2
00760076	19	Carbide	3



00760075



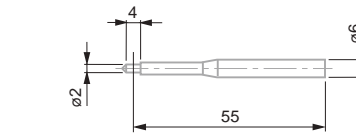
00760074



Transport packaging

### Special Inserts, Ø 6 mm Mounting Shaft, for FMS Probes

No	Ø	Material	L, mm
00760082	2	Carbide	55



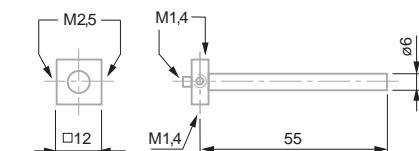
00760082



Packed suitable for transport

### Universal Probe Holder with Ø 6 mm Mounting Shaft, for FMS Probes

No	Thread	L, mm
00760096	M1,4 and M2,5 threads	55



00760096

