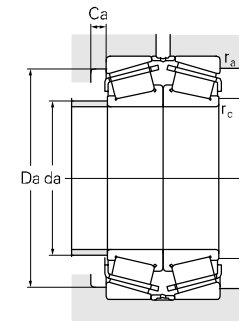
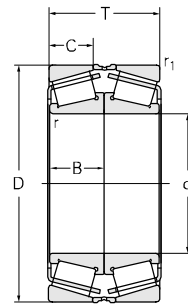
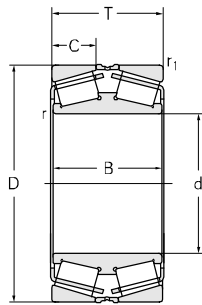


Double-row Tapered Roller Bearing(Metric DF)

d 130~190 mm



Principal dimensions							Basic load ratings		Limit speed ratings	
d	D	T	B	C	r _{min}	r _{1min}	C _r	C _{Or}	Grease	Oil
mm							kN		r/min	
130	200	90	90	34	0.6	2	600	1210	1300	1800
	230	135.5	135.5	54	1	3	933	1650	1100	1500
	280	144	132	44	1.3	4	1100	1680	1100	1500
140	210	90	90	34	0.6	2	550	1120	1200	1700
	240	100	100	40	1.5	3	950	1450	1000	1300
	270	120	120	41	3	3	1100	1600	970	1200
	300	154	70	47	1.3	4	1210	1842	900	1300
	300	154	70	47	1.3	4	1200	1840	850	1200
150	210	76	38	30	0.5	2	455	920	1200	1500
	225	96	96	36	0.6	2.5	625	1270	1200	1500
	225	97	90	38	1.1	2.5	450	930	1200	1500
	270	154	146	60	1	3	1210	2450	900	1300
160	240	102	102	38	0.8	2.5	722	1450	1000	1500
	240	102	102	41	0.9	2.5	722	1420	1000	1500
	240	102	102	41	0.9	2.5	722	1420	1000	1500
	240	76	76	29	1.5	3	485	910	1100	1400
	290	168	160	67	1	3	1480	2970	900	1300
	343	160	160	53.975	3.3	3.3	1520	2290	740	950
	290	168	160	67	1	3	1480	2970	900	1300
170	230	76	38	30	0.6	2	480	1120	1000	1400
	230	76	38	30	0.6	2	485	1120	1000	1400
	230	65	65	27	0.7	2	450	945	1000	1400
	260	114	114	43	1.3	2.5	890	1740	850	1400
	295	100	100	35	2.5	4	860	1360	950	1300
	310	182	172	71	1.3	4	1685	3250	850	1200
180	250	90	90	34	0.6	2	590	1430	950	1400
	250	90	90	36	0.7	2	500	1060	950	1400
	280	128	128	48	1	2.5	1080	2170	900	1300
	330	190	190	76	1.5	5	1800	3700	820	1040
	280	128	128	48	1	2.5	1080	2170	900	1300
190	290	128	128	48	1	2.5	1090	2280	850	1200

Designations	Calculation coefficient				Weight kg
	e	Y1	Y2	Yo	
32026/DF	0.43	1.55	2.31	1.52	10.5
32226/DF	0.44	1.53	2.28	1.5	23.7
31326/DF	0.55	0.82	1.22	0.8	40.9
32028/DF	0.46	1.47	2.18	1.43	11.8
370628X3/GW/HCYB2	0.39	1.74	2.59	1.7	18.8
370628D/HCYA3/W283	0.7	0.97	1.44	0.94	29.5
31328/DF	0.83	0.818	1.22	0.8	50.3
31328/DFC235	0.83	0.81	1.2	0.8	50.3
32930/DF	0.33	2.06	3.06	2.01	7.99
32030/DF	0.46	1.47	2.18	1.43	12.9
32030X2A/DF	0.37	1.83	2.72	1.79	14.1
32230/C3DF	0.44	1.55	2.31	1.52	38.4
32032/DFC425	0.46	1.47	2.19	1.44	15.8
32032X1A/DF	0.37	1.83	2.72	1.79	15.7
32032X2A/DFC150	0.37	1.83	2.72	1.79	15.7
370632	0.47	1.43	2.12	1.4	11.4
32232/DF	0.44	1.55	2.31	1.52	48.1
370632D/HC/W281	0.81	0.83	1.23	0.81	65.3
32934/P6DF-XD	0.38	1.76	2.62	1.72	9.31
32934/P59DF	0.38	1.76	2.62	1.72	9.31
370634	0.29	2.36	3.51	2.31	6.79
32034/DF	0.44	1.52	2.26	1.49	21.9
370634-1/C9	0.87	0.78	1.16	0.76	27.8
370634-1D	0.87	0.78	1.16	0.76	26.7
32234/HCDF	0.44	1.55	2.31	1.52	61.9
32936/DF	0.48	1.4	2.1	1.4	13.5
32936X2A-1/DF	0.48	1.4	2.1	1.4	12.7
32036/DFC425	0.42	1.6	2.38	1.56	28.9
370636D/HCYA3	0.58	1.16	1.72	1.13	71.6
32038/DFC395	0.44	1.53	2.27	1.49	30.1