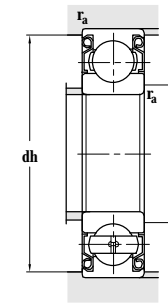
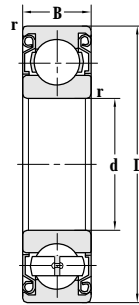
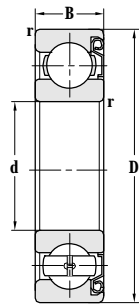


Deep Groove Ball Bearing(With Shields)

d 65-85 mm



Principal dimensions				Basic load ratings		Limit speed ratings	
d	D	B	r _{min}	C _r	C _{or}	Grease	Oil
mm				kN		r/min	
65	140	33	2.1	92.5	59.5	5000	6000
70	110	20	1.1	38.0	30.0	6000	7000
	125	24	1.5	61.2	43.2	5000	6000
	125	24	1.5	61.2	43.2	5000	6000
	125	24	1.5	61.2	43.2	5000	6000
	127	28.4	1.5	56.0	46.5	5000	6000
	150	35	2.1	107	68.0	4500	5300
	150	35	2.1	107	68.0	4500	5300
	150	35	2.1	107	68.0	4500	5300
75	105	16	1	26.5	23.5	6000	7000
	115	20	1.1	38.0	31.0	5600	6700
	115	20	1.1	38.0	31.0	5600	6700
	130	25	1.5	66.0	50.0	4800	5600
	130	25	1.5	66.0	50.0	4800	5600
	130	25	1.5	66.0	50.0	4800	5600
	130	25	1.5	66.0	50.0	4800	5600
	130	25	1.5	66.0	50.0	4800	5600
	160	37	2.1	113	77	4300	5000
	160	37	2.1	113	77	4300	5000
	160	37	2.1	113	77	4300	5000
	80	110	16	1	27.6	25.3	5600
125		22	1.1	47.5	40.0	5300	6300
125		22	1.1	47.5	40.0	5300	6300
140		26	2	71.5	54.5	4500	5300
140		26	2	71.5	54.5	4500	5300
140		26	2	71.5	54.5	4500	5300
140		26	2	71.5	54.5	4500	5300
170		39	2.1	125	86.5	3800	4500
170		39	2.1	125	86.5	3800	4500
170		39	2.1	125	86.5	3800	4500
85	120	18	1.1	31.0	29.0	5000	6000

Designations	Abutment and fillet dimensions				Weight
	D _{smin}	D _{smax}	dh _{max}	r _{amax}	
	mm				kg
6313-Z	76		129	2	2.12
6014-2Z	76		104	1	0.625
6214-2Z/YA7	78	83	117	1.5	1.11
6214-Z	78		117	1.5	1.13
6214-Z	78		117	1.5	1.13
6214-ZSC	78		117	1.5	1.29
6314-2Z	81		139	2	2.62
6314-2Z/P6CMV2	81		139	2	2.51
6314-2Z/YA7	81	87	139	2	2.59
6314-Z	81		139	2	2.59
61915-2Z	79.6		100	1	0.357
6015-2Z	81.5		108.5	1	0.624
6015-Z	81.5		108.5	1	0.658
6215-2Z	83		122	1.5	1.21
6215-Z	83		122	1.5	1.21
6215-Z/HQ1	83		122	1.5	1.22
6215-2Z/YA7	83	87	122	1.5	1.19
6215F2-2Z/C9S2	83		122	1.5	1.16
6315-2Z	86		149	2	3.11
6315-Z	86		149	2	3.03
6315-2Z/YA7	86	94	149	2	3.12
61916-2Z	84.6		105	1	0.357
6016-Z	86.5		118.5	1	0.860
6016-2Z	86.5		118.5	1	0.875
6216-2Z/YA7	89	94	131	2	1.45
6216-2Z	89		131	2	1.50
FL-6216-2Z	89		131	2	1.50
6216-Z	89		131	2	1.47
6316-Z	91		159	2	3.36
6316-2Z	91		159	2	3.72
6316-2Z/YA7	91	100	159	2	3.69
61917	92		113	1	0.557