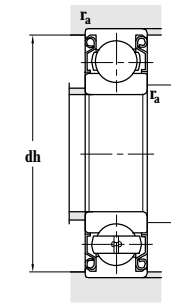
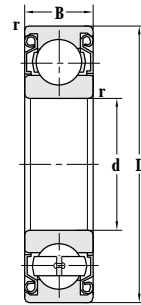
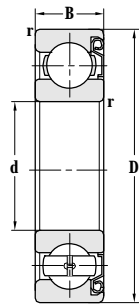


Deep Groove Ball Bearing(With Shields)

d 50-65 mm



Principal dimensions				Basic load ratings		Limit speed ratings		
d	D	B	r _{min}	C _r	C _{or}	Grease	Oil	
mm				kN		r/min		
50	110	27	2	62.0	38.0	6300	7500	
	130	31	2.1	88.0	52.0	5300	6300	
55	90	18	1.1	29.0	20.7	7500	9000	
	90	18	1.1	29.0	20.7	7500	9000	
	100	21	1.5	44.3	27.8	7500	9000	
	100	21	1.5	44.3	27.8	7500	9000	
	100	21	1.5	44.3	27.8	7500	9000	
	100	21	1.5	44.3	27.8	7500	9000	
	120	29	2	71.5	45.0	5600	6700	
	120	29	2	71.5	45.0	5600	6700	
	120	29	2	71.5	45.0	5600	6700	
	120	29	2	71.5	45.0	5600	6700	
	140	33	2.1	95.0	60.0	5000	6000	
	140	33	2.1	95.0	60.0	5000	6000	
	60	85	13	1	17.0	15.1	7500	9000
		95	18	1.1	30.0	23.0	6700	8000
110		22	1.5	53.0	36.0	6000	7000	
110		22	1.5	53.0	36.0	6000	7000	
110		22	1.5	53.0	36.0	6000	7000	
130		31	2.1	82.0	50.0	5000	6000	
130		31	2.1	82.0	50.0	5000	6000	
130		31	2.1	82.0	50.0	5000	6000	
150		35	2.1	107	68.5	4800	5600	
150		35	2.1	107	68.5	4800	5600	
65		100	18	1.1	32.0	25.0	6300	7500
	120	23	1.5	57.0	40.0	5300	6300	
	120	23	1.5	57.0	40.0	5300	6300	
	120	23	1.5	57.0	40.0	5300	6300	
	120	23	1.5	57.0	40.0	5300	6300	
	120	23	1.5	57.0	40.0	5300	6300	
	120	23	1.5	57.0	40.0	5300	6300	
	120	23	1.5	57.0	40.5	5300	6300	
	140	33	2.1	92.5	59.5	5000	6000	
	140	33	2.1	92.5	59.5	5000	6000	

Designations	Abutment and fillet dimensions				Weight
	D _{smin}	D _{smax}	dh _{max}	r _{amax}	
	mm				kg
6310-2Z/YA7	59		101	2	1.11
6410-2Z	64		116	2	1.92
6011-Z	61		84	1	0.388
6011-2Z	61		84	1	0.386
6211-Z	63	65	92	1.5	0.621
6211-2Z	63		92	1.5	0.639
6211-2Z/YA7	63		92	1.5	0.631
6211F2-2Z/C9S2	63		92	1.5	0.631
6311-2Z	64		111	2	1.38
6311-Z	64	69	111	2	1.38
6311-2Z/YA7	64		111	2	1.36
6311-2RZ	64		111	2	1.37
6411-Z	69		126	2	2.32
6411-2Z	69		126	2	2.28
61912-2Z	64.6		80.4	1	0.198
6012-2Z	66		89	1	0.417
6212-Z	68	71	102	1.5	0.794
6212-2Z	68		102	1.5	0.800
6212-2Z/YA7	68		102	1.5	0.792
6312-2Z	71	76	119	2	1.71
6312-2Z/YA7	71		119	2	1.67
6312-Z	71		119	2	1.75
6412-Z	74		136	2	2.77
6412-2Z	74		136	2	2.75
6013-2Z	71.5		93.5	1	0.459
6213-2Z	73		112	1.5	1.06
FL-6213-2Z	73		112	1.5	1.06
6213-Z	73		112	1.5	0.690
6213-Z/HQ1	73		112	1.5	1.05
6213-2Z/YA7	73	79	112	1.5	0.679
6213F2-2Z/C9S2	73		112	1.5	1.06
6313-2Z/YA7	76	81	129	2	2.19
6313-2Z	76		129	2	2.12