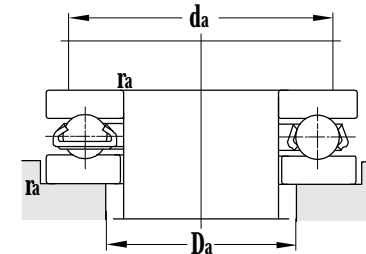
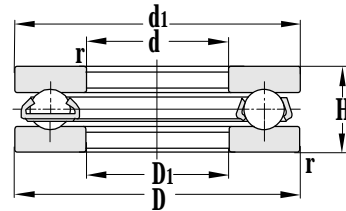
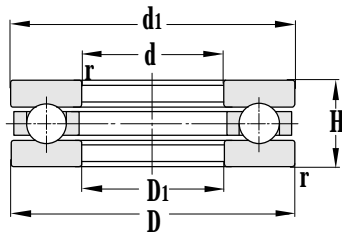


Thrust Ball Bearing

d 80~110 mm



Principal dimensions				Basic load ratings		Limit speed ratings		Designations
d	D	H	r <sub>min</sub>	C <sub>r</sub>	C <sub>or</sub>	Grease	Oil	
mm				kN		r/min		
<b>80</b>	140	44	1.5	181	425	1200	1700	<b>51316</b>
	140	44	1.5	173	395	1200	1700	<b>51316M</b>
	170	68	1.1	315	655	1000	1400	<b>51416M</b>
<b>85</b>	110	19	1	49.5	160	1900	2800	<b>51117</b>
	125	31	1	111	270	1600	2200	<b>51217</b>
	150	49	1.5	223	475	1100	1600	<b>51317</b>
	150	49	1.5	223	475	1100	1600	<b>51317M</b>
	180	72	1.1	335	735	950	1200	<b>51417M</b>
	180	72	1.1	335	735	950	1200	<b>51417</b>
<b>90</b>	120	22	1	65.0	205	1800	2600	<b>51118</b>
	120	22	1	65.0	205	3000	4000	<b>51118M/P4</b>
	135	35	1.1	132	320	1500	2000	<b>51218</b>
	155	50	1.5	232	520	1000	1500	<b>51318</b>
	155	50	1.5	232	520	1000	1500	<b>51318M</b>
	190	77	2.1	380	800	900	1100	<b>51418M</b>
<b>100</b>	135	25	1	83.5	285	1700	2400	<b>51120</b>
	135	25	1	83.5	285	1700	2400	<b>51120M</b>
	150	38	1.1	125	350	1300	1800	<b>51220</b>
	150	38	1.1	125	350	1300	1800	<b>51220M</b>
	170	55	1.5	276	705	950	1400	<b>51320</b>
	170	55	1.5	276	705	950	1400	<b>51320M</b>
	172	57	1.8	276	705	900	1300	<b>51720</b>
	210	85	3	420	1130	850	1000	<b>51420</b>
	210	85	3	420	1040	850	1000	<b>51420M</b>
	<b>100.2</b>	150	38	1.1	163	430	1600	1800
<b>110</b>	145	25	1	85.5	310	1650	2300	<b>51122</b>
	145	25	1	85.5	310	1650	2300	<b>51122M</b>
	160	38	1.1	131	395	1200	1700	<b>51222</b>
	160	38	1.1	131	395	1200	1700	<b>51222M</b>
	190	63	2	305	800	850	1200	<b>51322M</b>
	190	63	2	305	800	850	1200	<b>51322</b>

Other dimensions		Abutment and fillet dimensions			Weight
d1	D1	d <sub>amin</sub>	D <sub>amax</sub>	r <sub>amax</sub>	
mm		mm			kg
140	82	116	104	1.5	2.63
140	82	116	104	1.5	2.92
170	83	133	117	2	7.89
110	87	100	95	1	0.419
125	88	109	101	1	1.21
150	88	124	111	1.5	3.49
150	88	124	111	1.5	3.97
177	88	141	124	2	8.60
177	88	141	124	2	8.35
120	92	108	102	1	0.632
120	92	108	102	1	0.721
135	93	117	108	1	1.67
155	93	129	116	1.5	4.02
155	93	129	116	1.5	4.44
187	93	149	131	2	9.91
135	102	121	114	1	0.937
135	102	121	114	1	0.937
150	103	130	120	1	2.12
150	103	130	120	1	2.33
170	103	142	128	1.5	4.85
170	103	142	128	1.5	5.42
172	100.2	143	129	1.8	5.36
205	103	165	145	2.5	13.6
205	103	165	145	2.5	13.5
150	100.2	130	120	1	2.20
145	112	131	124	1	1.12
145	112	131	124	1	1.21
160	113	140	130	1	2.43
160	113	140	130	1	2.67
187	113	158	142	2	7.36
187	113	158	142	2	7.08