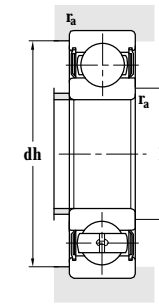
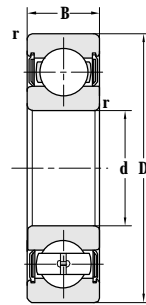
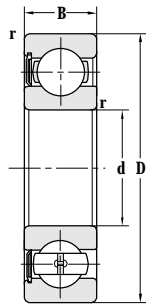


Deep Groove Ball Bearing (With Seals)



d 65-95 mm



Principal dimensions				Basic load ratings		Limit speed ratings
d	D	B	r _{min}	C _r	C _{or}	Grease
mm				kN		r/min
65	140	33	2.1	95.0	59.5	3200
70	110	20	1.1	38.0	30.0	3600
	125	24	1.5	61.2	43.2	3400
	130	41	1.5	61.0	45.0	3200
	130	41	1.5	61.0	45.0	3200
	150	35	2.1	107	68.0	3000
	150	35	2.1	107	68.0	3000
	150	35	2.1	107	68.0	3000
75	115	20	1.1	40.0	32.2	3400
	115	20	1.1	40.0	32.2	3400
	130	25	1.5	66.0	50.0	3200
	130	25	1.5	66.0	50.0	4500
	130	25	1.5	61.0	46.0	3200
	130	25	1.5	61.0	46.0	3200
	160	37	2.1	113	71.0	2800
80	125	22	1.1	47.5	40.0	3200
	125	22	1.1	47.5	40.0	3200
	140	26	2	71.5	54.5	3000
	170	39	2.1	125	86.5	2600
	170	39	2.1	125	86.5	2600
85	130	22	1.1	47.5	40.0	3000
	150	28	2	84.0	62.0	2800
	180	41	3	102	96.5	2400
	180	41	3	102	96.5	2400
	180	41	3	133	96.5	2400
90	140	24	1.5	58.5	50.0	2800
	160	30	2	97.0	72.0	2600
	190	43	3	144	108	2400
95	145	24	1.5	60.5	54.0	2800
	170	32	2.1	110	80.0	2400

Designations	Abutment and fillet dimensions				Weight
	D _{smin}	D _{smax}	dh _{max}	r _{amax}	
	mm				kg
6313-2RZ	77		128	2	2.360
6014-2RS	76.5		103.5	1	0.623
6214-2RS	78		117	1.5	1.140
180714	78.5		121.5	1.5	2.050
63214X3-2RS	78.5		121.5	1.5	2.050
6314-2RS	81		139	2	2.600
6314-RS	81		139	2	2.620
6314-2RZ	82		138	2	2.600
6015-2RS	81		108.5	1	0.604
6015-2RZ	81		109	1	0.604
6215-2RS	83		122	1.5	1.230
FL-6215-2RS/P6	83		122	1.5	1.230
6215-2RZ	84		121	1.5	1.230
6215-2RS/HAC3V2YA7	84	88	121	1.5	1.180
6315-2RS	87		148	2	3.00
6016-2RS	86.5		118.5	1	0.856
6016-2RZ	86		119	1	0.856
6216-2RS	89		131	2	1.51
6316-RS	91		159	2	3.71
6316-2RS	91		159	2	3.75
6017-2RS	91.5		123.5	1	0.966
6217-2RS	94		141	2	1.81
6317-RS	98		167	2.5	4.32
6317-2RS	98		167	2.5	4.35
6317-2RZ	99		166	2.5	4.35
6018-2RS	98		132	1.5	1.180
6218-2RS	101		149	2	2.25
6318-2RS	104	114	176	2.5	5.10
6019-2RS/C3	102		138	1.5	1.17
6219-2RS	106		159	2	2.69