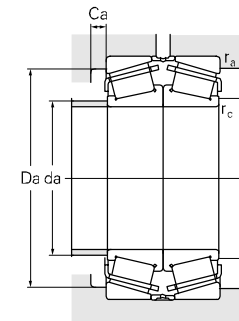
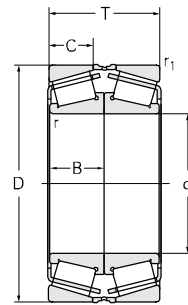
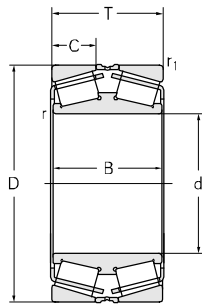


Double-row Tapered Roller Bearing(Metric DF)

d 55-120 mm



Principal dimensions							Basic load ratings		Limit speed ratings	
d	D	T	B	C	r _{min}	r _{1min}	C _r	C _{Or}	Grease	Oil
mm							kN		r/min	
55	90	54	27	21	0.5	1.5	174	292	3300	4400
60	130	67	67	22	1	2.5	261	350	1900	2800
70	110	55.5	55.5	19	0.5	1.5	178	324	2300	3000
75	130	55	50	22	0.5	1.5	214	350	2000	2600
	130	51.5	50	22	2	2.3	265	400	2000	2600
	130	54.5	50	22	2	2.3	265	400	2000	2600
	130	54.5	50	22	2	2.3	308	400	2000	2600
80	140	56.5	26	22	0.7	2	280	410	2100	2800
	140	56.75	52	22	0.7	2	228	356	2100	2800
	125	58	58	22	0.5	1.5	238	430	2100	2600
	110	50	20	50	0.5	1	132	240	2200	2800
	140	56.75	52	22	1	3	310	470	2100	2800
	140	56.75	52	22	1	3	310	470	2100	2800
140	56.75	52	22	1	3	310	470	2100	2800	
85	130	72	72	29.5	0.6	1.5	309	610	2000	2500
90	190	93	86	30	1	3	530	760	1400	1900
	140	78	78	32.5	0.3	1.5	381	735	1800	2300
100	180	74	68	29	0.8	2.5	450	710	1500	1900
	180	74	68	29	0.8	2.5	450	710	1500	1900
	180	74	68	29	0.8	2.5	450	710	1500	1900
	150	66	66	27	2*30*	1.5	294	560	1800	2300
110	220	76	76	38	0.8	2.5	395	615	1500	2000
	200	112	112	46	0.8	2.5	700	1350	1400	1700
	170	94	94	37	0.5	2	470	930	1300	1800
	170	66	70	27	1.5	2	350	690	1300	1800
120	215	87	80	34	0.8	2.5	570	890	1400	1900
	260	136	136	42	1	3	916	1380	950	1400

Designations	Calculation coefficient				Weight kg
	e	Y1	Y2	Yo	
33011/DF	0.31	2.16	3.22	2.12	1.73
31312/C9DF	0.83	0.81	1.2	0.8	4.05
32014/P5DFYA8	0.43	1.55	2.31	1.52	2.18
30215/DFP69YB2	0.44	1.55	2.31	1.52	3
370215/C9YAB-QC	0.44	1.55	2.31	1.52	2.95
370215/C91YAB-QC	0.44	1.55	2.31	1.52	2.95
370215/P6XC9YAB	0.44	1.55	2.31	1.52	2.95
30216/DF-1	0.42	1.61	2.39	1.57	3.28
30216/DF	0.42	1.61	2.39	1.57	3.28
32016/DF	0.42	1.6	2.38	1.56	2.61
32916/P5DF	0.35	1.92	2.86	1.88	1.28
370216/C9YAB-QC	0.42	1.61	2.39	1.57	3.71
370216/P6XYAB	0.42	1.61	2.39	1.57	3.71
370216/YAB-QC	0.42	1.61	2.39	1.57	3.71
33017/C9DF	0.29	2.32	3.45	2.26	3.49
31318/DF	0.83	0.82	1.22	0.8	11.7
33018/C9DF	0.27	2.51	3.74	2.45	4.58
370220/C9YAB-QC	0.42	1.61	2.39	1.57	7.89
370220/P6XYAB	0.42	1.61	2.39	1.57	7.89
370220/YAB-QC	0.42	1.61	2.39	1.57	7.89
370620/YAD	0.32	2.04	3.03	1.99	4.04
30622/DF	0.42	1.61	2.39	1.57	10.3
32222/DF	0.42	1.61	2.39	1.57	15.1
33022/C9DF	0.29	2.35	3.5	2.3	7.79
370622	0.32	2.11	3.14	2.06	5.66
30224/DF	0.44	1.55	2.31	1.52	13.4
31324/DF	0.83	0.81	1.2	0.8	33.5