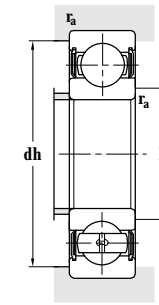
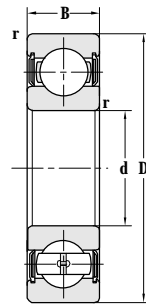
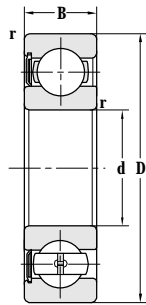


Deep Groove Ball Bearing(With Seals)



d 50-65 mm



Principal dimensions				Basic load ratings		Limit speed ratings	
d	D	B	r <sub>min</sub>	C <sub>r</sub>	C <sub>or</sub>	Grease	
mm				kN		r/min	
<b>50</b>	110	27	2	62.0	38.0	4800	
	110	27	2	62.0	38.0	4800	
	110	27	2	62.0	38.0	4800	
	163	46	2	57.5	35.0	4600	
<b>55</b>	90	18	1.1	29.0	20.7	4500	
	100	21	1.5	44.3	27.8	4300	
	120	29	2	71.5	45.0	3800	
	120	29	2	71.5	45.0	3800	
	120	49.2	2	71.5	45.0	3800	
	120	49.2	2	67.0	42.0	3800	
	140	33	2.1	89	54	3600	
<b>60</b>	95	18	1.1	30.0	23.0	4300	
	95	18	1.1	30.0	23.0	4300	
	95	18	1.1	30.0	23.0	4300	
	95	18	1.1	30.0	23.0	4300	
	95	18	1.1	30.0	23.0	4300	
	110	22	1.5	53.0	36.0	4000	
	110	22	1.5	53.0	36.0	4000	
	110	22	1.5	53.0	36.0	4000	
	110	22	1.5	53.0	36.0	4000	
	110	22	1.5	53.0	36.0	4000	
	110	22	1.5	53.0	36.0	4000	
	110	22	1.5	53.0	36.0	5500	
	130	31	2.1	82.0	48.5	3400	
	130	31	2.1	82.0	48.5	3400	
	130	31	2.1	77.0	49.0	5200	
	<b>65</b>	85	10	0.6	11.9	11.5	6300
		90	13	1.1	16.0	15.0	7800
100		18	1.1	32.0	25.0	4000	
120		23	1.5	57.0	40.0	3500	
120		23	1.5	57.0	40.0	3500	
140		33	2.1	95.0	59.5	3200	
140		33	2.1	95.0	59.5	3200	
140		33	2.1	95.0	59.5	3200	

Designations	Abutment and fillet dimensions				Weight
	D <sub>smin</sub>	D <sub>smax</sub>	dh <sub>max</sub>	r <sub>amax</sub>	
	mm				kg
<b>6310-2RS</b>	59	63	101	2	0.926
<b>6310-2RS/HAC3V2YA7</b>	59	63	101	2	1.07
<b>6310TN1-2RZ/C4L</b>	59	63	101	2	1.08
<b>6310X3-2RS</b>	67.5	96	2	4100	5.84
<b>6011-2RS</b>	61		84	1	0.389
<b>6211-2RS</b>	63		92	1.5	0.653
<b>6311-2RS</b>	64		111	2	1.370
<b>6311-RS</b>	64		111	2	1.380
<b>63311TN1-2RZ/C3H</b>	64		111	2	2.190
<b>63311-2RZ/C3L</b>	66		109	2	2.270
<b>6411-2RS/YA5</b>	66		129	2	2.450
<b>6012-2RS</b>	66.5		88.5	1	0.446
<b>6012-RS</b>	66.5		88.5	1	0.430
<b>FL-6012-2RS</b>	66.5		88.5	1	0.446
<b>FL-6012/C3</b>	66.5		88.5	1	0.416
<b>FL-6012/P6</b>	66.5		88.5	1	0.416
<b>6212-2RS</b>	68		102	1.5	0.780
<b>6212-2RS/HAC3V2YA7</b>	68		102	1.5	0.788
<b>6212WB-2RS/P53</b>	68		102	1.5	0.974
<b>6212/HAC3YAB-2RSZ</b>	68		102	1.5	0.928
<b>6212-2RS2/HAYA57</b>	68		102	1.5	0.792
<b>6212-2RS2</b>	69		101	1.5	0.780
<b>FL-6212-2RS/P6</b>	69		101	1.5	0.800
<b>6312-2RS</b>	71		119	2	1.750
<b>6312-RS</b>	71		119	2	1.760
<b>6312-2RZ</b>	71		119	2.1	1.750
<b>FL-61813-2RS/P6</b>	69		81	0.6	0.129
<b>FL-61913-2RS/P5</b>	71.5		83.5	1	0.212
<b>6013-2RS</b>	71		94	1	0.444
<b>6213-2RS</b>	73		112	1.5	1.070
<b>6213-2RSR/C3Z1YA6</b>	73		112	1.5	1.140
<b>6313-2RS</b>	76		129	2	2.360
<b>6313-RS</b>	76		129	2	2.250