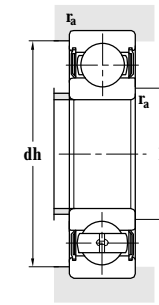
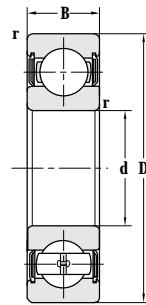
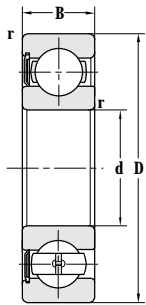


Deep Groove Ball Bearing(With Seals)

d 95-150 mm



Principal dimensions				Basic load ratings		Limit speed ratings
d	D	B	r _{min}	C _r	C _{or}	Grease
mm				kN		r/min
95	200	45	3	152	118	2400
	200	45	3	152	118	2400
100	150	24	1.5	62.4	52.9	2600
	180	34	2.1	122	93.0	2400
	180	34	2.1	115	88.0	2400
	215	47	3	173	141	2800
105	160	26	2	73.0	62.8	2400
	190	36	2.1	135	102	3200
	225	49	3	240	154	2800
110	140	16	1	26.7	28.2	2600
	170	28	2	82.0	70.6	2400
	200	38	2.1	145	114	3000
	240	50	3	195	167	2600
120	165	22	1.1	48.6	50.5	3900
	180	28	2	85.5	80.0	2200
	215	40	2.1	154	130	2100
	215	40	2.1	155	132	2800
	215	40	2.1	154	130	2800
	260	55	3	217	196	2000
130	165	18	1.1	33	37.7	3800
	200	33	2	109	98	3200
	230	40	3	153	134	2600
	230	40	3	153	134	2600
140	250	42	3	166	150	2400
	250	42	3	166	150	2400
150	225	35	2.1	123	117	1600
	270	45	3	189	183	2000

Designations	Abutment and fillet dimensions				Weight
	D _{smin}	D _{smax}	dh _{max}	r _{amax}	
	mm				kg
6319-RS	108		187	2.5	5.68
6319-2RS	108		187	2.5	5.92
6020-2RS	108		142	1.5	1.210
6220-2RS	111		169	2	3.270
6220-2RS/CRA9	111		169	2	3.370
6320-2RS	113		202	2.5	7.19
6021-2RS	114		151	2	1.670
6221-2RS	117		178	2	3.870
6321-2RS	119		211	2.5	8.150
61822-2RS2/S3YA7	115		135	1	0.517
6022-2RS	119		161	2	1.98
6222-2RS	122		188	2	4.620
6322-2RS	124		226	2.5	9.770
FL-61924-2RS/P5	126		129	1	1.200
6024-2RS	129		171	2	2.240
6224-2RZ	132		203	2	5.330
6224-2RS/YB2	132		203	2	5.430
6224-2RS	132		203	2	5.330
6324-2RS	134		246	2.5	12.700
FL-61826-2RS/P5	136		159	1	0.816
6026-2RS	139		191	2	3.33
6226-2RZ/Z1	144		216	2.5	6.40
6226-2RS	144		216	2.5	6.40
6228-2RZ/Z1	154		236	2.5	7.52
6228-2RS	154		236	2.5	7.52
6030-2RS	161		214	2	4.050
6230-2RS	164		256	2.5	10.1