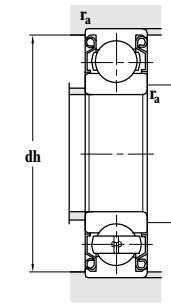
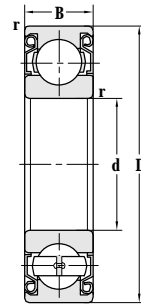
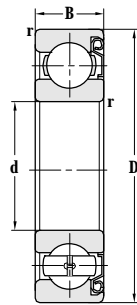


Deep Groove Ball Bearing(With Shields)

d 100~130 mm



Principal dimensions				Basic load ratings		Limit speed ratings		
d	D	B	r <sub>min</sub>	C <sub>r</sub>	C <sub>or</sub>	Grease	Oil	
mm				kN		r/min		
<b>100</b>	180	34	2.1	122	93.0	3400	4000	
	180	34	2.1	122	93.0	3400	4000	
	180	34	2.1	122	93.0	3400	4000	
	215	47	3	173	141	2800	3600	
	215	47	3	173	141	2800	3600	
	215	47	3	173	141	2800	3600	
<b>105</b>	160	26	2	73.0	62.8	4000	4800	
	190	36	2.1	135	102	3200	3800	
	225	49	3	240	154	2800	3400	
<b>110</b>	150	20	1.1	40.5	41.5	3900	4600	
	150	20	1.1	40.5	41.5	3900	4600	
	170	28	2	82.0	73.5	3800	4500	
	170	28	2	82.0	70.6	3800	4500	
	170	28	2	82.0	70.6	3800	4500	
	175	31	2.3	158	176	3800	4500	
	175	31	2.3	158	176	3800	4500	
	200	38	2.1	145	114	2800	3400	
	200	38	2.1	145	114	2800	3400	
	240	50	3	195	176	2400	3000	
	240	50	3	195	176	2400	3000	
	<b>120</b>	150	16	1	24.5	28.0	3800	4500
150		16.1	1	24.5	28.0	3800	4500	
165		22	1.1	53.0	54.0	3400	4000	
165		22	1.1	53.0	54.0	3400	4000	
180		28	2	85.5	80.0	3400	4000	
180		28	2	85.5	80.0	3400	4000	
180		28	2	85.5	80.0	3400	4000	
215		40	2.1	154	130	2800	3400	
215		40	2.1	154	130	2800	3400	
260		55	3	217	196	2400	3000	
<b>130</b>		180	24	1.5	65.0	67.0	3400	4000
		180	24	1.5	65.0	67.0	3400	4000

Designations	Abutment and fillet dimensions				Weight
	D <sub>smin</sub>	D <sub>smax</sub>	dh <sub>max</sub>	r <sub>amax</sub>	
	mm				kg
<b>6220-Z</b>	111		169	2	3.26
<b>6220-2Z</b>	111		169	2	3.26
<b>6220-2Z/YA7</b>	111	118	169	2	3.23
<b>6320-Z</b>	113		202	2.5	7.12
<b>6320-2Z</b>	113	131	202	2.5	7.14
<b>6320-2Z/YA7</b>	113	131	202	2.5	7.13
<b>6021-2Z/C3Z1</b>	116		149	2	1.66
<b>6221-2Z</b>	117		178	2	3.94
<b>6321-2Z</b>	119		211	2.5	8.12
<b>61922</b>	116.5		143.5	1	0.918
<b>61922M</b>	116.5		143.5	1	1.01
<b>6022-Z/HQ1</b>	119		161	2	2.40
<b>6022-Z</b>	119		161	2	1.94
<b>6022-2Z</b>	119		161	2	1.96
<b>6022X3M-Z</b>	122		163	2.3	2.67
<b>60722</b>	122		163	2.3	2.67
<b>6222-Z</b>	121		189	2	4.58
<b>6222-2Z</b>	121		189	2	4.61
<b>6322-2Z</b>	123		227	2.5	9.72
<b>6322-2Z/YA7</b>	123	146	227	2.5	9.69
<b>61824-2Z</b>	125		145	1	0.566
<b>61824-Z</b>	125		145	1	0.565
<b>61924</b>	126.5		158.5	1	1.21
<b>61924M</b>	126.5		158.5	1	1.54
<b>6024-2Z</b>	129	132	171	2	2.15
<b>6024-Z</b>	129	132	171	2	2.09
<b>6024-Z/C9</b>	129	132	171	2	2.09
<b>6224-2Z</b>	131		204	2	5.24
<b>6224-Z</b>	132		203	2	5.25
<b>6324-2Z</b>	134		246	2.5	12.6
<b>61926-2Z</b>	137		173	1.5	1.55
<b>61926-Z</b>	137		173	1.5	1.57