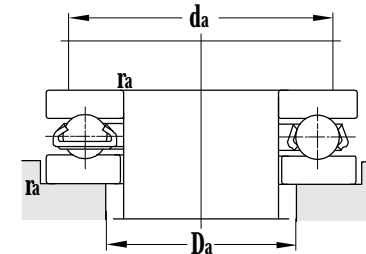
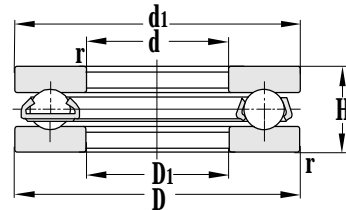
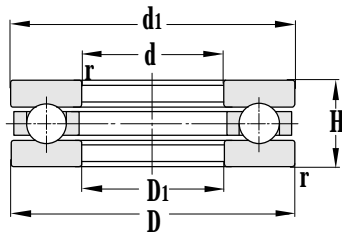


Thrust Ball Bearing

d 25-55 mm



Principal dimensions				Basic load ratings		Limit speed ratings		Designations
d	D	H	r _{min}	C _r	C _{or}	Grease	Oil	
mm				kN		r/min		
25	42	11	0.6	18.7	38.0	4800	6300	51105
	47	15	0.6	27.0	54.0	4000	5300	51205
	52	18	1	35.0	59.0	3400	4500	51305
30	47	11	0.6	19.6	42.0	4500	6000	51106
	52	16	0.6	27.3	50.0	3600	4800	51206
	60	21	1	42.5	70.0	2800	3800	51306
	70	28	1	71.0	134	2000	3000	51406
35	52	12	0.6	20.8	50.0	4300	5600	51107
	52	12	0.6	20.8	50.0	4300	5600	51107H
	52	12	0.6	20.8	50.0	4300	5600	51107M
	55	16	0.6	24.9	53.5	4300	5600	51107X3
	62	18	1	37.0	72.0	3000	4000	51207
	68	24	1	55.5	94.5	2400	3400	51307
	68	24	1	55.5	94.5	2400	3400	51307/YA6
	68	24	1	55.5	94.5	2400	3400	51307/YA6
40	60	13	0.6	27.3	62.0	3800	5000	51108
	60	13	0.6	27.3	62.0	3800	5000	51108H
	68	19	1	47.0	104	2800	3800	51208
	68	19	1	47.0	104	2800	3800	51208M
	78	26	1	68.5	120	2000	3000	51308
	100	28	1.1	75.0	189	1700	2400	51708
45	65	14	0.6	26.7	68.0	3400	4500	51109
	65	14	0.6	26.7	68.0	3400	4500	51109M
	73	20	1	38.0	85.0	2600	3600	51209
	85	28	1	74.5	150	1900	2800	51309
50	70	14	0.6	27.3	73.5	3200	4300	51110
	70	14	0.6	27.3	73.5	3200	4300	51110M
	78	22	1	54.5	114	2400	3400	51210
	95	31	1.1	96.0	186	1800	2600	51310
	110	43	1.5	159	335	1600	2500	51410M
55	78	16	0.6	33.5	83.0	2800	3800	51111

Other dimensions		Abutment and fillet dimensions			Weight
d1	D1	d _{amin}	D _{amax}	r _{amax}	
mm		mm			kg
42	26	35	32	0.6	0.0589
47	27	38	34	0.6	0.117
52	27	41	36	1	0.165
47	32	40	37	0.6	0.0642
52	32	43	39	0.6	0.138
60	32	48	42	1	0.266
70	32	54	46	1	3.94
52	37	45	42	0.6	0.0779
52	37	45	42	0.6	0.0779
52	37	45	42	0.6	0.0817
55	37	50	45	0.6	0.141
62	37	51	46	1	0.193
68	37	55	48	1	0.361
68	37	55	48	1	0.301
60	42	52	48	0.6	0.118
60	42	52	48	0.6	0.126
68	42	57	51	1	0.273
68	42	57	51	1	0.324
78	42	63	55	1	0.521
100	58	75	65	1	0.970
65	47	57	53	0.6	0.139
65	47	57	53	0.6	0.162
73	47	62	56	1	0.332
85	47	69	61	1	0.656
70	52	62	58	0.6	0.155
70	52	62	58	0.6	0.186
78	52	67	61	1	0.374
95	52	77	68	1	0.942
110	52	86	74	1.5	1.86
78	57	69	64	0.6	0.226