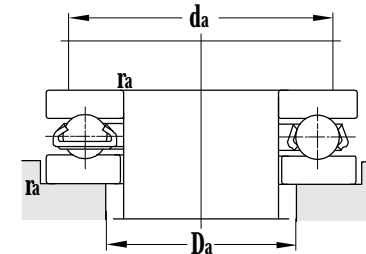
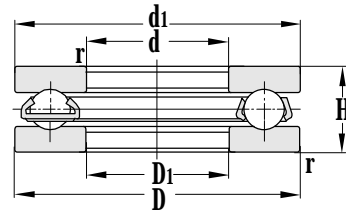
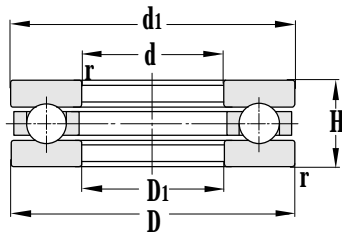


Thrust Ball Bearing

d 110~150 mm



Principal dimensions				Basic load ratings		Limit speed ratings		Designations
d	D	H	r _{min}	C _r	C _{or}	Grease	Oil	
mm				kN		r/min		
110	230	95	3	490	1200	750	900	51422M
120	155	25	1	86.5	330	1600	2200	51124
	155	25	1	86.5	330	1600	2200	51124M
	170	39	1.1	167	430	1100	1600	51224
	170	39	1.1	167	430	1100	1600	51224M
	210	70	2.1	350	960	800	1100	51324M
	210	70	2.1	350	960	800	1100	51324
	250	102	4	535	1670	600	800	51424M
130	170	27	3	111	415	1500	2000	51726M
	170	30	1	111	415	1400	1900	51126M
	170	30	1	111	415	1400	1900	51126
	190	45	1.5	230	575	1000	1500	51226
	190	45	1.5	230	575	1000	1500	51226M
	225	75	2.1	395	1120	750	1000	51326M
	225	75	2.1	395	1120	750	1000	51326
	270	110	4	635	1670	560	750	51426J
	270	110	4	635	1670	560	750	51426
	140	180	31	1	114	430	1300	1800
180		31	1	114	430	1300	1800	51128M
200		46	1.5	234	610	950	1400	51228
200		46	1.5	234	610	950	1400	51228M
240		80	2.1	415	1300	700	950	51328
280		112	4	630	1700	530	700	51428
150		190	31	1	117	430	1200	1700
	190	31	1	117	430	1200	1700	51130
	200	35	2.1	164	535	1100	1600	51730M
	215	50	1.5	262	785	900	1300	51230M
	215	50	1.5	262	785	900	1300	51230
	250	80	2.1	430	1370	670	900	51330M
	250	80	2.1	430	1370	670	900	51330
	300	120	4	675	2240	500	670	51430

Other dimensions		Abutment and fillet dimensions			Weight
d1	D1	d _{amin}	D _{amax}	r _{amax}	
mm		mm			kg
225	113	181	159	2.5	18.6
155	122	141	134	1	1.13
155	122	141	134	1	1.25
170	123	150	140	1	2.71
170	123	150	140	1	2.58
205	123	173	157	2	9.85
205	123	173	157	2	9.43
245	123	197	173	3	23.9
170	130.2	154	146	1	1.65
170	170	154	146	1	1.86
170	170	154	146	1	1.67
187	133	166	154	1.5	4.17
187	133	166	154	1.5	4.64
220	134	186	169	2	12.5
220	134	186	169	2	11.6
265	134	213	187	3	28.8
265	134	213	187	3	29.0
178	142	164	156	1	1.80
178	142	164	156	1	2.00
197	143	176	164	1.5	4.49
197	143	176	164	1.5	4.33
235	144	199	181	2	14.6
275	144	223	197	3	31.6
188	152	174	166	1	2.19
188	152	174	166	1	1.96
200	150.3	187	168	2	3.15
212	153	189	176	1.5	5.80
212	153	189	176	1.5	5.61
245	154	209	191	2	17.0
245	154	209	191	2	17.0
295	154	239	211	3	38.7