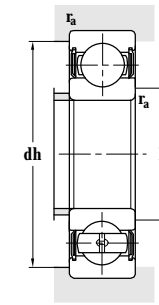
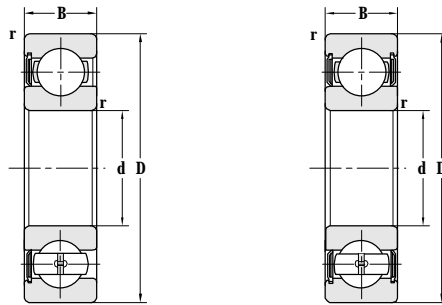


Deep Groove Ball Bearing(With Seals)

d 12-28 mm



Principal dimensions				Basic load ratings		Limit speed ratings
d	D	B	r _{min}	C _r	C _{or}	Grease
mm				kN		r/min
12	28	8	0.3	5.18	2.26	26000
14	47	14	1	13.6	6.6	11000
17	40	12	0.6	9.55	4.8	12000
	40	14	1	9.6	4.6	12000
18	75	16	1	20	14	5500
20	47	14	1	13.0	6.70	10000
	47	14	1	13.0	6.70	15000
22	56	16	1.1	18.4	9.25	13000
25	37	7	0.3	3.60	2.64	17000
	47	12	0.6	10.6	5.00	9500
	47	12	0.6	11.4	6.28	13000
	52	15	1	14.3	8.00	8500
	52	15	1	14.3	8.00	8500
	52	15	1	14.3	8.00	8500
	52	15	1	14.3	8.00	8500
	52	15	1	14.3	8.00	8500
	52	15	1	14.3	8.00	8500
	62	17	1.1	22.4	11.5	7500
	62	17	1.1	22.4	11.5	7500
	62	17	0.4	22.4	11.5	7500
	62	17	1.1	22.4	11.5	7500
	68	18	1.1	20.2	12.9	7500
	25.5	58	16	1	20.5	11.1
58		16	1	20.5	11.1	11000
28	68	18	1.1	32.5	13.0	6300
	68	18	1.1	25.0	13.9	6300

Designations	Abutment and fillet dimensions				Weight
	D _{smin}	D _{smax}	dh _{max}	r _{amax}	kg
	mm				
6001-2RS	14	14.5	26	0.3	0.023
6303-2RS	19		42	1	0.114
6203-2RS 6203X2-FS/YA6	21	24	36	0.6	0.065
	22	21	35	1	0.077
60/18-2RSN/YAD	24.5	51.3	68.5	1	0.365
6204-2RS 6204-2RZ	25.6		41.4	1	0.121
	25.6		41.4	1	0.110
63/22-2RS/C3-SAGW	29	30.8	49	1	0.183
61805-2RZ	27		35	0.3	0.022
6005-2RS	29	31	43	0.6	0.079
6005-Z	29		43	0.6	0.077
6205-2RS	30		47	1	0.130
6205-2RZ	30		47	1	0.125
6205-RS2	30		47	1	0.130
6205-RS	30		47	1	0.130
6205-2RS2	30		47	1	0.130
6205-2RS/FR	30		47	1	0.130
6305-2RS	31.5		55.5	1	0.232
6305-RS	31.5		55.5	1	0.223
6305TN1-2RS/YA6	32		55	1	0.211
6305-2RZ	32		55	1	0.222
6305X3/C3YA5	32		61	1	0.296
66/25.5-2RS-BYD 66/25.5-2RS/P53Z2	31		52.5	1	0.177
	31		52.5	1	0.186
63/28-RS/HA 63/28-2RS1/C3-DZ	34.5		61.5	1	0.305
	34.5	39.5	61.5	1	0.301