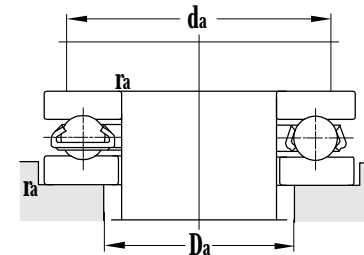
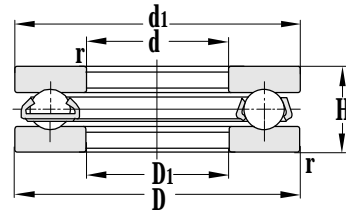
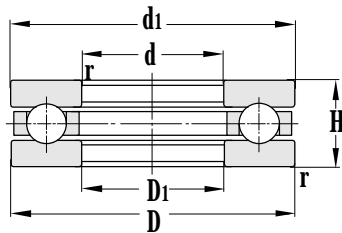


**Thrust Ball Bearing**

d 230~380 mm



Principal dimensions				Basic load ratings		Limit speed ratings		Designations
d	D	H	r <sub>min</sub>	C <sub>r</sub>	C <sub>or</sub>	Grease	Oil	
mm				kN		r/min		
<b>230</b>	300	53.4	2.1	264	955	650	900	<b>51746</b>
<b>240</b>	300	45	1.5	259	1020	850	1200	<b>51148</b>
	340	78	2.1	455	1960	630	860	<b>51248</b>
	340	70	2.5	415	1650	600	800	<b>51748</b>
	340	70	2.5	415	1650	600	800	<b>51748J</b>
	380	112	4	695	2870	430	600	<b>51348</b>
<b>260</b>	320	45	1.5	264	1080	800	1100	<b>51152</b>
	360	79	2.1	475	2120	600	800	<b>51252</b>
	360	79	2.1	475	2120	600	800	<b>51252J</b>
<b>280</b>	350	53	1.5	335	1430	640	900	<b>51156</b>
	380	80	2.1	495	2270	560	750	<b>51256</b>
<b>300</b>	380	62	2	415	1730	630	850	<b>51160</b>
	420	95	3	595	2940	530	710	<b>51260</b>
	435	104	3.7	740	3410	450	600	<b>51760</b>
	432	104.8	3.7	460	2240	450	600	<b>51760V</b>
<b>320</b>	400	63	2	425	1990	610	800	<b>51164</b>
	440	95	3	560	2940	500	700	<b>51264</b>
	399.5	63	2	425	1990	600	800	<b>51164X1</b>
<b>340</b>	420	64	2	420	1920	600	830	<b>51168</b>
	460	96	3	605	3130	450	600	<b>51268</b>
	460	96	3	605	3130	450	600	<b>51268/YB5</b>
	540	160	5	1120	5700	400	530	<b>51368</b>
<b>350</b>	476	85	3.7	630	3150	430	550	<b>51770</b>
<b>360</b>	440	65	2	430	2040	560	750	<b>51172</b>
	500	110	4	795	4050	400	530	<b>51272</b>
<b>380</b>	460	65	2	420	2110	850	1000	<b>51176/P4</b>

Other dimensions		Abutment and fillet dimensions			Weight
d1	D1	d <sub>amin</sub>	D <sub>amax</sub>	r <sub>amax</sub>	
mm		mm			kg
300	230.3	270	260	2	9.47
297	243	276	264	1.5	7.28
335	244	299	281	2	21.1
340	238	299	281	2.5	19.4
340	238	299	281	2.5	18.8
375	245	320	300	3	49.6
317	263	296	248	1.5	7.56
355	264	319	301	2	23.3
355	264	319	301	2	22.0
347	283	322	308	1.5	11.4
375	284	339	321	2	25.3
376	304	348	332	2	17.4
415	304	371	349	2.5	40.0
435	300.3	379	356	3	50.7
432	300.3	379	356	3	49.7
396	324	368	352	2	18.0
435	325	391	369	3	44.5
396	324	391	369	2	18.0
416	344	388	372	2	19.9
455	345	411	389	2.5	44.6
455	345	411	389	2.5	44.6
535	345	452	356	4	137
476	350.4	425	401	3	43.3
436	364	408	392	2	23.9
495	365	442	418	3	64.7
456	384	445	394	2	22.5