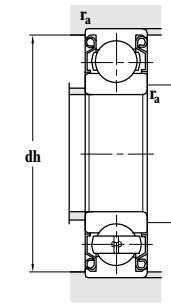
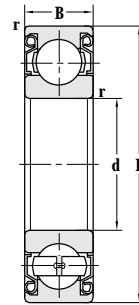
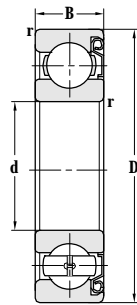


Deep Groove Ball Bearing (With Shields)



d 85-100 mm



| Principal dimensions |            |     |                  | Basic load ratings |                 | Limit speed ratings |      |
|----------------------|------------|-----|------------------|--------------------|-----------------|---------------------|------|
| d                    | D          | B   | r <sub>min</sub> | C <sub>r</sub>     | C <sub>or</sub> | Grease              | Oil  |
| mm                   |            |     |                  | kN                 |                 | r/min               |      |
| <b>85</b>            | 130        | 22  | 1.1              | 47.5               | 40.0            | 5000                | 6000 |
|                      | 150        | 28  | 2                | 84.0               | 62.0            | 4300                | 5000 |
|                      | 150        | 28  | 2                | 84.0               | 62.0            | 4300                | 5000 |
|                      | 150        | 28  | 2                | 84.0               | 62.0            | 4300                | 5000 |
|                      | 180        | 41  | 3                | 102                | 96.5            | 4300                | 5000 |
|                      | 180        | 41  | 3                | 102                | 96.5            | 4300                | 5000 |
|                      | 180        | 41  | 3                | 102                | 96.5            | 4300                | 5000 |
|                      | 180        | 41  | 3                | 102                | 96.5            | 4300                | 5000 |
|                      | 180        | 41  | 3                | 102                | 96.5            | 4300                | 5000 |
|                      | 180        | 41  | 3                | 102                | 96.5            | 4300                | 5000 |
| <b>90</b>            | 140        | 24  | 1.5              | 58.5               | 50.1            | 4800                | 5600 |
|                      | 140        | 24  | 1.5              | 58.5               | 50.0            | 4800                | 5600 |
|                      | 160        | 30  | 2                | 97.0               | 72.0            | 3800                | 4500 |
|                      | 160        | 30  | 2                | 97.0               | 72.0            | 3800                | 4500 |
|                      | 160        | 30  | 2                | 97.0               | 72.0            | 3800                | 4500 |
|                      | 190        | 43  | 3                | 144                | 108             | 3400                | 4000 |
|                      | 190        | 43  | 3                | 144                | 108             | 3400                | 4000 |
|                      | 190        | 43  | 3                | 144                | 108             | 3400                | 4000 |
|                      | 190        | 43  | 3                | 144                | 108             | 3400                | 4000 |
|                      | 190        | 43  | 3                | 144                | 108             | 3400                | 4000 |
| <b>95</b>            | 130        | 18  | 1.1              | 33.8               | 33.0            | 4600                | 5400 |
|                      | 145        | 24  | 1.5              | 78.5               | 54.0            | 4500                | 5300 |
|                      | 145        | 24  | 1.5              | 78.5               | 54.0            | 4500                | 5300 |
|                      | 145        | 24  | 1.5              | 78.5               | 54.0            | 4500                | 5300 |
|                      | 170        | 32  | 2.1              | 110                | 80.0            | 3600                | 4300 |
|                      | 170        | 32  | 2.1              | 110                | 80.0            | 3600                | 4300 |
|                      | 170        | 32  | 2.1              | 110                | 80.0            | 3600                | 4300 |
|                      | 200        | 45  | 3                | 152                | 118             | 3200                | 3800 |
|                      | 200        | 50  | 3                | 152                | 118             | 3200                | 3800 |
|                      | 200        | 45  | 3                | 152                | 118             | 3200                | 3800 |
|                      | 200        | 45  | 3                | 152                | 118             | 3200                | 3800 |
|                      | 200        | 45  | 3                | 152                | 118             | 3200                | 3800 |
|                      | <b>100</b> | 150 | 24               | 1.5                | 62.4            | 52.9                | 4300 |
| 150                  |            | 24  | 1.5              | 62.4               | 52.9            | 4300                | 5000 |
| 150                  |            | 24  | 1.5              | 62.4               | 52.9            | 4300                | 5000 |

| Designations             | Abutment and fillet dimensions |                   |                   |                   | Weight |
|--------------------------|--------------------------------|-------------------|-------------------|-------------------|--------|
|                          | D <sub>smin</sub>              | D <sub>smax</sub> | dh <sub>max</sub> | r <sub>amax</sub> |        |
|                          | mm                             |                   |                   |                   | kg     |
| <b>6017-2Z</b>           | 92                             |                   | 123               | 1                 | 0.965  |
| <b>6217-Z</b>            | 94                             |                   | 141               | 2                 | 1.85   |
| <b>6217-2Z</b>           | 94                             | 99                | 141               | 2                 | 1.85   |
| <b>6217-2Z/YA7</b>       | 94                             | 99                | 141               | 2                 | 1.81   |
| <b>6317-Z</b>            | 98                             |                   | 167               | 2.5               | 4.35   |
| <b>6317-2Z</b>           | 98                             |                   | 167               | 2.5               | 4.35   |
| <b>6317-2Z/YA7</b>       | 98                             | 107               | 167               | 2.5               | 4.35   |
| <b>IS-6317-2Z/P6CMV2</b> | 98                             |                   | 167               | 2.5               | 4.30   |
| <b>6317-2Z/P6CMV2</b>    | 98                             |                   | 167               | 2.5               | 4.30   |
| <b>6018-Z</b>            | 98                             |                   | 132               | 1.5               | 1.16   |
| <b>6018-2Z</b>           | 98                             |                   | 132               | 1.5               | 1.17   |
| <b>6218-Z</b>            | 99                             |                   | 151               | 2                 | 2.21   |
| <b>6218-2Z</b>           | 99                             |                   | 151               | 2                 | 2.21   |
| <b>6218-2Z/YA7</b>       | 99                             | 105               | 151               | 2                 | 2.20   |
| <b>6318-2Z/YA7</b>       | 103                            | 114               | 177               | 2.5               | 5.04   |
| <b>6318M-Z/YA8P54</b>    | 103                            |                   | 177               | 2.5               | 6.39   |
| <b>6318-2Z</b>           | 103                            |                   | 177               | 2.5               | 5.07   |
| <b>6318-Z</b>            | 103                            |                   | 177               | 2.5               | 5.04   |
| <b>61919-Z</b>           | 101.5                          |                   | 123.5             | 1                 | 0.579  |
| <b>6019-Z</b>            | 103                            |                   | 137               | 1.5               | 1.16   |
| <b>6019-Z/HQ1</b>        | 103                            |                   | 137               | 1.5               | 1.31   |
| <b>6019-2Z</b>           | 103                            |                   | 137               | 1.5               | 1.17   |
| <b>6219-Z</b>            | 106                            | 111               | 159               | 2                 | 2.63   |
| <b>6219-2Z</b>           | 106                            | 111               | 159               | 2                 | 2.65   |
| <b>6219-2Z/YA7</b>       | 106                            | 111               | 159               | 2                 | 2.62   |
| <b>6319-2Z</b>           | 108                            | 113               | 187               | 2.5               | 5.93   |
| <b>6319X2K-2Z</b>        | 77                             |                   | 187               | 2.5               | 6.40   |
| <b>6319-Z</b>            | 109                            |                   | 186               | 2.5               | 5.87   |
| <b>IS-6319</b>           | 109                            |                   | 186               | 2.5               | 5.48   |
| <b>6319-2Z/YA7</b>       | 108                            | 113               | 187               | 2.5               | 5.89   |
| <b>6020-2Z</b>           | 108                            |                   | 142               | 1.5               | 1.17   |
| <b>6020-2Z/C9</b>        | 108                            | 110               | 142               | 1.5               | 1.13   |
| <b>6020-Z</b>            | 108                            |                   | 142               | 1.5               | 1.15   |