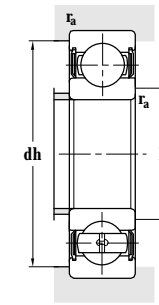
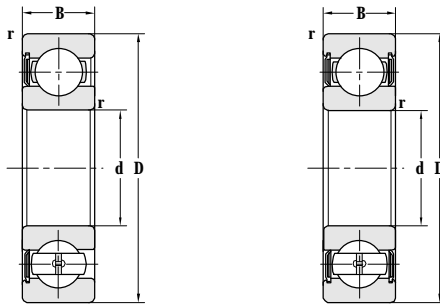


Deep Groove Ball Bearing(With Seals)

d 28-35 mm



Principal dimensions				Basic load ratings		Limit speed ratings
d	D	B	r <sub>min</sub>	C <sub>r</sub>	C <sub>or</sub>	Grease
mm				kN		r/min
<b>28</b>	68	18	1.1	23.6	13.1	6300
	68	18	1.1	23.5	13.0	6300
<b>30</b>	55	13	1	13.2	7.96	8000
	55	13	1	13.2	7.96	12000
	62	16	1	19.5	11.3	10000
	62	16	1	19.5	11.3	10000
	62	16	1	19.5	11.3	10000
	62	16	1	19.5	11.3	10000
	62	16	1	19.5	11.3	10000
	62	16	1	19.5	11.3	10000
	62	16	1	19.5	11.3	10000
	62	20	1	19.0	11.0	10000
	72	19	1.1	28.4	15.4	6300
	72	19	1.1	28.4	15.4	6300
	72	19	1.1	28.4	15.4	6300
	72	19	1.7	28.4	15.4	6300
	72	19	1.7	28.4	15.4	6300
	75	20	0.5	25.3	17.5	6300
75	20	0.5	32.5	18.0	9000	
<b>32</b>	80	23	0.5	36.5	20.0	9000
	72	25	1	26.7	15.0	9400
	75	20	1.5	22.0	16.0	8800
	80	23	0.5	27.9	19.6	8400
	80	23	0.3	36.5	19.6	8400
<b>35</b>	62	14	1	16.0	10.3	7000
	62	14	1	16.0	10.3	7000
	64	14	1	16.0	10.3	7000
	72	17	1.1	26.0	14.7	6300
	72	17	1.1	26.0	14.7	6300
	72	17	1.1	26.0	14.7	6300
	72	17	1.1	26.0	14.7	6300
	72	17	1.1	26.0	14.7	6300
	72	17	1.1	26.0	14.7	6300
	72	17	1.1	26.0	14.7	6300
	80	21	1.5	33.4	19.2	6000

Designations	Abutment and fillet dimensions				Weight
	D <sub>smin</sub>	D <sub>smax</sub>	dh <sub>max</sub>	r <sub>amax</sub>	
	mm				kg
<b>63/28-2RS-DZ</b>	34.5		61.5	1	0.302
<b>63/28-RS</b>	34.5		61.5	1	0.300
<b>6006-2RS</b>	35		50	1	0.118
<b>6006-2RZ</b>	34.6		50.4	1	0.118
<b>6206-RS</b>	35		56	1	0.212
<b>6206-2RS</b>	35		56	1	0.214
<b>6206-2RS-DZ</b>	35		56	1	0.214
<b>6206-RS2</b>	35		56	1	0.212
<b>6206-2RZ</b>	35	38	56	1	0.224
<b>6206-2RS1/C3-DZ</b>	35	38	56	1	0.200
<b>62206-2RS</b>	35	38	56	1	0.255
<b>6306-2RS</b>	36.5	41.5	65.5	1	0.355
<b>6306-RS</b>	36.5	41.5	65.5	1	0.353
<b>6306-2RZ</b>	36.5	41.5	65.5	1	0.355
<b>6306-2RZ/YA6</b>	36.5	41.5	65.5	1	0.355
<b>6306-2RS/YA6</b>	36.5	41.5	65.5	1	0.338
<b>6306X3-2RSN/Y</b>	36.5		68.5	0.5	0.475
<b>450706K</b>	36.5		68.5	0.5	0.474
<b>4507/32KU</b>	37.5		72.5	0.5	0.534
<b>66/32WB1-2RSZ/C9</b>	39		69.5	1	0.408
<b>63/32-2RSN</b>	41.5		65.5	1.5	0.413
<b>63/32X3-2RSN/C9Y</b>	37.5		72.5	0.5	0.534
<b>63/32X3-2RSN/HAY</b>	35		77	0.3	0.534
<b>6007-2RZ</b>	39.6		57.4	1	0.169
<b>6007-2RS</b>	39.6		57.4	1	0.175
<b>6007X1-2RS/C3</b>	39.6		57.4	1	0.196
<b>6207-RS</b>	41.5		65.5	1	0.296
<b>6207-RS2</b>	41.5		65.5	1	0.296
<b>6207-2RS2</b>	41.5		65.5	1	0.299
<b>6207-2RS</b>	41.5		65.5	1	0.299
<b>6207SC-2RS</b>	41.5		65.5	1	0.401
<b>6307-RS</b>	43		72	1.5	0.480