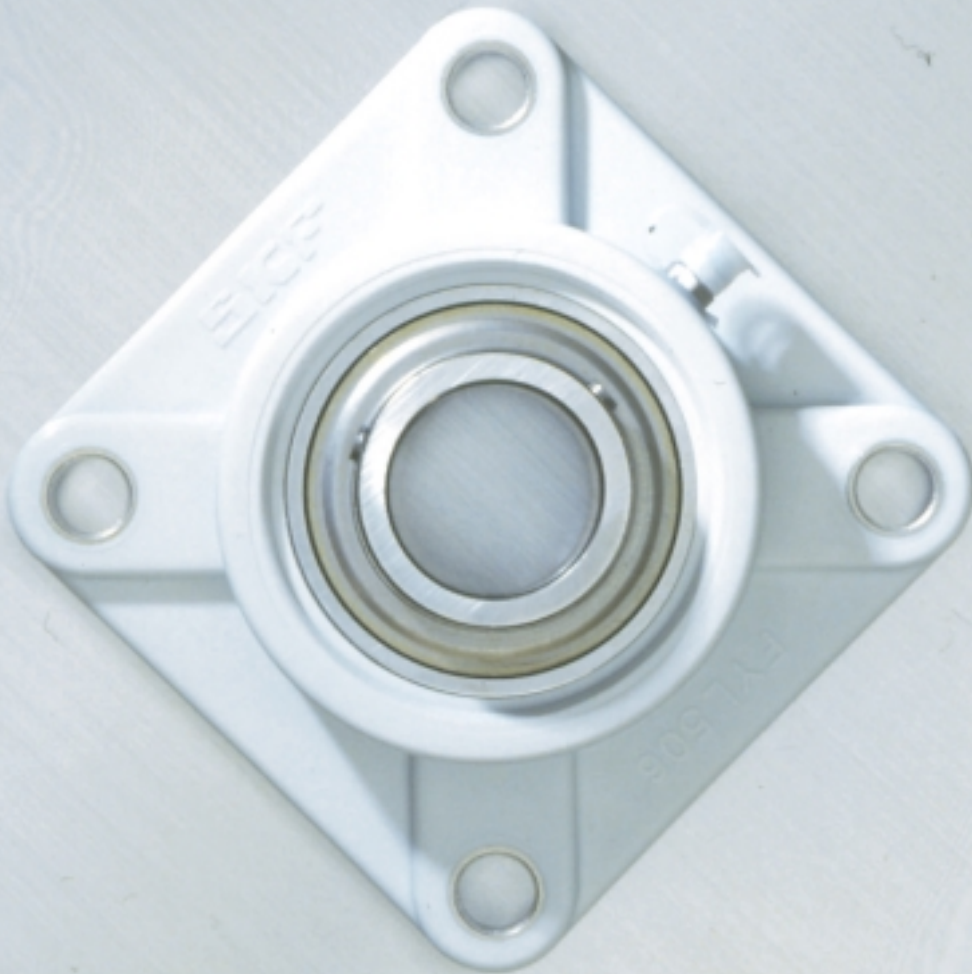


SKF

The solution for the food industry



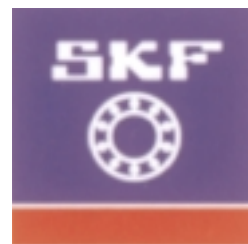
The SKF brand now stands for more than ever before, and means more to you as a valued customer.

While SKF maintains its leadership as the hallmark of quality bearings throughout the world, new dimensions in technical advances, product support and services have evolved SKF into a truly solutions-oriented supplier, creating greater value for customers.

These solutions encompass ways to bring greater productivity to customers, not only with breakthrough application-specific products, but also through leading-edge design simulation tools and consultancy services, plant asset efficiency maintenance programs, and the industry's most advanced supply management techniques.

The SKF brand still stands for the very best in rolling bearings, but it now stands for much more.

SKF - The knowledge engineering company.



The food industry has a new ally

The food and beverage market offers enormous growth potential, being one of the largest manufacturing and distribution sector segments in the economy. The processed food market itself grows almost at 10% per year, and has been growing at this rate for the past 25 years. The reasons of such a growth? An increased per capita income, lifestyle changes and technological innovations made necessary by world food safety trends. SKF has decided to apply its know-how, quality standards and research results on materials and technologies to create a wide range of high quality solutions in this demanding market. The result is a line of products that combines high resistance, advanced technology and extended service life.



Fit and forget

SKF is now introducing the Food Line, a new line of reliable, user-friendly and long lasting bearings and bearing units. One of strengths of the Food Line series is the top performing multifunctional sealing system. Because of this feature, you won't need any maintenance or re-lubrication for the whole unit life. Bearing units with this sealing system are successfully in place since 4 to 5 years without re-greasing operations.

The merge of unique bearing and housing designs with the advanced housing manufacturing process gives top technical performances and bring savings in operations.

Making re-greasing unnecessary means to get rid of:

- the grease handling (used grease must be collected and delivered to companies qualified for the disposing of waste material),
- the cost of re-greasing systems
- the cost of grease purchasing
- the cost of unplanned production stops for re-greasing

The cost per unit costs multiplied by the number of units operating in the plants will show unexpected possible savings.

For extreme applications, where experience shows the need, the Food Line offers the possibility to re-grease the unit. The whole range of bearing units is provided with a relubrication system.

The SKF Food Line

Frequent washing and rinsing, safe potential contact with food, long lasting solutions, general high hygienic, these are of the specific requirements of the food processing industry. The high corrosion resistance of the Food Line units provides the answer to these severe demands, since they incorporate stainless-steel or zinc-coated bearings and polyamide or polyester housing material.

The SKF Food Line provides solutions for metric and inch shaft sizes.

The SKF Food Line comprises two complementary designs (L-design and KC-design), in several housing shapes.

The extensive range is completed with open and closed end covers, available as accessories.

The whole program is made easily accessible thanks to the proven SKF global distribution network.



L design

- specifically designed for the food industry
- interchangeable with international standards
- housings made of glass fibers reinforced polyester
- machined spherical seats
- SKF light-grey color
- smoothed shapes to achieve highest respect of safety and hygienic trends
- stainless steel grease nipple fitted in a moulded stainless steel bushing
- one-piece stainless steel bolt hole bushings
- solid base
- open or closed light-grey end cover
- double side cover seat available on pillow blocks
- five housing shapes available

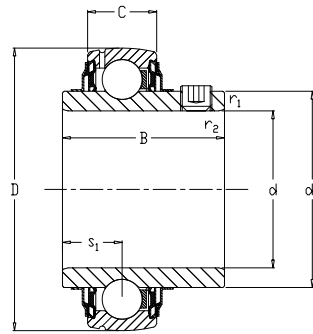


KC design

- conceived for "clean" applications
- interchangeable with international standards
- housings made of glass fibers reinforced polyester
- incorporating a steel coil to provide high dimensional stability
- SKF light-grey color
- light weight
- stainless steel grease nipple
- stainless steel bolt hole bushing
- flat base
- black end covers
- optimized resistance to shock loads, vibrations
- centring diameter on flanged housings



Stainless steel bearings

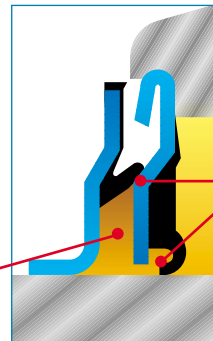


YAR ...-2RF/HV



Unit designation	d		d ₁ mm	D mm	B mm	C mm	s ₁ mm	r _{1,2} min mm	C kN	C ₀ kN	Mass kg
	mm	inch									
YAR 204-012-2RF/HV	3/4	19,05	28,2	47	31,0	14	18,3	0,6	10,8	6,55	0,142
YAR 204-2RF/HV		20	28,2	47	31,0	14	18,3	0,6	10,8	6,55	0,135
YAR 205-2RF/HV		25	33,7	52	34,1	15	19,8	0,6	11,9	7,8	0,172
YAR 205-100-2RF/HV	1	25,4	33,7	52	34,1	15	19,8	0,6	11,9	7,8	0,168
YAR 206-2RF/HV		30	39,7	62	38,1	18	22,2	0,6	16,3	11,2	0,276
YAR 206-103-2RF/HV	1 3/16	30,162	39,7	62	38,1	18	22,2	0,6	16,3	11,2	0,274
YAR 207-104-2RF/HV	1 1/4	31,75	46,1	72	42,9	19	25,4	1	21,6	15,3	0,462
YAR 207-106-2RF/HV	1 3/8	34,925	46,1	72	42,9	19	25,4	1	21,6	15,3	0,406
YAR 207-2RF/HV		35	46,1	72	42,9	19	25,4	1	25,5	15,3	0,405
YAR 207-107-2RF/HV	1 7/16	36,512	46,1	72	42,9	19	25,4	1	25,5	15,3	0,376
YAR 208-108-2RF/HV	1 1/2	38,1	51,8	80	49,2	21	30,2	1	24,7	19	0,593
YAR 208-2RF/HV		40	51,8	80	49,2	21	30,2	1	24,7	19	0,548

2RF SEALING SYSTEMS:
SUPERAGRISEAL + RUBBERIZED FLINGER

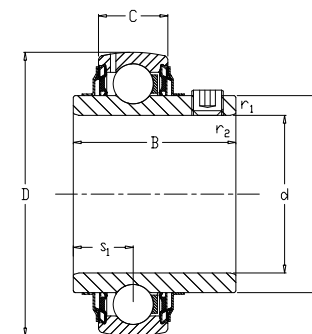


Low friction rubber lips
to form a double barrier
against contaminants

Grease for additional
sealing effect

Rings	AISI 420 B
Balls	AISI 420 C
Screws	AISI 304 (from size 204 to size 207)
SEALS, FLINGERS	AISI 304 + NBR
Cage	Fibre glass reinforced polyamide
Grease	Food Industry approved USDA H1

Zinc-coated bearings

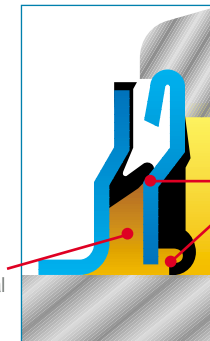


YAR ...-2RF/VE495



Unit designation	d		d ₁ mm	D mm	B mm	C mm	s ₁ mm	r _{1,2} min mm	C kN	C ₀ kN	Mass kg
	mm	inch									
YAR 204-2RF/VE495		20	28,20	47	31,0	14	18,3	0,6	12,7	6,55	0,135
YAR 205-2RF/VE495		25	33,74	52	34,1	15	19,8	0,6	14	7,8	0,172
YAR 206-2RF/VE495		30	39,70	62	38,1	18	22,2	0,6	19,5	11,2	0,276
YAR 207-2RF/VE495		35	46,10	72	42,9	19	25,4	1	25,5	15,3	0,405
YAR 208-2RF/VE495		40	51,80	80	49,2	21	30,2	1	30,7	19	0,548

2RF SEALING SYSTEMS:
SUPERAGRISEAL + RUBBERIZED FLINGER

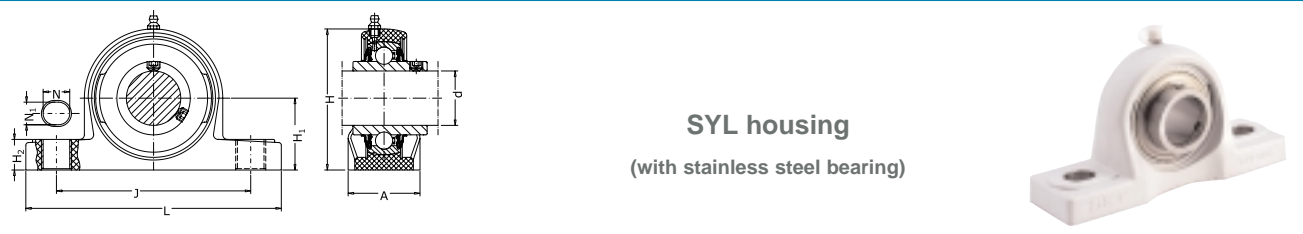


Low friction rubber lips
to form a double barrier
against contaminants

Grease for additional
sealing effect

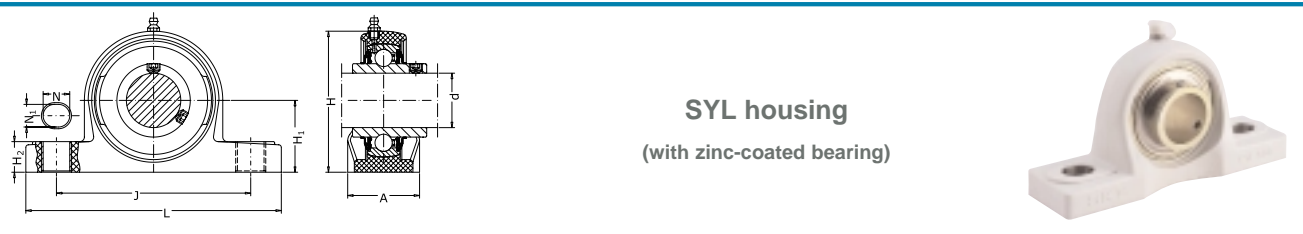
Rings	100Cr6, Zinc-coated
Balls	100Cr6
Screws	AISI 304 (from size 204 to size 207)
	AISI 420 (size 208)
Seals, Flingers	AISI 304 + NBR
Cage	Fibre glass reinforced polyamide
Grease	Food Industry approved USDA H1

Plummer block unit with composite housing



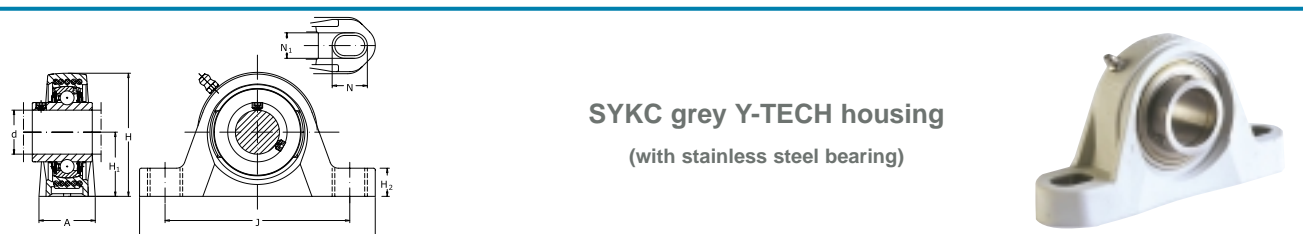
SYL housing
(with stainless steel bearing)

Unit designation	d mm inch	A mm	H mm	H ₁ mm	H ₂ mm	J mm	L mm	N mm	N ₁ mm	Bolt size	Bearing designation
SYL 3/4 TH	3/4	38	65,5	33,3	14,2	95	127	14	11	M10	YAR 204-012-2RF/HV
SYL 20 TH	20	38	65,5	33,3	14,2	95	127	14	11	M10	YAR 204-2RF/HV
SYL 25 TH	25	38	71	36,5	14,5	105	140	14	11	M10	YAR 205-2RF/HV
SYL 1. TH	1	38	71	36,5	14,5	105	140	14	11	M10	YAR 205-100-2RF/HV
SYL 30 TH	30	46	83	42,9	17,8	119	163	18	14	M12	YAR 206-2RF/HV
SYL 1.1/4 TH	1.1/4	48	94	47,6	18	127	167	18	14	M12	YAR 207-104-2RF/HV
SYL 35 TH	35	48	94	47,6	18	127	167	18	14	M12	YAR 207-2RF/HV
SYL 1.1/2 TH	1.1/2	54	98	49,2	19,5	137	184	18	14	M12	YAR 208-108-2RF/HV
SYL 40 TH	40	54	98	49,2	19,5	137	184	18	14	M12	YAR 208-2RF/HV



SYL housing
(with zinc-coated bearing)

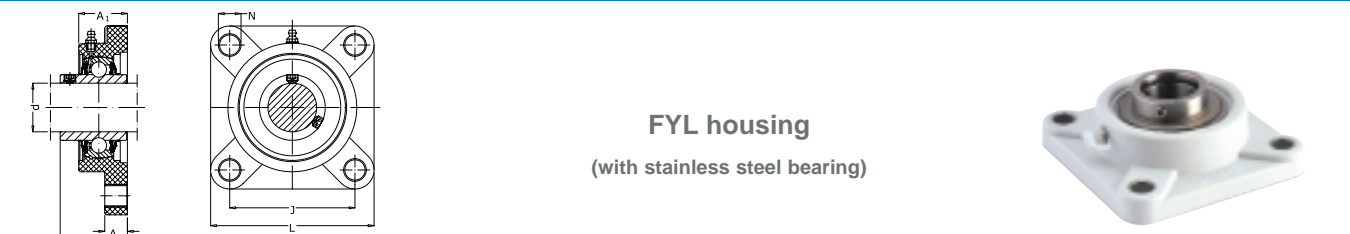
Unit designation	d mm inch	A mm	H mm	H ₁ mm	H ₂ mm	J mm	L mm	N mm	N ₁ mm	Bolt size	Bearing designation
SYL 20 TR/VE495	20	38	65,5	33,3	14,2	95	127	14	11	M10	YAR 204-2RF/VE495
SYL 25 TR/VE495	25	38	71	36,5	14,5	105	140	14	11	M10	YAR 205-2RF/VE495
SYL 30 TR/VE495	30	46	83	42,9	17,8	119	163	18	14	M12	YAR 206-2RF/VE495
SYL 35 TR/VE495	35	48	94	47,6	18	127	167	18	14	M12	YAR 207-2RF/VE495
SYL 40 TR/VE495	40	54	98	49,2	19,5	137	184	18	14	M12	YAR 208-2RF/VE495



SYKC grey Y-TECH housing
(with stainless steel bearing)

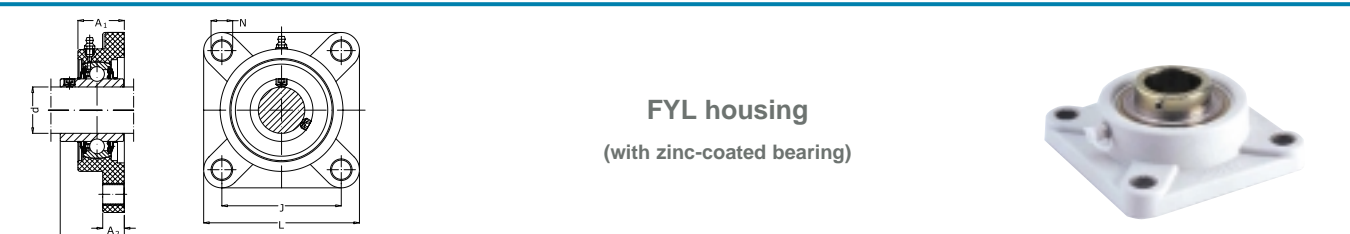
Unit designation	d mm inch	A mm	H mm	H ₁ mm	H ₂ mm	J mm	L mm	N mm	N ₁ mm	Bolt size	Bearing designation
SYKC 20 NTH	20	32	64	33,3	16	96	126	17,5	12,5	M10	YAR 204-2RF/HV
SYKC 25 NTH	25	32	70,5	36,5	16	105	134	17,5	12,5	M10	YAR 205-2RF/HV
SYKC 30 NTH	30	40	82	42,9	19	121	159	21,5	14,5	M12	YAR 206-2RF/HV
SYKC 35 NTH	35	45	93	47,6	19	126	164	21,5	14,5	M12	YAR 207-2RF/HV
SYKC 40 NTH	40	48	99	49,2	19	136	176	21,5	14,5	M12	YAR 208-2RF/HV

Plummer block unit with square flange housing



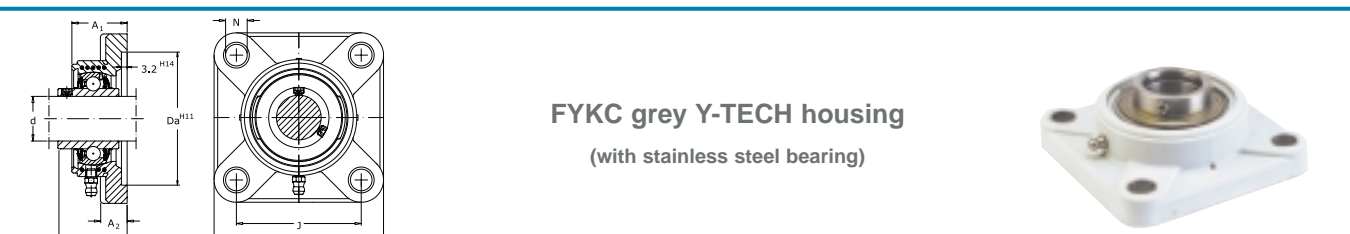
FYL housing
(with stainless steel bearing)

Unit designation	d mm inch	A ₁ mm	A ₂ mm	J mm	L mm	N mm	T mm	Bolt size	Bearing designation
FYL 3/4 THR	3/4	27,8	13,4	63,5	86	11	36,3	M10	YAR 204-012-2RFGR/HV
FYL 20 THR	20	27,8	13,4	63,5	86	11	36,3	M10	YAR 204-2RFGR/HV
FYL 25 THR	25	28	14,3	70	95	11	36,7	M10	YAR 205-2RFGR/HV
FYL 1. THR	1	28	14,3	70	95	11	36,7	M10	YAR 205-100-2RFGR/HV
FYL 30 THR	30	31,5	14,3	83	107	11	41,4	M10	YAR 206-2RFGR/HV
FYL 1.1/4 THR	1.1/4	34,8	15,5	92	118	13	46,9	M12	YAR 207-104-2RFGR/HV
FYL 35 THR	35	34,8	15,5	92	118	13	46,9	M12	YAR 207-2RFGR/HV
FYL 1.1/2 THR	1.1/2	37,5	17	102	130	14	53,2	M12	YAR 208-108-2RFGR/HV
FYL 40 THR	40	37,5	17	102	130	14	53,2	M12	YAR 208-2RFGR/HV



FYL housing
(with zinc-coated bearing)

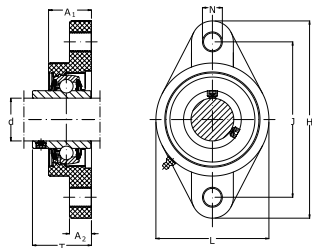
Unit designation	d mm inch	A ₁ mm	A ₂ mm	J mm	L mm	N mm	T mm	Bolt size	Bearing designation
FYL 20 TR/VE495	20	27,8	13,4	63,5	86	11	36,3	M10	YAR 204-2RF/VE495
FYL 25 TR/VE495	25	28	14,3	70	95	11	36,7	M10	YAR 205-2RF/VE495
FYL 30 TR/VE495	30	31,5	14,3	83	107	11	41,4	M10	YAR 206-2RF/VE495
FYL 35 TR/VE495	35	34,8	15,5	92	118	13	46,9	M12	YAR 207-2RF/VE495
FYL 40 TR/VE495	40	37,5	17	102	130	14	53,2	M12	YAR 208-2RF/VE495



FYKC grey Y-TECH housing
(with stainless steel bearing)

Unit designation	d mm inch	A ₁ mm	A ₂ mm	Da mm	J mm	L mm	N mm	T mm	Bolt size	Bearing designation
FYKC 20 NTH	20	30	15	68,3	63,5	86	12	37,3	M10	YAR 204-2RF/HV
FYKC 25 NTH	25	31	15	74,6	70	95	12	38,8	M10	YAR 205-2RF/HV
FYKC 30 NTH	30	33	15,3	93,7	82,5	108	12	42,2	M10	YAR 206-2RF/HV
FYKC 35 NTH	35	35	17	106,4	92	118	14,5	46,4	M12	YAR 207-2RF/HV
FYKC 40 NTH	40	39	17	115,9	101,5	130	14,5	54,2	M12	YAR 208-2RF/HV

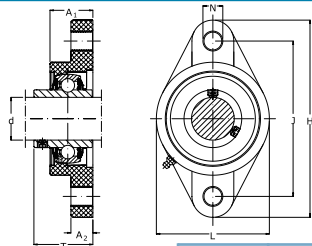
Plummer block unit with oval flanged housing



FYTL housing
(with stainless steel bearing)



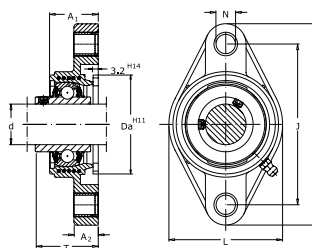
Unit designation	d mm inch	A ₁ mm	A ₂ mm	H mm	J mm	L mm	N mm	T mm	Bolt size	Bearing designation
FYTL 3/4 THR	3/4	26,5	11,4	113	90	65	11	33,3	M10	YAR 204-012-2RFGR/HV
FYTL 20 THR	20	26,5	11,4	113	90	65	11	33,3	M10	YAR 204-2RFGR/HV
FYTL 25 THR	25	29,1	13,5	130	99	70	11	35,8	M10	YAR 205-2RFGR/HV
FYTL 1. THR	1	29,1	13,5	130	99	70	11	35,8	M10	YAR 205-100-2RFGR/HV
FYTL 30 THR	30	30,5	13,3	148	117	80	11	40,2	M10	YAR 206-2RFGR/HV
FYTL 1.1/4 THR	1.1/4	32,8	16,1	163	130	90	13	44,4	M12	YAR 207-104-2RFGR/HV
FYTL 35 THR	35	32,8	16,1	163	130	90	13	44,4	M12	YAR 207-2RFGR/HV
FYTL 1.1/2 THR	1.1/2	37,5	20	176	144	100	14	51,2	M12	YAR 208-108-2RFGR/HV
FYTL 40 THR	40	37,5	20	176	144	100	14	51,2	M12	YAR 208-2RFGR/HV



FYTL housing
(with zinc-coated bearing)



Unit designation	d mm inch	A ₁ mm	A ₂ mm	H mm	J mm	L mm	N mm	T mm	Bolt size	Bearing designation
FYTL 20 TR/VE495	20	26,5	11,4	113	90	65	11	33,3	M10	YAR 204-2RF/VE495
FYTL 25 TR/VE495	25	29,1	13,5	130	99	70	11	35,8	M10	YAR 205-2RF/VE495
FYTL 30 TR/VE495	30	30,5	13,3	148	117	80	11	40,2	M10	YAR 206-2RF/VE495
FYTL 35 TR/VE495	35	32,8	16,1	163	130	90	13	44,4	M12	YAR 207-2RF/VE495
FYTL 40 TR/VE495	40	37,5	20	176	144	100	14	51,2	M12	YAR 208-2RF/VE495

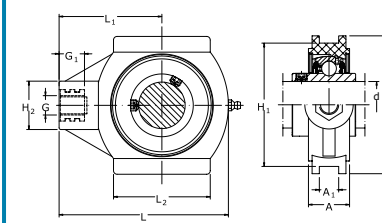


FYTBKC grey Y-TECH housing
(with stainless steel bearing)



Unit designation	d mm inch	A ₁ mm	A ₂ mm	Da mm	H mm	J mm	L mm	N mm	T mm	Bolt size	Bearing designation
FYTBKC 20 NTH	20	29,5	15	50,8	112	90	60,5	12	37,3	M10	YAR 204-2RF/HV
FYTBKC 25 NTH	25	30	15	63,5	124	99	70	12	38,8	M10	YAR 205-2RF/HV
FYTBKC 30 NTH	30	33	15	76,2	142,5	116,5	83	12	42,2	M10	YAR 206-2RF/HV
FYTBKC 35 NTH	35	35	17	88,9	156	130	96	14,5	46,4	M12	YAR 207-2RF/HV

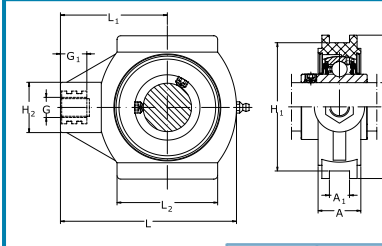
Take-up unit with composite housing



TUL housing
(with stainless steel bearing)



Unit designation	d mm inch	A mm	A ₁ mm	H mm	H ₁ mm	H ₂ mm	L mm	L ₁ mm	L ₂ mm	G ₁ mm	G thread	Bearing designation
TUL 3/4 TH	3/4	27,5	12	89	76	36	99	64	46	21	M16	YAR 204-012-2RF/HV
TUL 20 TH	20	27,5	12	89	76	36	99	64	46	21	M16	YAR 204-2RF/HV
TUL 25 TH	25	27,5	12	89	76	36	99	64	46	21	M16	YAR 205-2RF/HV
TUL 1. TH	1	27,5	12	89	76	36	99	64	46	21	M16	YAR 205-100-2RF/HV
TUL 30 TH	30	34	12	102	89	40	125	76	63	21	M16	YAR 206-2RF/HV
TUL 1.1/4 TH	1.1/4	34	12	102	89	40	125	76	63	21	M16	YAR 207-104-2RF/HV
TUL 35 TH	35	34	12	102	89	40	125	76	63	21	M16	YAR 207-2RF/HV
TUL 1.1/2 TH	1.1/2	34	16	114	102	40	140	85	80	21	M16	YAR 208-108-2RF/HV
TUL 40 TH	40	34	16	114	102	40	140	85	80	21	M16	YAR 208-2RF/HV

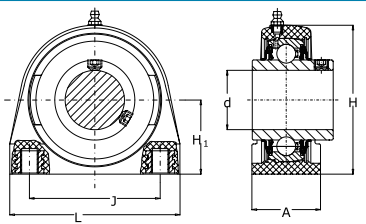


TUL housing
(with zinc-coated bearing)

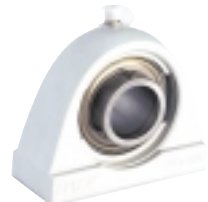


Unit designation	d mm inch	A mm	A ₁ mm	H mm	H ₁ mm	H ₂ mm	L mm	L ₁ mm	L ₂ mm	G ₁ mm	G thread	Bearing designation
TUL 20 TR /VE495	20	27,5	12	88	76	36	99	64	47	21	M16	YAR 204-2RF/VE495
TUL 25 TR /VE495	25	27,5	12	88	76	36	99	64	47	21	M16	YAR 205-2RF/VE495
TUL 30 TR /VE495	30	34	12	102	89	40	125	76	63	21	M16	YAR 206-2RF/VE495
TUL 35 TR /VE495	35	34	12	102	89	40	125	76	63	21	M16	YAR 207-2RF/VE495
TUL 40 TR /VE495	40	34	16	114	102	40	140	85	80	21	M16	YAR 208-2RF/VE495

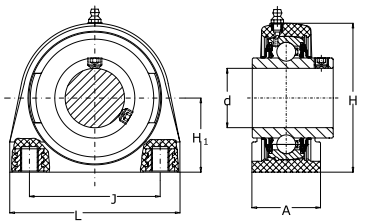
Short base unit with composite housing



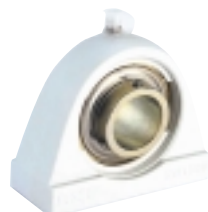
SYFL housing
(with stainless steel bearing)



Unit designation	d		A mm	H mm	H ₁ mm	J mm	L mm	G ₁ mm	G thread	Bearing designation
	mm	inch								
SYFL 3/4 TH		3/4	34,5	66	33,3	50,8	72,8	12	M8	YAR 204-012-2RF/HV
SYFL 20 TH	20		34,5	66	33,3	50,8	72,8	12	M8	YAR 204-2RF/HV
SYFL 25 TH	25		39,5	73,5	36,5	50,8	76,2	12	M10	YAR 205-2RF/HV
SYFL 1. TH		1	39,5	73,5	36,5	50,8	76,2	12	M10	YAR 205-100-2RF/HV
SYFL 30 TH	30		42,5	84	42,9	76,2	101	12	M10	YAR 206-2RF/HV
SYFL 1.1/4 TH		1.1/4	47,5	95	47,6	82,6	110	15,5	M10	YAR 207-104-2RF/HV
SYFL 35 TH	35		47,5	95	47,6	82,6	110	15,5	M10	YAR 207-2RF/HV
SYFL 1.1/2 TH		1.1/2	48	100,5	49,2	88,9	120	16	M12	YAR 208-108-2RF/HV
SYFL 40 TH	40		48	100,5	49,2	88,9	120	16	M12	YAR 208-2RF/HV



SYFL housing
(with zinc-coated bearing)



Unit designation	d		A mm	H mm	H ₁ mm	J mm	L mm	G ₁ mm	G thread	Bearing designation
	mm	inch								
SYFL 20 TR/VE495	20		34,5	66	33,3	50,8	72,8	12	M8	YAR 204-2RF/VE495
SYFL 25 TR/VE495	25		39,5	73,5	36,5	50,8	76,2	12	M10	YAR 205-2RF/VE495
SYFL 30 TR/VE495	30		42,5	84	42,9	76,2	101	12	M10	YAR 206-2RF/VE495
SYFL 35 TR/VE495	35		47,5	95	47,6	82,6	110	15,5	M10	YAR 207-2RF/VE495
SYFL 40 TR/VE495	40		48	100,5	49,2	88,9	120	16	M12	YAR 208-2RF/VE495

Resistance to chemical agents

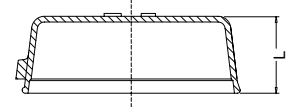
Substance	Stainless Steel	NBR	Polyamide	Polyester
Acetic acid diluted	+	++	++	++
Acetic acid concentrated	-	-	-	-
Acetone	+	-	++	++
Beer	++	++	++	++
Butter	++	++	++	++
Chlorine (dry)	++	++	++	++
Citric acid	++	++	++	++
Cooking fats	++	++	++	++
Ethanol	++	+	++	++
Methanol	++	+	++	++
Milk	++	++	++	++
Potassium hydroxide	++	++	++	++
Soap	++	++	++	++
Sodium hydroxide diluted	+	+	+	+
Sodium hydroxide concentrated	-	-	-	-
Sulphuric acid	+	+	+	+
Water	++	++	++	++
Wine	+	+	+	+

LEGEND
 ++ : Good resistance
 + : Practical tests in operating conditions advisable
 - : Not recommended

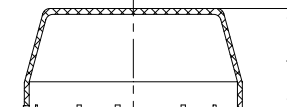
Food Line units are suitable to work in many humid and aggressive environments.

Anyway, the chemical resistance of these materials is heavily affected from percentage of the aggressive, time and temperature of exposure. For any chemical agent it is always recommended to test the unit on field or to carry an immersion test in proper conditions.

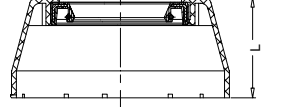
End covers



Fit KC design units
ECY 2XX



Fit L design units
ECL 2XX - Close



ECLB 2XX B - Open

When using open end covers, the speed should not exceed 500 r/min due to combined effect of the bearing sealing system (-2RF) and the garter seal of the end cover.

ECY
Close end cover for Y-Tech housings (black)

Unit designation	d		L mm
	mm	inch	
ECY 204	20		23
ECY 205	25		23
ECY 206	30		25
ECY 207	35		27
ECY 208	40		28,5

ECL
Close end cover for L housings (light-grey)

Unit designation	d		L mm
	mm	inch	
ECL 204	20	3/4	23
ECL 205	25	1	25
ECL 206	30		30
ECL 207	35	1.1/4	32
ECL 208	40	1.1/2	37

ECLB
Open end cover for L housings (light-grey)

Unit designation	d		L mm
	mm	inch	
ECL 204-012 B		3/4	23
ECL 204 B	20		23
ECL 205 B	25		25
ECL 205-100 B		1	25
ECL 206 B	30		30
ECL 207-104 B		1.1/4	32
ECL 207 B	35		32
ECL 208-108 B		1.1/2	37
ECL 208 B	40		37



© SKF is a registered trademark
of the SKF Group.

© Copyright SKF 2003

The contents of this publication are the copyright of the publisher and may not be reproduced (even extracts) unless permission is granted. Every care has been taken to ensure the accuracy of the information contained in this publication but no liability can be accepted for any loss or damage whether direct, indirect or consequential arising out of the use of the information contained herein.