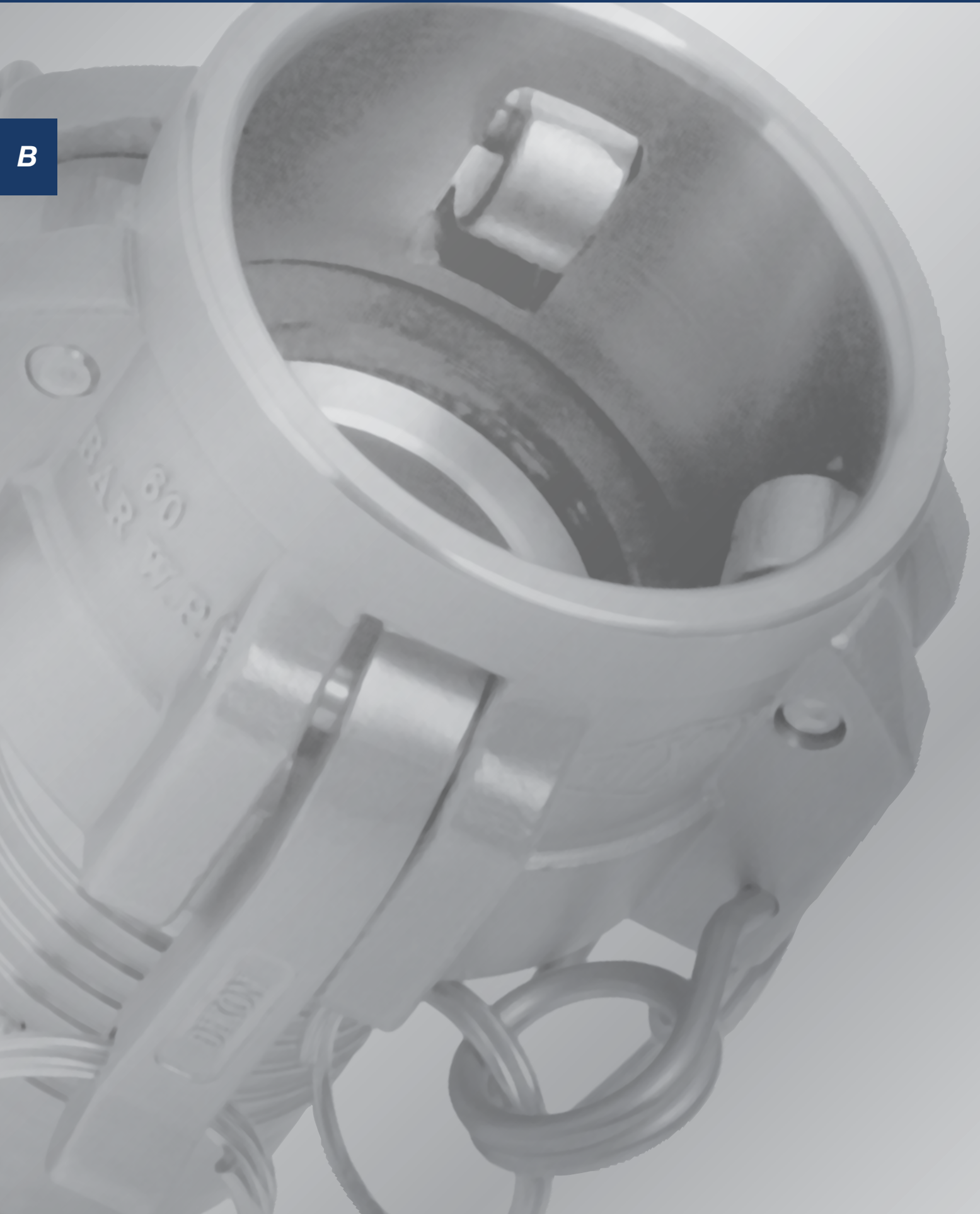


B



# Cam & Groove

**B**

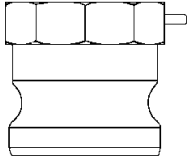
Cam & Groove Line Drawings .....	24-25
Dixon Cam & Groove "MIL-C-27487" / A-A-59326B Specification..	26-45
- Type A .....	26
- Type B .....	27-28
- Type C .....	29-30
- Type D .....	31-32
- Type E .....	33-34
- Type F .....	35
- Dust Plug .....	36
- Dust Cap .....	37-39
- Adapters & Accessories .....	39-45
King Crimp Style .....	46-48
DIN Specification BS EN14420 -7:2004 .....	49
High Pressure Couplings & Adapters .....	50-52
Dry Mates .....	53
Seals & Gaskets .....	54-56

**FOR A FULL RANGE OF INDUSTRIAL HOSES  
TO COMPLEMENT THESE FITTINGS SEE SECTION F**



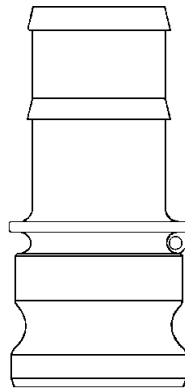
## Cam & Groove Type Line Drawings

**B**



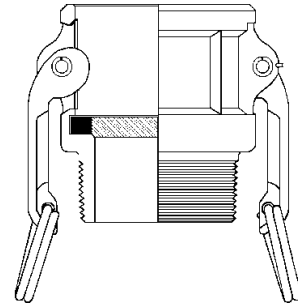
**Type A**

(male adapter x female NPT)



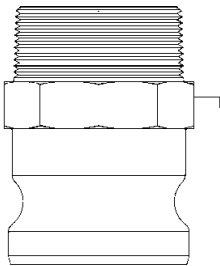
**Type E**

(male adapter x hose shank)



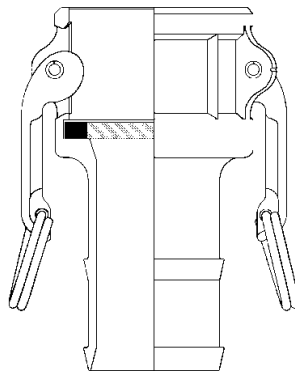
**Type B**

(female adapter x male NPT)



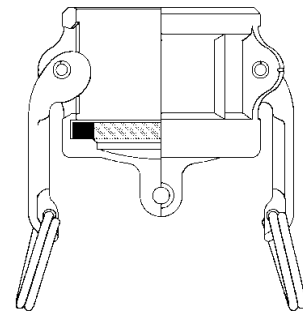
**Type F**

(male adapter x male NPT)



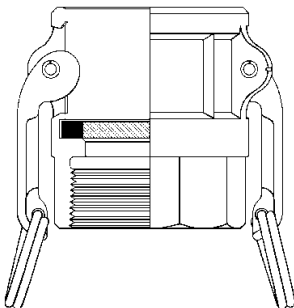
**Type C**

(female coupler x hose shank)



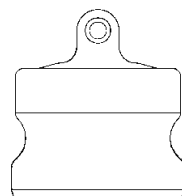
**Type DC\***

(dust cap)



**Type D**

(female coupler x female NPT)



**Type DP\***

(dust plug)

**Note:** Line drawings are representative of the Dixon line of cam and groove.

\* Dust caps and dust plugs are not to be used in pressure applications for safety and environmental reasons.

**WARNING:**  
Under no circumstances should cam and groove couplings be used for compressed air or steam service!

All “Dixon”, “Andrews”, “Boss-Lock” and “EZ Boss-Lock” Cam & Groove couplers and adapters are produced to interchange with all product produced to A-A-59326B.

No standard exists for 1/2”, 5” and 8” fittings, and generally these sizes do not interchange with other manufacturers.

“Andrews” and “Boss-Lock” Cam and Groove Couplings do not interchange in the 8” size. (8” “Andrews” design has 4 cam arms).

DIN Standard Cam & Groove Couplers are produced in accordance with BS EN 14420-7:2004 (formally DIN2828).

Dixon High Pressure couplings will interchange dimensionally with both A-A-59326B and BS EN 14420-7:2004. Couplings for Rubber Hose are available to special order.

Dust Caps and Dust Plugs are **NOT** to be used in pressure applications for safety and environmental reasons.

**Threads:**

Male threads are either BSPT in accordance with BS21/DIN 2999 or NPT in accordance with ANSI/ASME B1.20.1

Female threads are either BSP PL. in accordance with BS2779/DIN ISO 228 or NPT in accordance with ANSI/ASME B1.20.1

PRESSURE RATINGS FOR A-A-59326B COUPLINGS							
SIZE	0.5in DN15	0.75in-2in DN20-DN50	2.5in DN65	3in DN80	4in DN100	5in and 6in DN125-DN150	8in DN200
<b>A-A-59326B BSEN14420</b>	150 psi	250 psi 10 Bar	150 psi 10 Bar	125 psi 10 Bar	100 psi 10 Bar	75 psi	50 psi

Pressure Ratings for Dixon High Pressure Cam & Groove Couplings – 60 Bar all sizes with the exception of 2.5” x 2” Coupler (HPCG65BSPF) which is 100 bar/1450 psi.

Pressure Ratings for Polypropylene Cam & Groove – 100 psi/7 Bar.

Note: All pressure recommendations are based on mating couplings at ambient temperature 21°C (70°F).

**Types:**

**Andrews / Dixon**



**Boss Lock**



**EZ Boss Lock**



## Standard Cam & Groove A-A-59326B

**B**



DIXON CAM & GROOVE TYPE A ADAPTER x NPT THREADS A-A-59326B			
BSP PL. PART NO.	NPT PART NO.	SIZE	MATERIAL
50AALB	50AALN	1/2"	Aluminium
7550AALB	7550AALN	3/4" x 1/2"	Aluminium
75AALB	75AALN	3/4"	Aluminium
100AALB	100AALN	1"	Aluminium
125AALB	125AALN	1 1/4"	Aluminium
150AALB	150AALN	1 1/2"	Aluminium
200AALB	200AALN	2"	Aluminium
250AALB	250AALN	2 1/2"	Aluminium
300AALB	300AALN	3"	Aluminium
400AALB	400AALN	4"	Aluminium
500AALB	500AALN	5"	Aluminium
600AALB	600AALN	6"	Aluminium
800AALB	800AALN	8"	Aluminium
DAL50 AB	DAL50 AN	1/2"	Die Cast Aluminium
DAL7550 AB	DAL7550 AN	3/4" x 1/2"	Die Cast Aluminium
DAL75 AB	DAL75 AN	3/4"	Die Cast Aluminium
DAL100 AB	DAL100 AN	1"	Die Cast Aluminium
DAL125 AB	DAL125 AN	1 1/4"	Die Cast Aluminium
DAL150 AB	DAL150 AN	1 1/2"	Die Cast Aluminium
DAL200 AB	DAL200 AN	2"	Die Cast Aluminium
DAL250 AB	DAL250 AN	2 1/2"	Die Cast Aluminium
DAL300 AB	DAL300 AN	3"	Die Cast Aluminium
DAL400 AB	DAL400 AN	4"	Die Cast Aluminium
50ABRB	50ABRN	1/2"	Brass
7550ABRB	7550ABRN	3/4" x 1/2"	Brass
75ABRB	75ABRN	3/4"	Brass
100ABRB	100ABRN	1"	Brass
125ABRB	125ABRN	1 1/4"	Brass
150ABRB	150ABRN	1 1/2"	Brass
200ABRB	200ABRN	2"	Brass
250ABRB	250ABRN	2 1/2"	Brass
300ABRB	300ABRN	3"	Brass
400ABRB	400ABRN	4"	Brass
500ABRB	500ABRN	5"	Brass
600ABRB	600ABRN	6"	Brass
50ASSB	50ASSN	1/2"	Stainless Steel
7550ASSB	7550ASSN	3/4" x 1/2"	Stainless Steel
75ASSB	75ASSN	3/4"	Stainless Steel
100ASSB	100ASSN	1"	Stainless Steel
125ASSB	125ASSN	1 1/4"	Stainless Steel
150ASSB	150ASSN	1 1/2"	Stainless Steel
200ASSB	200ASSN	2"	Stainless Steel
250ASSB	250ASSN	2 1/2"	Stainless Steel
300ASSB	300ASSN	3"	Stainless Steel
400ASSB	400ASSN	4"	Stainless Steel
500ASSB	500ASSN	5"	Stainless Steel
600ASSB	600ASSN	6"	Stainless Steel
7550APPB	7550APPN	3/4" x 1/2"	Polypropylene
75APPB	75APPN	3/4"	Polypropylene
100APPB	100APPN	1"	Polypropylene
125APPB	125APPN	1 1/2" x 1 1/4"	Polypropylene
150APPB	150APPN	1 1/2"	Polypropylene
200APPB	200APPN	2"	Polypropylene
300APPB	300APPN	3"	Polypropylene
400APPB	400APPN	4"	Polypropylene

## DIXON CAM & GROOVE TYPE B COUPLER x BSPT & NPT THREADS A-A-59326B



BSPT PART NO.	NPT PART NO.	SIZE	MATERIAL
50BALB	50BALN	1/2"	Aluminium
75BALB	75BALN	3/4"	Aluminium
100BALB	100BALN	1"	Aluminium
125BALB	125BALN	1 1/4"	Aluminium
150BALB	150BALN	1 1/2"	Aluminium
200BALB	200BALN	2"	Aluminium
250BALB	250BALN	2 1/2"	Aluminium
300BALB	300BALN	3"	Aluminium
400BALB	400BALN	4"	Aluminium
500BALB	500BALN	5"	Aluminium
600BALB	600BALN	6"	Aluminium
DAL50 BB	DAL50 BN	1/2"	Die Cast Aluminium
DAL75 BB	DAL75 BN	3/4"	Die Cast Aluminium
DAL100 BB	DAL100 BN	1"	Die Cast Aluminium
DAL125 BB	DAL125 BN	1 1/4"	Die Cast Aluminium
DAL150 BB	DAL150 BN	1 1/2"	Die Cast Aluminium
DAL200 BB	DAL200 BN	2"	Die Cast Aluminium
DAL250 BB	DAL250 BN	2 1/2"	Die Cast Aluminium
DAL300 BB	DAL300 BN	3"	Die Cast Aluminium
DAL400 BB	DAL400 BN	4"	Die Cast Aluminium
50BBRB	50BBRN	1/2"	Brass
75BBRB	75BBRN	3/4"	Brass
100BBRB	100BBRN	1"	Brass
125BBRB	125BBRN	1 1/4"	Brass
150BBRB	150BBRN	1 1/2"	Brass
200BBRB	200BBRN	2"	Brass
250BBRB	250BBRN	2 1/2"	Brass
300BBRB	300BBRN	3"	Brass
400BBRB	400BBRN	4"	Brass
500BBRB	500BBRN	5"	Brass
600BBRB	600BBRN	6"	Brass
50BSSB	50BSSN	1/2"	Stainless Steel
75BSSB	75BSSN	3/4"	Stainless Steel
100BSSB	100BSSN	1"	Stainless Steel
125BSSB	125BSSN	1 1/4"	Stainless Steel
150BSSB	150BSSN	1 1/2"	Stainless Steel
200BSSB	200BSSN	2"	Stainless Steel
250BSSB	250BSSN	2 1/2"	Stainless Steel
300BSSB	300BSSN	3"	Stainless Steel
400BSSB	400BSSN	4"	Stainless Steel
500BSSB	500BSSN	5"	Stainless Steel
600BSSB	600BSSN	6"	Stainless Steel
75BPPB	75BPPN	3/4"	Polypropylene
100BPPB	100BPPN	1"	Polypropylene
125BPPB	125BPPN	1 1/2" x 1 1/4"	Polypropylene
150BPPB	150BPPN	1 1/2"	Polypropylene
200BPPB	200BPPN	2"	Polypropylene
300BPPB	300BPPN	3"	Polypropylene



## "ANDREWS" TYPE B - 'REDUCING FEMALE COUPLER x MALE THREAD'

PART NO.	SIZE	MATERIAL	THREAD AVAILABLE
1510-B-AL	1 1/2" x 1"	Aluminium	NPT
2015-B-AL	2" x 1 1/2"	Aluminium	NPT
3020-B-AL	3" x 2"	Aluminium	NPT
3040-B-AL	3" x 4"	Aluminium	NPT
4030-B-AL	4" x 3"	Aluminium	NPT

Also available in Stainless Steel upon request

**B**



## “BOSS-LOCK” TYPE B - ‘FEMALE COUPLER x MALE THREAD’

PART NO.	SIZE	THREAD AVAILABLE	MATERIAL
AB050	3/4" x 1/2"	NPT	Aluminium
AB075	3/4"	NPT	Aluminium
AB100	1"	NPT	Aluminium
AB125	1 1/4"	NPT	Aluminium
AB150	1 1/2"	NPT	Aluminium
AB200	2"	NPT	Aluminium
AB250	2 1/2"***	NPT	Aluminium
AB300	3"	NPT	Aluminium
AB400	4"	NPT	Aluminium
AB600	6"	NPT	Aluminium
BB050	3/4" x 1/2"	NPT	Brass
BB075	3/4"	NPT	Brass
BB100	1"	NPT	Brass
BB125	1 1/4"	NPT	Brass
BB150	1 1/2"	NPT	Brass
BB200	2"	NPT	Brass
BB250	2 1/2"***	NPT	Brass
BB300	3"	NPT	Brass
BB400	4"	NPT	Brass
BB600	6"	NPT	Brass
RB050BL	3/4" x 1/2"	NPT	Stainless Steel
RB075BL	3/4"	NPT	Stainless Steel
RB100BL	1"	NPT	Stainless Steel
RB125BL	1 1/4"	NPT	Stainless Steel
RB150BL	1 1/2"	NPT	Stainless Steel
RB200BL	2"	NPT	Stainless Steel
RB300BL	3"	NPT	Stainless Steel
RB400BL	4"	NPT	Stainless Steel
IB075	3/4"	NPT	Plated Malleable Iron
IB100	1"	NPT	Plated Malleable Iron
IB150	1 1/2"	NPT	Plated Malleable Iron
IB200	2"	NPT	Plated Malleable Iron
IB300	3"	NPT	Plated Malleable Iron
IB400	4"	NPT	Plated Malleable Iron

\*\* “Boss-Lock” Couplers with BSPT threads are available to special order / minimum quantity may apply with the exception of 2 1/2" which is which is only available in NPT.

## “EZ BOSS-LOCK” TYPE B - ‘FEMALE COUPLER x MALE’

PART NO.	SIZE	THREAD AVAILABLE	MATERIAL
RB050EZ	3/4" x 1/2"	NPT	Stainless Steel
RB075EZ	3/4"	NPT	Stainless Steel
RB100EZ	1"	NPT	Stainless Steel
RB125EZ	1 1/4"	NPT	Stainless Steel
RB150EZ	1 1/2"	NPT	Stainless Steel
RB200EZ	2"	NPT	Stainless Steel
RB300EZ	3"	NPT	Stainless Steel
RB400EZ	4"	NPT	Stainless Steel
RB600EZ	6"	NPT	Stainless Steel
RB050EZA	3/4" x 1/2"	BSPT	Stainless Steel
RB075EZA	3/4"	BSPT	Stainless Steel
RB100EZA	1"	BSPT	Stainless Steel
RB125EZA	1 1/4"	BSPT	Stainless Steel
RB150EZA	1 1/2"	BSPT	Stainless Steel
RB200EZA	2"	BSPT	Stainless Steel
RB300EZA	3"	BSPT	Stainless Steel
RB400EZA	4"	BSPT	Stainless Steel
RB600EZA	6"	BSPT	Stainless Steel



## DIXON CAM & GROOVE TYPE C COUPLER A-A-59326B



PART NO.	SIZE	MATERIAL
50CAL	1/2"	Aluminium
75CAL	3/4"	Aluminium
100CAL	1"	Aluminium
125CAL	1 1/4"	Aluminium
150CAL	1 1/2"	Aluminium
200CAL	2"	Aluminium
250CAL	2 1/2"	Aluminium
300CAL	3"	Aluminium
400CAL	4"	Aluminium
500CAL	5"	Aluminium
600CAL	6"	Aluminium
800CAL	8"	Aluminium
DAL50C	1/2"	Die Cast Aluminium
DAL75C	3/4"	Die Cast Aluminium
DAL100C	1"	Die Cast Aluminium
DAL125C	1 1/4"	Die Cast Aluminium
DAL150C	1 1/2"	Die Cast Aluminium
DAL200C	2"	Die Cast Aluminium
DAL250C	2 1/2"	Die Cast Aluminium
DAL300C	3"	Die Cast Aluminium
DAL400C	4"	Die Cast Aluminium
DAL600C	6"	Die Cast Aluminium
50CBR	1/2"	Brass
75CBR	3/4"	Brass
100CBR	1"	Brass
125CBR	1 1/4"	Brass
150CBR	1 1/2"	Brass
200CBR	2"	Brass
250CBR	2 1/2"	Brass
300CBR	3"	Brass
400CBR	4"	Brass
500CBR	5"	Brass
600CBR	6"	Brass
50CSS	1/2"	Stainless Steel
75CSS	3/4"	Stainless Steel
100CSS	1"	Stainless Steel
125CSS	1 1/4"	Stainless Steel
150CSS	1 1/2"	Stainless Steel
200CSS	2"	Stainless Steel
250CSS	2 1/2"	Stainless Steel
300CSS	3"	Stainless Steel
400CSS	4"	Stainless Steel
500CSS	5"	Stainless Steel
600CSS	6"	Stainless Steel
75CPP	3/4"	Polypropylene
100CPP	1"	Polypropylene
125CPP	1 1/2" x 1 1/4"	Polypropylene
150CPP	1 1/2"	Polypropylene
200CPP	2"	Polypropylene
300CPP	3"	Polypropylene
400CPP	4"	Polypropylene



"ANDREWS" TYPE C - 'REDUCING FEMALE COUPLER x HOSE TAIL'		
PART NO.	SIZE	MATERIAL
3020-C-AL	3" x 2"	Aluminium
3040-C-AL	3" x 4"	Aluminium
4030-C-AL	4" x 3"	Aluminium

Also available in Stainless Steel upon request



**B**



"BOSS-LOCK" TYPE C - 'FEMALE COUPLER x HOSE TAIL'				
PART NO.	SIZE	MATERIAL		
AC075	3/4"	Aluminium		
AC100	1"	Aluminium		
AC125	1 1/4"	Aluminium		
AC150	1 1/2"	Aluminium		
AC200	2"	Aluminium		
AC250	2 1/2"	Aluminium		
AC300	3"	Aluminium		
AC400	4"	Aluminium		
AC600	6"	Aluminium		
AC800	8"	Aluminium		
BC075	3/4"	Brass		
BC100	1"	Brass		
BC125	1 1/4"	Brass		
BC150	1 1/2"	Brass		
BC200	2"	Brass		
BC250	2 1/2"	Brass		
BC300	3"	Brass		
BC400	4"	Brass		
BC600	6"	Brass		
RC050BL	3/4" x 1 1/2"	Stainless Steel		
RC075BL	3/4"	Stainless Steel		
RC100BL	1"	Stainless Steel		
RC125BL	1 1/4"	Stainless Steel		
RC150BL	1 1/2"	Stainless Steel		
RC200BL	2"	Stainless Steel		
RC300BL	3"	Stainless Steel		
RC400BL	4"	Stainless Steel		
IC075	3/4"	Plated Malleable Iron		
IC100	1"	Plated Malleable Iron		
IC150	1 1/2"	Plated Malleable Iron		
IC200	2"	Plated Malleable Iron		
IC300	3"	Plated Malleable Iron		
IC400	4"	Plated Malleable Iron		
IC600	6"	Plated Malleable Iron		



"EZ BOSS-LOCK" TYPE C - 'FEMALE COUPLER x HOSE TAIL'				
PART NO.	SIZE	MATERIAL		
RC050EZ	1/2"	Stainless Steel		
RC075EZ	3/4"	Stainless Steel		
RC100EZ	1"	Stainless Steel		
RC125EZ	1 1/4"	Stainless Steel		
RC200EZ	2"	Stainless Steel		
RC300EZ	3"	Stainless Steel		
RC400EZ	4"	Stainless Steel		
RC600EZ	6"	Stainless Steel		

Note: All "Boss-Lock" Couplers come with SAFETY CLIPS. \* "Andrews" and "Boss-Lock" Cam and Groove Couplings **DO NOT INTERCHANGE IN THE 8" SIZE**. The 8" "Boss-Lock" design has 2 cam arms. The 8" "Boss-Lock" were designed to interchange with 8" Cam and Groove couplings manufactured by others.



"BOSS-LOCK" TYPE C - 'COUPLER x HOSE TAIL WITH FERRULE'				
PART NO.	SIZE	MINIMUM HOSE O.D.	MAXIMUM HOSE O.D.	MATERIAL
RC075EZ-70	3/4"	1 6/64"	1 22/64"	Stainless Steel
RC100EZ-20	1"	1 29/64"	1 35/64"	Stainless Steel
RC100EZ-70	1"	1 9/16"	1 11/16"	Stainless Steel

Developed specifically for chemical transport hoses having Crosslinked Polyethylene (XLPE) or Ultra High Molecular Weight Polyethylene (UHMWPE) tubes. Swaged "Boss-Lock" provides you with a permanently attached Cam and Groove fitting when superior coupling retention is required. In testing tank transport hoses from a wide variety of manufacturers, the Swaged "Boss-Lock" fitting proved itself to be the clear winner in overall performance.

Fittings are also available on special order for other sizes or hoses O.D.'s. Consult Dixon for pricing and availability of the special equipment required for installation.

## DIXON CAM & GROOVE TYPE D COUPLER x BSP PL. & NPT THREADS A-A-59326B

BSP PL. PART NO.	NPT PART NO.	SIZE	MATERIAL
50DALB	50DALN	1/2"	Aluminium
75DALB	75DALN	3/4"	Aluminium
100DALB	100DALN	1"	Aluminium
125DALB	125DALN	1 1/4"	Aluminium
150DALB	150DALN	1 1/2"	Aluminium
200DALB	200DALN	2"	Aluminium
250DALB	250DALN	2 1/2"	Aluminium
300DALB	300DALN	3"	Aluminium
400DALB	400DALN	4"	Aluminium
500DALB	500DALN	5"	Aluminium
600DALB	600DALN	6"	Aluminium
800DALB	800DALN	8"	Aluminium
DAL50 DB	DAL50 DN	1/2"	Die Cast Aluminium
DAL75 DB	DAL75 DN	3/4"	Die Cast Aluminium
DAL100 DB	DAL100 DN	1"	Die Cast Aluminium
DAL125 DB	DAL125 DN	1 1/4"	Die Cast Aluminium
DAL150 DB	DAL150 DN	1 1/2"	Die Cast Aluminium
DAL200 DB	DAL200 DN	2"	Die Cast Aluminium
DAL250 DB	DAL250 DN	2 1/2"	Die Cast Aluminium
DAL300 DB	DAL300 DN	3"	Die Cast Aluminium
DAL400 DB	DAL400 DN	4"	Die Cast Aluminium
50DBRB	50DBRN	1/2"	Brass
75DBRB	75DBRN	3/4"	Brass
100DBRB	100DBRN	1"	Brass
125DBRB	125DBRN	1 1/4"	Brass
150DBRB	150DBRN	1 1/2"	Brass
200DBRB	200DBRN	2"	Brass
250DBRB	250DBRN	2 1/2"	Brass
300DBRB	300DBRN	3"	Brass
400DBRB	400DBRN	4"	Brass
500DBRB	500DBRN	5"	Brass
600DBRB	600DBRN	6"	Brass
50DSSB	50DSSN	1/2"	Stainless Steel
75DSSB	75DSSN	3/4"	Stainless Steel
100DSSB	100DSSN	1"	Stainless Steel
125DSSB	125DSSN	1 1/4"	Stainless Steel
150DSSB	150DSSN	1 1/2"	Stainless Steel
200DSSB	200DSSN	2"	Stainless Steel
250DSSB	250DSSN	2 1/2"	Stainless Steel
300DSSB	300DSSN	3"	Stainless Steel
400DSSB	400DSSN	4"	Stainless Steel
500DSSB	500DSSN	5"	Stainless Steel
600DSSB	600DSSN	6"	Stainless Steel
75DPPB	75DPPN	3/4"	Polypropylene
100DPPB	100DPPN	1"	Polypropylene
125DPPB	125DPPN	1 1/2" x 1 1/4"	Polypropylene
150DPPB	150DPPN	1 1/2"	Polypropylene
200DPPB	200DPPN	2"	Polypropylene
300DPPB	300DPPN	3"	Polypropylene
400DPPB	400DPPN	4"	Polypropylene

## "ANDREWS" TYPE D - 'REDUCER COUPLER x FEMALE THREAD'

PART NO.	SIZE	THREAD AVAILABLE	MATERIAL
1510-D-AL	1 1/2" x 1"	NPT	Aluminium
2015-D-AL	2" x 1 1/2"	NPT	Aluminium
3020-D-AL	3" x 2"	NPT	Aluminium
4030-D-AL	4" x 3"	NPT	Aluminium
4030-D-BR	4" x 3"	NPT	Brass
2015-D-SS	2" x 1 1/2"	NPT	Stainless Steel

\* "Andrews" and "Boss-Lock" Cam and Groove Couplings **DO NOT INTERCHANGE IN THE 8" SIZE.**  
 The 8" "Boss-Lock" design has 2 cam arms. The 8" "Boss-Lock" were designed to interchange with 8" Cam and Groove couplings manufactured by others.

**B**



"BOSS-LOCK" TYPE D 'FEMALE COUPLER x FEMALE THREAD'			
PART NO.	SIZE	THREAD AVAILABLE	MATERIAL
AD050	3/4" x 1/2"	NPT	Aluminium
AD075	3/4"	NPT	Aluminium
AD100	1"	NPT	Aluminium
AD125	1 1/4"	NPT	Aluminium
AD150	1 1/2"	NPT	Aluminium
AD200	2"	NPT	Aluminium
AD250	2 1/2"	NPT	Aluminium
AD300	3"	NPT	Aluminium
AD400	4"	NPT	Aluminium
AD600	6"	NPT	Aluminium
AD800	8"	NPT	Aluminium
BD050	3/4" x 1/2"	NPT	Brass
BD075	3/4"	NPT	Brass
BD100	1"	NPT	Brass
BD125	1 1/4"	NPT	Brass
BD150	1 1/2"	NPT	Brass
BD200	2"	NPT	Brass
BD250	2 1/2"	NPT	Brass
BD300	3"	NPT	Brass
BD400	4"	NPT	Brass
BD600	6"	NPT	Brass
RD050	3/4" x 1/2"	NPT	Stainless Steel
RD075	3/4"	NPT	Stainless Steel
RD100	1"	NPT	Stainless Steel
RD125	1 1/4"	NPT	Stainless Steel
RD150	1 1/2"	NPT	Stainless Steel
RD200	2"	NPT	Stainless Steel
RD300	3"	NPT	Stainless Steel
RD400	4"	NPT	Stainless Steel
ID075	3/4"	NPT	Plated Malleable Iron
ID100	1"	NPT	Plated Malleable Iron
ID150	1 1/2"	NPT	Plated Malleable Iron
ID200	2"	NPT	Plated Malleable Iron
ID300	3"	NPT	Plated Malleable Iron
ID400	4"	NPT	Plated Malleable Iron
ID600	6"	NPT	Plated Malleable Iron

\*\* "Boss-Lock" Couplers with BSPT threads are available to special order / minimum quantity may apply with the exception of 2 1/2" which is only available in NPT.

## "EZ BOSS-LOCK" TYPE D - 'FEMALE COUPLER x FEMALE THREAD'



PART NO.	SIZE	THREAD AVAILABLE	MATERIAL
RD050EZ	1/2"	NPT	Stainless Steel
RD075EZ	3/4"	NPT	Stainless Steel
RD100EZ	1"	NPT	Stainless Steel
RD125EZ	1 1/4"	NPT	Stainless Steel
RD150EZ	1 1/2"	NPT	Stainless Steel
RD200EZ	2"	NPT	Stainless Steel
RD300EZ	3"	NPT	Stainless Steel
RD400EZ	4"	NPT	Stainless Steel

Note: "Boss-Lock" Couplers with BSPT threads are available to special order.

All "Boss-Lock" Couplers come with SAFETY CLIPS. \* "Andrews" and "Boss-Lock" Cam and Groove Couplings **DO NOT INTERCHANGE IN THE 8" SIZE**. The 8"

"Boss-Lock" design has 2 cam arms. The 8" "Boss-Lock" were designed to interchange with 8" Cam and Groove couplings manufactured by others.



DIXON CAM & GROOVE TYPE E ADAPTER A-A-59326B		
PART NO.	SIZE	MATERIAL
50EAL	1/2"	Aluminium
75EAL	3/4"	Aluminium
100EAL	1"	Aluminium
125EAL	1 1/4"	Aluminium
150EAL	1 1/2"	Aluminium
200EAL	2"	Aluminium
250EAL	2 1/2"	Aluminium
300EAL	3"	Aluminium
400EAL	4"	Aluminium
500EAL	5"	Aluminium
600EAL	6"	Aluminium
800EAL	8"	Aluminium
DAL50 E	1/2"	Die Cast Aluminium
DAL75 E	3/4"	Die Cast Aluminium
DAL100 E	1"	Die Cast Aluminium
DAL125 E	1 1/4"	Die Cast Aluminium
DAL150 E	1 1/2"	Die Cast Aluminium
DAL200 E	2"	Die Cast Aluminium
DAL250 E	2 1/2"	Die Cast Aluminium
DAL300 E	3"	Die Cast Aluminium
DAL400 E	4"	Die Cast Aluminium
50EBR	1/2"	Brass
75EBR	3/4"	Brass
100EBR	1"	Brass
125EBR	1 1/4"	Brass
150EBR	1 1/2"	Brass
200EBR	2"	Brass
250EBR	2 1/2"	Brass
300EBR	3"	Brass
400EBR	4"	Brass
500EBR	5"	Brass
600EBR	6"	Brass
50ESS	1/2"	Stainless Steel
75ESS	3/4"	Stainless Steel
100ESS	1"	Stainless Steel
125ESS	1 1/4"	Stainless Steel
150ESS	1 1/2"	Stainless Steel
200ESS	2"	Stainless Steel
250ESS	2 1/2"	Stainless Steel
300ESS	3"	Stainless Steel
400ESS	4"	Stainless Steel
500ESS	5"	Stainless Steel
600ESS	6"	Stainless Steel
75EPP	3/4"	Polypropylene
100EPP	1"	Polypropylene
125EPP	1 1/2" x 1 1/4"	Polypropylene
150EPP	1 1/2"	Polypropylene
200EPP	2"	Polypropylene
300EPP	3"	Polypropylene
400EPP	4"	Polypropylene

\* "Andrews" and "Boss-Lock" Cam and Groove Couplings  
**DO NOT INTERCHANGE IN THE 8" SIZE** The 8" "Andrews" design has 4 cam arms.



B

## “ANDREWS” TYPE E - ‘REDUCER MALE x HOSE TAIL’

PART NO.	SIZE	MATERIAL
4030-E-AL	4" x 3"	Aluminium



## “BOSS-LOCK” TYPE E - ‘ADAPTER x HOSE TAIL WITH FERRULE’

PART NO.	SIZE	MINIMUM HOSE O.D.	MAXIMUM HOSE O.D.	MATERIAL
RE075-1370	3/4"	1 <sup>6</sup> / <sub>64</sub> "	1 <sup>22</sup> / <sub>64</sub> "	Stainless Steel
RE100-1620	1"	1 <sup>29</sup> / <sub>64</sub> "	1 <sup>35</sup> / <sub>64</sub> "	Stainless Steel
RE100-1770	1"	1 <sup>9</sup> / <sub>16</sub> "	1 <sup>11</sup> / <sub>16</sub> "	Stainless Steel

Developed specifically for chemical transport hoses having Crosslinked Polyethylene (XPLE) or Ultra HIGH Molecular Weight Polyethylene (UHMWPE) tubes. Swaged “Boss-Lock” provides you with a permanently attached Cam and Groove fitting when superior coupling retention is required.

In testing tank transport hoses from a wide variety of manufacturers, the Swaged “Boss-Lock” fitting proved itself to be superior in overall performance.

Fittings are also available on special order for other sizes or hoses O.D.'s. Consult the factory for pricing and availability. Consult Dixon for pricing and availability of the special equipment required for installation.

## DIXON CAM & GROOVE TYPE F ADAPTER X BSPT & NPT A-A-59326B



BSPT PART NO.	NPT PART NO.	SIZE	MATERIAL
50FALB	50FALN	1/2"	Aluminium
75FALB	75FALN	3/4"	Aluminium
100FALB	100FALN	1"	Aluminium
125FALB	125FALN	1 1/4"	Aluminium
150FALB	150FALN	1 1/2"	Aluminium
200FALB	200FALN	2"	Aluminium
250FALB	250FALN	2 1/2"	Aluminium
300FALB	300FALN	3"	Aluminium
400FALB	400FALN	4"	Aluminium
500FALB	500FALN	5"	Aluminium
600FALB	600FALN	6"	Aluminium
DAL50 FB	DAL50 FN	1/2"	Die Cast Aluminium
DAL75 FB	DAL75 FN	3/4"	Die Cast Aluminium
DAL100 FB	DAL100 FN	1"	Die Cast Aluminium
DAL125 FB	DAL125 FN	1 1/4"	Die Cast Aluminium
DAL150 FB	DAL150 FN	1 1/2"	Die Cast Aluminium
DAL200 FB	DAL200 FN	2"	Die Cast Aluminium
DAL250 FB	DAL250 FN	2 1/2"	Die Cast Aluminium
DAL300 FB	DAL300 FN	3"	Die Cast Aluminium
DAL400 FB	DAL400 FN	4"	Die Cast Aluminium
50FBRB	50FBRN	1/2"	Brass
75FBRB	75FBRN	3/4"	Brass
100FBRB	100FBRN	1"	Brass
125FBRB	125FBRN	1 1/4"	Brass
150FBRB	150FBRN	1 1/2"	Brass
200FBRB	200FBRN	2"	Brass
250FBRB	250FBRN	2 1/2"	Brass
300FBRB	300FBRN	3"	Brass
400FBRB	400FBRN	4"	Brass
500FBRB	500FBRN	5"	Brass
600FBRB	600FBRN	6"	Brass
50FSSB	50FSSN	1/2"	Stainless Steel
75FSSB	75FSSN	3/4"	Stainless Steel
100FSSB	100FSSN	1"	Stainless Steel
125FSSB	125FSSN	1 1/4"	Stainless Steel
150FSSB	150FSSN	1 1/2"	Stainless Steel
200FSSB	200FSSN	2"	Stainless Steel
250FSSB	250FSSN	2 1/2"	Stainless Steel
300FSSB	300FSSN	3"	Stainless Steel
400FSSB	400FSSN	4"	Stainless Steel
500FSSB	500FSSN	5"	Stainless Steel
600FSSB	600FSSN	6"	Stainless Steel
75FPPB	75FPPN	3/4"	Polypropylene
100FPPB	100FPPN	1"	Polypropylene
125FPPB	125FPPN	1 1/2" x 1 1/4"	Polypropylene
150FPPB	150FPPN	1 1/2"	Polypropylene
200FPPB	200FPPN	2"	Polypropylene
300FPPB	300FPPN	3"	Polypropylene
400FPPB	400FPPN	4"	Polypropylene



### "ANDREWS" TYPE F - 'REDUCER ADAPTER x MALE THREAD'

PART NO.	SIZE	THREAD AVAILABLE	MATERIAL
3020-F-SS	3" x 2"	NPT	Stainless Steel

**B**



## DIXON CAM & GROOVE TYPE DUST PLUG ADAPTER A-A-59326B

PART NO.	SIZE	MATERIAL
50DPAL	1/2"	Aluminium
75DPAL	3/4"	Aluminium
100DPAL	1"	Aluminium
125DPAL	1 1/4"	Aluminium
150DPAL	1 1/2"	Aluminium
200DPAL	2"	Aluminium
250DPAL	2 1/2"	Aluminium
300DPAL	3"	Aluminium
400DPAL	4"	Aluminium
500DPAL	5"	Aluminium
600DPAL	6"	Aluminium
800DPAL	8"	Aluminium
DAL50 DP	1/2"	Die Cast Aluminium
DAL75 DP	3/4"	Die Cast Aluminium
DAL100 DP	1"	Die Cast Aluminium
DAL125 DP	1 1/4"	Die Cast Aluminium
DAL150 DP	1 1/2"	Die Cast Aluminium
DAL200 DP	2"	Die Cast Aluminium
DAL250 DP	2 1/2"	Die Cast Aluminium
DAL300 DP	3"	Die Cast Aluminium
DAL400 DP	4"	Die Cast Aluminium
50DPBR	1/2"	Brass
75DPBR	3/4"	Brass
100DPBR	1"	Brass
125DPBR	1 1/4"	Brass
150DPBR	1 1/2"	Brass
200DPBR	2"	Brass
250DPBR	2 1/2"	Brass
300DPBR	3"	Brass
400DPBR	4"	Brass
500DPBR	5"	Brass
600DPBR	6"	Brass
50DPSS	1/2"	Stainless Steel
75DPSS	3/4"	Stainless Steel
100DPSS	1"	Stainless Steel
125DPSS	1 1/4"	Stainless Steel
150DPSS	1 1/2"	Stainless Steel
200DPSS	2"	Stainless Steel
250DPSS	2 1/2"	Stainless Steel
300DPSS	3"	Stainless Steel
400DPSS	4"	Stainless Steel
500DPSS	5"	Stainless Steel
600DPSS	6"	Stainless Steel
75DPPP	3/4"	Polypropylene
100DPPP	1"	Polypropylene
150DPPP	1 1/2"	Polypropylene
200DPPP	2"	Polypropylene
300DPPP	3"	Polypropylene
400DPPP	4"	Polypropylene

## DIXON CAM & GROOVE TYPE DUST CAP COUPLER A-A-59326B



PART NO.	SIZE	MATERIAL
50DCAL	1/2"	Aluminium
75DCAL	3/4"	Aluminium
100DCAL	1"	Aluminium
125DCAL	1 1/4"	Aluminium
150DCAL	1 1/2"	Aluminium
200DCAL	2"	Aluminium
250DCAL	2 1/2"	Aluminium
300DCAL	3"	Aluminium
400DCAL	4"	Aluminium
500DCAL	5"	Aluminium
600DCAL	6"	Aluminium
800DCAL	8"	Aluminium
DAL50DC	1/2"	Die Cast Aluminium
DAL75DC	3/4"	Die Cast Aluminium
DAL100DC	1"	Die Cast Aluminium
DAL125DC	1 1/4"	Die Cast Aluminium
DAL150DC	1 1/2"	Die Cast Aluminium
DAL200DC	2"	Die Cast Aluminium
DAL250DC	2 1/2"	Die Cast Aluminium
DAL300DC	3"	Die Cast Aluminium
DAL400DC	4"	Die Cast Aluminium
50DCBR	1/2"	Brass
75DCBR	3/4"	Brass
100DCBR	1"	Brass
125DCBR	1 1/4"	Brass
150DCBR	1 1/2"	Brass
200DCBR	2"	Brass
250DCBR	2 1/2"	Brass
300DCBR	3"	Brass
400DCBR	4"	Brass
500DCBR	5"	Brass
600DCBR	6"	Brass
50DCSS	1/2"	Stainless Steel
75DCSS	3/4"	Stainless Steel
100DCSS	1"	Stainless Steel
125DCSS	1 1/4"	Stainless Steel
150DCSS	1 1/2"	Stainless Steel
200DCSS	2"	Stainless Steel
250DCSS	2 1/2"	Stainless Steel
300DCSS	3"	Stainless Steel
400DCSS	4"	Stainless Steel
500DCSS	5"	Stainless Steel
600DCSS	6"	Stainless Steel
75DCPP	3/4"	Polypropylene
100DCPP	1"	Polypropylene
150DCPP	1 1/2"	Polypropylene
200DCPP	2"	Polypropylene
300DCPP	3"	Polypropylene
400DCPP	4"	Polypropylene

Note: All "Boss-Lock" Couplers come with SAFETY CLIPS. \* "Andrews" and "Boss-Lock"

Cam and Groove Couplings **DO NOT INTERCHANGE IN THE 8" SIZE.**

The 8" "Boss-Lock" design has 2 cam arms. The 8" "Boss-Lock" were designed to interchange with 8" Cam and Groove couplings manufactured by others.



**B**



## "ANDREWS" LOCKABLE DUST CAP

PART NO.	SIZE	MATERIAL
200-DC-L-AL	2"	Aluminium
300-DC-L-AL	3"	Aluminium
400-DC-L-AL	4"	Aluminium
600-DC-L-AL	6"	Aluminium
200-DC-L-BR	2"	Brass
300-DC-L-BR	3"	Brass
400-DC-L-BR	4"	Brass
200DC-L-SS	2"	Stainless Steel
300DC-L-SS	3"	Stainless Steel



## LOCKING / PADDLE HANDLES FOR "ANDREWS" DUST CAP

PART NO.	COUPLER SIZE	DESCRIPTION
200-LH-BR	2"	Locking Handle, Brass
300-LH-BR	3"	Locking Handle, Brass
400-LH-BR	4"	Locking Handle, Brass
300H-PADBR	3" and 4"	Paddle Handle, Brass

## "BOSS-LOCK" - 'DUST CAPS'



PART NO.	SIZE	MATERIAL
AH075	3/4"	Aluminium
AH100	1"	Aluminium
AH125	1 1/4"	Aluminium
AH150	1 1/2"	Aluminium
AH200	2"	Aluminium
AH250	2 1/2"	Aluminium
AH300	3"	Aluminium
AH400	4"	Aluminium
AH600	6"	Aluminium
BH075	3/4"	Brass
BH100	1"	Brass
BH125	1 1/4"	Brass
BH150	1 1/2"	Brass
BH200	2"	Brass
BH250	2 1/2"***	Brass
BH300	3"	Brass
BH400	4"	Brass
BH600	6"	Brass
RH075BL	3/4"	Stainless Steel
RH100BL	1"	Stainless Steel
RH125BL	1 1/4"	Stainless Steel
RH150BL	1 1/2"	Stainless Steel
RH200BL	2"	Stainless Steel
RH300BL	3"	Stainless Steel
RH400BL	4"	Stainless Steel
IH100	1"	Plated Malleable Iron
IH150	1 1/2"	Plated Malleable Iron
IH200	2"	Plated Malleable Iron
IH300	3"	Plated Malleable Iron
IH400	4"	Plated Malleable Iron
IH600	6"	Plated Malleable Iron



"EZ BOSS-LOCK" – 'DUST CAPS'		
PART NO.	SIZE	MATERIAL
RH075EZ	3/4"	Stainless Steel
RH100EZ	1"	Stainless Steel
RH125EZ	1 1/4"	Stainless Steel
RH150EZ	1 1/2"	Stainless Steel
RH200EZ	2"	Stainless Steel
RH300EZ	3"	Stainless Steel
RH400EZ	4"	Stainless Steel
RH600EZ	6"	Stainless Steel

Note: All "Boss-Lock" Couplers come with SAFETY CLIPS.

\* "Andrews" and "Boss-Lock" Cam and Groove Couplings

**DO NOT INTERCHANGE IN THE 8" SIZE.** The 8" "Boss-Lock" design has 2 cam arms.

The 8" "Boss-Lock" were designed to interchange with 8" Cam and Groove couplings manufactured by others.



"EZ BOSS-LOCK" COUPLER x ADAPTER		
PART NO.	SIZE	MATERIAL
RDA3020EZ	3" x 2"	Stainless Steel
RDA4030EZ	4" x 3"	Stainless Steel



"ANDREWS" - 'REDUCING FEMALE COUPLERS x MALE ADAPTERS'		
PART NO.	SIZE / DESCRIPTION	MATERIAL
1510-DA-AL	1 1/2" Coupler x 1" Adapter	Aluminium
1520-DA-AL	1 1/2" Coupler x 2" Adapter	Aluminium
2015-DA-AL	2" Coupler x 1 1/2" Adapter	Aluminium
2030-DA-AL	2" Coupler x 3" Adapter	Aluminium
2040-DA-AL	2" Coupler x 4" Adapter	Aluminium
3015-DA-AL	3" Coupler x 1 1/2" Adapter	Aluminium
3020-DA-AL	3" Coupler x 2" Adapter	Aluminium
3040-DA-AL	3" Coupler x 4" Adapter	Aluminium
4020-DA-AL	4" Coupler x 2" Adapter	Aluminium
4025-DA-AL	4" Coupler x 2 1/2" Adapter	Aluminium
4030-DA-AL	4" Coupler x 3" Adapter	Aluminium
4060-DA-AL	4" Coupler x 6" Adapter	Aluminium
5040-DA-AL	5" Coupler x 4" Adapter	Aluminium
6030-DA-AL	6" Coupler x 3" Adapter	Aluminium
6040-DA-AL	6" Coupler x 4" Adapter	Aluminium
3020-DA-ALH	3" Coupler x 2" Adapter	Aluminium Hard Coat
4030-DA-ALH	4" Coupler x 3" Adapter	Aluminium Hard Coat
3020-DA-BR	3" Coupler x 2" Adapter	Brass
4030-DA-BR	4" Coupler x 3" Adapter	Brass
6040-DA-BR	6" Coupler x 4" Adapter	Brass
3020-DA-MI	3" Coupler x 2" Adapter	Unplated Malleable Iron
4030-DA-MI	4" Coupler x 3" Adapter	Unplated Malleable Iron
6040-DA-MI	6" Coupler x 4" Adapter	Unplated Malleable Iron
1520-DA-SS	1 1/2" Coupler x 2" Adapter	Stainless Steel
2015-DA-SS	2" Coupler x 1 1/2" Adapter	Stainless Steel
2030-DA-SS	2" Coupler x 3" Adapter	Stainless Steel
3020-DA-SS	3" Coupler x 2" Adapter	Stainless Steel
3040-DA-SS	3" Coupler x 4" Adapter	Stainless Steel
4030-DA-SS	4" Coupler x 3" Adapter	Stainless Steel
6040-DA-SS	6" Coupler x 4" Adapter	Stainless Steel

**B**



## “ANDREWS” - ‘MALE x MALE ADAPTER’

PART NO.	SIZE	MATERIAL
150-AA-AL	1 1/2"	Aluminium
1520-AA-AL	1 1/2" x 2"	Aluminium
200-AA-AL	2"	Aluminium
2030-AA-AL	2" x 3"	Aluminium
2040-AA-AL	2" x 4"	Aluminium
300-AA-AL	3"	Aluminium
3040-AA-AL	3" x 4"	Aluminium
400-AA-AL	4"	Aluminium
4060-AA-AL	4" x 6"	Aluminium
600-AA-AL	6"	Aluminium
150-AA-BR	1 1/2"	Brass
200-AA-BR	2"	Brass
300-AA-BR	3"	Brass
100-AA-SS	1"	Stainless Steel
150-AA-SS	1 1/2"	Stainless Steel
1520-AA-SS	1 1/2" x 2"	Stainless Steel
200-AA-SS	2"	Stainless Steel
2030-AA-SS	2" x 3"	Stainless Steel
300-AA-SS	3"	Stainless Steel

## 90° ELBOW - ‘MALE ADAPTER x FEMALE THREAD’



PART NO.	SIZE	THREAD	MATERIAL
150A-90-AL	1 1/2"	NPT	Aluminium
200A-90-AL	2"	NPT	Aluminium
300A-90-AL	3"	NPT	Aluminium
400A-90-AL	4"	NPT	Aluminium
90PPA150	1 1/2"	NPT	Polypropylene
90PPA200	2"	NPT	Polypropylene
300A-90-SS	3"	NPT	Stainless Steel



## 90° ELBOW - ‘FEMALE COUPLER x MALE THREAD’

PART NO.	SIZE	THREAD	MATERIAL
150B-90-AL	1 1/2"	NPT	Aluminium
200B-90-AL	2"	NPT	Aluminium



## 90° ELBOW - ‘FEMALE COUPLER x HOSE TAIL’

PART NO.	SIZE	MATERIAL
150C-90-AL	1 1/2"	Aluminium
200C-90-AL	2"	Aluminium
300C-90-AL	3"	Aluminium
400C-90-AL	4"	Aluminium
90PPC150	1 1/2"	Polypropylene
90PPC200	2"	Polypropylene
300C90-SS	3"	Stainless Steel



90° ELBOW - 'FEMALE COUPLER x FEMALE THREAD'			
PART NO.	SIZE	THREAD	MATERIAL
150D-90-AL	1 1/2"	NPT	Aluminium
200D-90-AL	2"	NPT	Aluminium
300D-90-AL	3"	NPT	Aluminium
400D-90-AL	4"	NPT	Aluminium
90PPD150	1 1/2"	NPT	Polypropylene
90PPD200	2"	NPT	Polypropylene
200D-90-SS	2"	NPT	Stainless Steel
300D-90-SS	3"	NPT	Stainless Steel



90° ELBOW - 'MALE ADAPTER x HOSE TAIL'		
PART NO.	SIZE	MATERIAL
300E-90-AL	3"	Aluminium
400E-90-AL	4"	Aluminium

\*All these parts can be manufactured in stainless steel upon request.



90° ELBOW - 'MALE ADAPTER x MALE THREAD'			
PART NO.	SIZE	THREAD	MATERIAL
150F-90-AL	1 1/2"	NPT	Aluminium
200F-90-AL	2"	NPT	Aluminium
90PPF150	1 1/2"	NPT	Polypropylene
90PPF200	2"	NPT	Polypropylene



90° ELBOW - 'FEMALE COUPLER x MALE ADAPTER'		
PART NO.	SIZE	MATERIAL
150DA-90-AL	1 1/2"	Aluminium
200DA-90-AL	2"	Aluminium
300DA-90-AL	3"	Aluminium
400DA-90-AL	4"	Aluminium
600DA-90-AL	6"	Aluminium



90° ELBOW - 'FEMALE x FEMALE COUPLER'		
PART NO.	SIZE	MATERIAL
400DD-90-AL	4"	Aluminium

\*All these parts can be manufactured in stainless steel upon request.

**B**



"Y" PIECE IN ALUMINIUM	
PART NO.	DESCRIPTION
200YDAA-AL	2" Coupler x 2" Adapter x 2" Adapter



"ANDREWS" FLANGED COUPLERS AND ADAPTERS		
PART NO.	SIZE	MATERIAL
200-AL-AL	2"	Aluminium
300-AL-AL	3"	Aluminium
400-AL-AL	4"	Aluminium
600-AL-AL	6"	Aluminium
100-AL-SS	1"	Stainless Steel
150-AL-SS	1 1/2"	Stainless Steel
200-AL-SS	2"	Stainless Steel
300-AL-SS	3"	Stainless Steel
400-AL-SS	4"	Stainless Steel
600-AL-SS	6"	Stainless Steel
200-DL-AL	2"	Aluminium
300-DL-AL	3"	Aluminium
400-DL-AL	4"	Aluminium
600-DL-AL	6"	Aluminium
100-DL-SS	1"	Stainless Steel
150-DL-SS	1 1/2"	Stainless Steel
200-DL-SS	2"	Stainless Steel
300-DL-SS	3"	Stainless Steel
400-DL-SS	4"	Stainless Steel
600-DL-SS	6"	Stainless Steel



"BOSS-LOCK" STANDARD HANDLE ASSEMBLIES		
PART NO.	COUPLER SIZE	DESCRIPTION
BHSC175	3/4" - 1"	Brass
BHSC152	1 1/4" - 2 1/2"	Brass
BHSC34	3" and 4"	Brass
RHSC175	3/4" - 1"	Investment Cast Stainless Steel
RHSC152	1 1/4" - 2 1/2"	Investment Cast Stainless Steel
RHSC34	3" and 4"	Investment Cast Stainless Steel

Assembly includes cam arm, pin and pull ring.



"EZ BOSS-LOCK" STANDARD ASSEMBLY HANDLES	
PART NO.	SIZE
BHSC175	3/4" - 1"
BHSC152	1 1/4" - 2"
BHSC34	3" and 4"

Investment Cast Stainless Steel Cam Arm and Lever. 316 Stainless Steel Spring. Stainless Steel Pin and Washer. Plated Carbon Steel Pull Ring.

UNDER NO CIRCUMSTANCES should the EZ Boss-Lock cam arms be used on any fitting not specifically produced for their use.

The EZ Boss-Lock cam arms CANNOT be retrofitted onto existing Aluminium, Brass or Plated Malleable Iron Boss-Lock already in service.



DIXON STANDARD HANDLE ASSEMBLIES			
PART NO.	SIZE	DESCRIPTION	MATERIAL
DSH50	1/2" and 3/4"	Handle, ring and pin	Investment Stainless Steel
DSH100	1"	Handle, ring and pin	Investment Stainless Steel
DSH200	1 1/4" thru 2 1/2"	Handle, ring and pin	Investment Stainless Steel
DSH300	3" and 4"	Handle, ring and pin	Investment Stainless Steel



"ANDREWS" STANDARD HANDLE ASSEMBLIES			
PART NO.	SIZE	DESCRIPTION	MATERIAL
200-HRP-BR	1 1/4" - 2 1/2"	Handle, Ring and Pin	Brass
300-HRP-BR	3" - 5"	Handle, Ring and Pin	Brass
600-HRP-BR	6"	Handle, Ring and Pin	Brass
800-HRP-BR	8"	Handle, Ring and Pin	Brass
50-HRP-SP	1/2"	Handle, Ring and Pin	Sintered Stainless Steel
75-HRP-SP	3/4"	Handle, Ring and Pin	Sintered Stainless Steel
100-HRP-SP	1"	Handle, Ring and Pin	Sintered Stainless Steel
200-HRP-SP	1 1/4" - 2 1/2"	Handle, Ring and Pin	Sintered Stainless Steel
300-HRP-SP	3" - 5"	Handle, Ring and Pin	Sintered Stainless Steel
200-HRP-SI	1 1/4" - 2 1/2"	Handle, Ring and Pin	Investment Stainless Steel
300-HRP-SI	3" - 5"	Handle, Ring and Pin	Investment Stainless Steel
600-HRP-SI	6"	Handle, Ring and Pin	Investment Stainless Steel



Stainless Steel Pins are standard with all assemblies. Pull Rings are standard on 1 1/4" to 6", optional on other sizes.

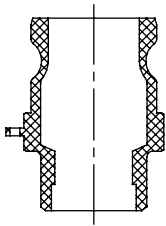
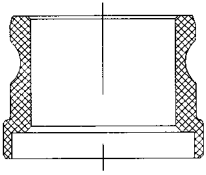
## CLIPS, LANYARDS AND PULL RINGS FOR "BOSS-LOCK"



PART NO.	DESCRIPTION
100PRSCSS	Stainless Steel Pull Ring Safety Clip for Coupler Size 3/4" x 1"
200PRSCSS	Stainless Steel Pull Ring Safety Clip for Coupler Size 1 1/4" x 2 1/2"
300PRSCSS	Stainless Steel Pull Ring Safety Clip for Coupler Size 3" x 4"
ACL2	Carbon Steel Clip with Nylon Lanyard Size 3/4" and 1"
ACL3	Carbon Steel Clip with Nylon Lanyard Size 3" and 4"
ACL4	Carbon Steel Clip with Nylon Lanyard Size 1 1/4" and 2 1/2"
AC7	Stainless Steel Clip
LR7	Stainless Steel Lanyard
BLCA152CS	Carbon Steel Assembly - Pull Ring, Chain and AC3 Clip
CH-B-6	Jack Chain with S-Hooks - 6" Brass
CH-B-12	Jack Chain with S-Hooks - 12" Brass
CH-C-12	Jack Chain with S-Hooks - 12" Carbon Steel
CH-SS-6	Jack Chain with S-Hooks - 6" Stainless Steel
CH-SS-12	Jack Chain with S-Hooks - 12" Stainless Steel
CH-SS-24	Jack Chain with S-Hooks - 24" Stainless Steel
J125	Sash Chain with Plated Steel Pull Rings - 4 1/2" Brass
J150	Sash Chain with Plated Steel Pull Rings - 6 1/2" Brass
J300	Sash Chain with Plated Steel Pull Rings - 8 1/2" Brass
J500	Sash Chain with Plated Steel Pull Rings - 12 1/2" Brass



**B**

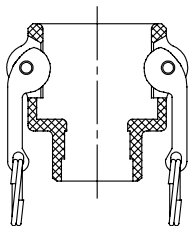
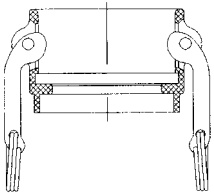


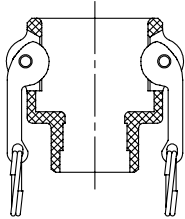
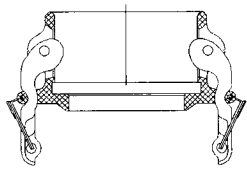
## “ANDREWS” ADAPTERS FOR WELDING

PART NO.	SIZE	BORE	MATERIAL
<b>SOCKET WELD TO SCH 40 PIPE</b>			
200AWSPAL	2"	2.390	Aluminium
300AWSPAL	3"	3.530	Aluminium
400AWSPAL	4"	4.530	Aluminium
500AWSPAL	5"	5.593	Aluminium
600AWSPAL	6"	6.655	Aluminium
75AWSPSS	3/4"	1.065	Stainless Steel
100AWSPSS	1"	1.330	Stainless Steel
150AWSPSS	1 1/2"	1.915	Stainless Steel
200AWSPSS	2"	2.390	Stainless Steel
300AWSPSS	3"	3.530	Stainless Steel
400AWSPSS	4"	4.530	Stainless Steel
600AWSPSS	6"	6.655	Stainless Steel
<b>BUTT WELD TO SCH 40 PIPE &amp; SOCKET WELD TO NOMINAL OD TUBING</b>			
200AWBPSTAL	2"	2.390	Aluminium
300AWBPSTAL	3"	3.530	Aluminium
400AWBPSTAL	4"	4.530	Aluminium
600AWBPSTAL	6"	6.655	Aluminium
100AWBPSTSS	1"	1.330	Stainless Steel
150AWBPSTSS	1 1/2"	1.915	Stainless Steel
200AWBPSTSS	2"	2.390	Stainless Steel
300AWBPSTSS	3"	3.530	Stainless Steel
400AWBPSTSS	4"	4.530	Stainless Steel
600AWBPSTSS	6"	6.655	Stainless Steel

## “ANDREWS” COUPLERS FOR WELDING

PART NO.	SIZE	BORE	MATERIAL
<b>SOCKET WELD TO SCH 40 PIPE</b>			
200DWSPAL	2"	2.390	Aluminium
300DWSPAL	3"	3.530	Aluminium
400DWSPAL	4"	4.530	Aluminium
600DWSPAL	6"	6.655	Aluminium
100DWSPSS	1"	1.330	Stainless Steel
150DWSPSS	1 1/2"	1.915	Stainless Steel
200DWSPSS	2"	2.390	Stainless Steel
300DWSPSS	3"	3.530	Stainless Steel
400DWSPSS	4"	4.530	Stainless Steel
600DWSPSS	6"	6.655	Stainless Steel
<b>BUTT WELD TO SCH 40 PIPE &amp; SOCKET WELD TO NOMINAL OD TUBING</b>			
300DWBPSTAL	3"	3.530	Aluminium
400DWBPSTAL	4"	4.530	Aluminium
500DWBPSTAL	5"	5.593	Aluminium
600DWBPSTAL	6"	6.655	Aluminium
200DWBPSTSS	2"	2.390	Stainless Steel
300DWBPSTSS	3"	3.530	Stainless Steel
400DWBPSTSS	4"	4.530	Stainless Steel





## “EZ BOSS-LOCK” COUPLERS FOR WELDING

PART NO.	SIZE	BORE	MATERIAL
<b>SOCKET WELD TO SCH 40 PIPE</b>			
RDWSP100EZ	1"	1.330	Stainless Steel
RDWSP150EZ	1 1/2"	1.915	Stainless Steel
RDWSP200EZ	2"	2.390	Stainless Steel
RDWSP300EZ	3"	3.530	Stainless Steel
RDWSP400EZ	4"	4.530	Stainless Steel
RDWSP600EZ	6"	6.695	Stainless Steel
<b>BUTT WELD TO SCH 40 PIPE &amp; SOCKET WELD TO NOMINAL OD TUBING</b>			
RDWBPST075EZ	3/4"	0.765	Stainless Steel
RDWBPST100EZ	1"	1.330	Stainless Steel
RDWBPST150EZ	1 1/2"	1.915	Stainless Steel
RDWBPST200EZ	2"	2.390	Stainless Steel
RDWBPST300EZ	3"	3.530	Stainless Steel
RDWBPST400EZ	4"	4.530	Stainless Steel
RDWBPST600EZ	6"	6.655	Stainless Steel



## “EZ BOSS-LOCK” - ‘FEMALE COUPLER x MALE ADAPTER’

PART NO.	SIZE	MATERIAL
ADA3020	3" x 2"	Aluminium
ADA4030	4" X 3"	Aluminium
RDA3020BL	3" x 2"	Stainless Steel
RDA4030BL	4" x 3"	Stainless Steel



## King Crimp Cam & Groove

**B**

### SAFETY ALERT

Only use the crimp style shanks with the crimp style sleeves and ferrules.  
Due to differences in dimensions and tolerances for safety reasons, do not interchange other manufacturer's products with Dixon products.



### EZ BOSS-LOCK TYPE C COUPLERS

PART NO.	316 STAINLESS STEEL HOSE ID
RC100EZCR	1"
RC150EZCR	1 1/2"
RC200EZCR	2"
RC300EZCR	3"
RC400EZCR	4"
RC600EZCR	6"



### TYPE C COUPLER

ALUMINIUM* PART NO.	BRASS PART NO.	STAINLESS STEEL PART NO.	HOSE ID
100-C-EC-AL	100-C-EC-BR	100-C-EC-SS	1"
150-C-EC-AL	150-C-EC-BR	150-C-EC-SS	1 1/2"
200-C-EC-AL	200-C-EC-BR	200-C-EC-SS	2"
300-C-EC-AL	300-C-EC-BR	300-C-EC-SS	3"
400-C-EC-AL	400-C-EC-BR	400-C-EC-SS	4"

\*A380 permanent mold aluminium



### TYPE E ADAPTERS

ALUMINIUM* PART NO.	BRASS PART NO.	STAINLESS STEEL PART NO.	HOSE ID
100-E-EC-AL	100-E-EC-BR	100-E-EC-SS	1"
150-E-EC-AL	150-E-EC-BR	150-E-EC-SS	1 1/2"
200-E-EC-AL	200-E-EC-BR	200-E-EC-SS	2"
300-E-EC-AL	300-E-EC-BR	300-E-EC-SS	3"
400-E-EC-AL	400-E-EC-BR	400-E-EC-SS	4"

\*A380 permanent mold aluminium



**SAFETY ALERT**  
 Only use the crimp style shanks with the crimp style sleeves and ferrules.  
 Due to differences in dimensions and tolerances for safety reasons, do not interchange other manufacturer's products with Dixon products.

CRIMP STYLE FERRULES				
CARBON STEEL PART NO.	304 STAINLESS STEEL PART NO.	HOSE ID	HOSE OD	
			FROM	TO
CF100-1CS	CF100-1SS	1"	30.56	31.75
CF100-2CS	CF100-2SS		32.15	33.34
CF100-3CS	CF100-3SS		33.73	34.93
CF100-4CS	CF100-4SS		35.32	36.51
CF100-5CS	CF100-5SS		36.91	38.10
CF100-6CS	CF100-6SS		38.50	39.69
CF100-7CS	CF100-7SS		40.08	41.28
CF100-8CS	CF100-8SS		41.67	42.86
CF100-9CS	CF100-9SS		43.26	44.45
CF100-10CS	CF100-10SS		44.85	46.04
CF150-1CS	CF150-1SS	1½"	41.67	42.86
CF150-2CS	CF150-2SS		43.26	44.45
CF150-3CS	CF150-3SS		44.85	46.04
CF150-4CS	CF150-4SS		46.43	47.63
CF150-5CS	CF150-5SS		48.02	49.21
CF150-6CS	CF150-6SS		49.61	50.80
CF150-7CS	CF150-7SS		51.20	52.39
CF150-8CS	CF150-8SS		52.78	53.98
CF150-9CS	CF150-9SS		54.37	55.56
CF150-10CS	CF150-10SS		55.96	57.15
CF150-11CS	CF150-11SS		57.55	58.74
CF150-12CS	CF150-12SS		59.13	60.33
CF200-1CS	CF200-1SS	2"	55.96	57.15
CF200-2CS	CF200-2SS		57.55	58.74
CF200-3CS	CF200-3SS		59.13	60.33
CF200-4CS	CF200-4SS		60.72	61.91
CF200-5CS	CF200-5SS		62.31	63.50
CF200-6CS	CF200-6SS		63.90	65.09
CF200-7CS	CF200-7SS		65.48	66.68
CF200-8CS	CF200-8SS		67.07	68.26
CF200-9CS	CF200-9SS		68.66	69.85
CF200-10CS	CF200-10SS		70.25	71.44
CF200-11CS	CF200-11SS		71.83	73.03
CF200-12CS	CF200-12SS		73.42	74.61
CF300-1CS	CF300-1SS	3"	81.36	82.55
CF300-2CS	CF300-2SS		82.95	84.14
CF300-3CS	CF300-3SS		84.53	85.73
CF300-4CS	CF300-4SS		86.12	87.31
CF300-5CS	CF300-5SS		87.71	88.90
CF300-6CS	CF300-6SS		89.30	90.49
CF300-7CS	CF300-7SS		90.88	92.08
CF300-8CS	CF300-8SS		92.47	93.66
CF300-9CS	CF300-9SS		94.06	95.25
CF300-10CS	CF300-10SS		95.65	96.84
CF300-11CS	CF300-11SS		97.23	98.43
CF300-12CS	CF300-12SS		98.82	100.01
CF300-13CS	CF300-13SS	100.41	101.60	
CF300-14CS	CF300-14SS	102.00	103.19	
CF300-15CS	CF300-15SS	103.58	104.78	
CF300-16CS	CF300-16SS	105.17	106.36	
CF400-1CS	CF400-1SS	4"	106.76	107.95
CF400-2CS	CF400-2SS		108.35	109.54
CF400-3CS	CF400-3SS		109.93	111.13
CF400-4CS	CF400-4SS		111.52	112.71
CF400-5CS	CF400-5SS		113.11	114.30
CF400-6CS	CF400-6SS		114.70	115.89
CF400-7CS	CF400-7SS		116.28	117.48
CF400-8CS	CF400-8SS		117.87	119.06
CF400-9CS	CF400-9SS		119.46	120.65
CF400-10CS	CF400-10SS		121.05	122.24
CF400-11CS	CF400-11SS		122.63	123.83
CF400-12CS	CF400-12SS		124.22	125.41
CF400-13CS	CF400-13SS	125.81	127.00	
CF400-14CS	CF400-14SS	127.40	128.59	
CF400-15CS	CF400-15SS	128.98	130.18	
CF400-16CS	CF400-16SS	130.57	131.76	
CF600-1CS	CF600-1SS	6"	160.73	163.51
CF600-2CS	CF600-2SS		163.91	166.69
CF600-3CS	CF600-3SS		167.08	169.86
CF600-4CS	CF600-4SS		170.26	173.04
CF600-5CS	CF600-5SS		173.43	176.39
CF600-6CS	CF600-6SS		176.61	179.39
CF600-7CS	CF600-7SS		179.78	182.56
CF600-8CS	CF600-8SS		182.96	185.74
CF600-9CS	CF600-9SS		186.13	188.91

**B**

**B**



## CRIMP STYLE SLEEVES

CARBON STEEL PART NO.	304 STAINLESS STEEL PART NO.	ALUMINIUM PART NO.	HOSE ID	HOSE OD	
				FROM	TO
CS100-1CS	CS100-1SS	CS100-1AL	1"	30.56	31.75
CS100-2CS	CS100-2SS	CS100-2AL		32.15	33.34
CS100-3CS	CS100-3SS	CS100-3AL		33.73	34.93
CS100-4CS	CS100-4SS	CS100-4AL		35.32	36.51
CS100-5CS	CS100-5SS	CS100-5AL		36.91	38.10
CS100-6CS	CS100-6SS	CS100-6AL		38.50	39.69
CS100-7CS	CS100-7SS	CS100-7AL		40.08	41.28
CS100-8CS	CS100-8SS	CS100-8AL		41.67	42.86
CS100-9CS	CS100-9SS	CS100-9AL		43.26	44.45
CS100-10CS	CS100-10SS	CS100-10AL		44.85	46.04
CS150-1CS	CS150-1SS	CS150-1AL	1½"	41.67	42.86
CS150-2CS	CS150-2SS	CS150-2AL		43.26	44.45
CS150-3CS	CS150-3SS	CS150-3AL		44.85	46.04
CS150-4CS	CS150-4SS	CS150-4AL		46.43	47.63
CS150-5CS	CS150-5SS	CS150-5AL		48.02	49.21
CS150-6CS	CS150-6SS	CS150-6AL		49.61	50.80
CS150-7CS	CS150-7SS	CS150-7AL		51.20	52.39
CS150-8CS	CS150-8SS	CS150-8AL		52.78	53.98
CS150-9CS	CS150-9SS	CS150-9AL		54.37	55.56
CS150-10CS	CS150-10SS	CS150-10AL		55.96	57.15
CS150-11CS	CS150-11SS	CS150-11AL		57.55	58.74
CS150-12CS	CS150-12SS	CS150-12AL		59.13	60.33
CS200-1CS	CS200-1SS	CS200-1AL	2"	55.96	57.15
CS200-2CS	CS200-2SS	CS200-2AL		57.55	58.74
CS200-3CS	CS200-3SS	CS200-3AL		59.13	60.33
CS200-4CS	CS200-4SS	CS200-4AL		60.72	61.91
CS200-5CS	CS200-5SS	CS200-5AL		62.31	63.50
CS200-6CS	CS200-6SS	CS200-6AL		63.90	65.09
CS200-7CS	CS200-7SS	CS200-7AL		65.48	66.68
CS200-8CS	CS200-8SS	CS200-8AL		67.07	68.26
CS200-9CS	CS200-9SS	CS200-9AL		68.66	69.85
CS200-10CS	CS200-10SS	CS200-10AL		70.25	71.44
CS200-11CS	CS200-11SS	CS200-11AL		71.83	73.03
CS200-12CS	CS200-12SS	CS200-12AL		73.42	74.61
CS300-1CS	CS300-1SS	CS300-1AL	3"	81.36	82.55
CS300-2CS	CS300-2SS	CS300-2AL		82.95	84.14
CS300-3CS	CS300-3SS	CS300-3AL		84.53	85.73
CS300-4CS	CS300-4SS	CS300-4AL		86.12	87.31
CS300-5CS	CS300-5SS	CS300-5AL		87.71	88.90
CS300-6CS	CS300-6SS	CS300-6AL		89.30	90.49
CS300-7CS	CS300-7SS	CS300-7AL		90.88	92.08
CS300-8CS	CS300-8SS	CS300-8AL		92.47	93.66
CS300-9CS	CS300-9SS	CS300-9AL		94.06	95.25
CS300-10CS	CS300-10SS	CS300-10AL		95.65	96.84
CS300-11CS	CS300-11SS	CS300-11AL		97.23	98.43
CS300-12CS	CS300-12SS	CS300-12AL		98.82	100.01
CS300-13CS	CS300-13SS	CS300-13AL		100.41	101.60
CS300-14CS	CS300-14SS	CS300-14AL		102.00	103.19
CS300-15CS	CS300-15SS	CS300-15AL		103.58	104.78
CS300-16CS	CS300-16SS	CS300-16AL		105.17	106.36
CS400-1CS	CS400-1SS	CS400-1AL	4"	106.76	107.95
CS400-2CS	CS400-2SS	CS400-2AL		108.35	109.54
CS400-3CS	CS400-3SS	CS400-3AL		109.93	111.13
CS400-4CS	CS400-4SS	CS400-4AL		111.52	112.71
CS400-5CS	CS400-5SS	CS400-5AL		113.11	114.30
CS400-6CS	CS400-6SS	CS400-6AL		114.70	115.89
CS400-7CS	CS400-7SS	CS400-7AL		116.28	117.48
CS400-8CS	CS400-8SS	CS400-8AL		117.87	119.06
CS400-9CS	CS400-9SS	CS400-9AL		119.46	120.65
CS400-10CS	CS400-10SS	CS400-10AL		121.05	122.24
CS400-11CS	CS400-11SS	CS400-11AL		122.63	123.83
CS400-12CS	CS400-12SS	CS400-12AL		124.22	125.41
CS400-13CS	CS400-13SS	CS400-13AL		125.81	127.00
CS400-14CS	CS400-14SS	CS400-14AL		127.40	128.59
CS400-15CS	CS400-15SS	CS400-15AL		128.98	130.18
CS400-16CS	CS400-16SS	CS400-16AL		130.57	131.76
CS600-1CS	CS600-1SS	CS600-1AL	6"	160.73	163.51
CS600-2CS	CS600-2SS	CS600-2AL		163.91	166.69
CS600-3CS	CS600-3SS	CS600-3AL		167.08	169.86
CS600-4CS	CS600-4SS	CS600-4AL		170.26	173.04
CS600-5CS	CS600-5SS	CS600-5AL		173.43	176.39
CS600-6CS	CS600-6SS	CS600-6AL		176.61	179.39
CS600-7CS	CS600-7SS	CS600-7AL		179.78	182.56
CS600-8CS	CS600-8SS	CS600-8AL		182.96	185.74
CS600-9CS	CS600-9SS	CS600-9AL		186.13	188.91

### SAFETY ALERT

Only use the crimp style shanks with the crimp style sleeves and ferrules.

Due to differences in dimensions and tolerances for safety reasons, do not interchange other manufacturer's products with Dixon products.

## DIN Specification Cam & Groove BS EN 14420-7:2004



CAM COUPLINGS SMOOTH TAIL WITH COLLAR		
PART NO.	SIZE	MATERIAL
100CSSDIN	DN25	Stainless Steel
150CSSDIN	DN40	Stainless Steel
200CSSDIN	DN50	Stainless Steel
100ESSDIN	DN25	Stainless Steel
150ESSDIN	DN40	Stainless Steel
200ESSDIN	DN50	Stainless Steel
100CPPDIN	DN25	Polypropylene
200CPPDIN	DN50	Polypropylene
100EPPDIN	DN25	Polypropylene
200EPPDIN	DN50	Polypropylene

**B**

Couplings and Adapters are also available in brass and aluminium. Price on application.

## CAM COUPLINGS TO BS EN 14420



PART NO.	SIZE	MATERIAL
75DSSDIN	DN20	Stainless Steel
100DSSDIN	DN25	Stainless Steel
125DSSDIN	DN32	Stainless Steel
150DSSDIN	DN40	Stainless Steel
200DSSDIN	DN50	Stainless Steel
250DSSDIN	DN65	Stainless Steel
300DSSDIN	DN80	Stainless Steel
400DSSDIN	DN100	Stainless Steel
75ASSDIN	DN20	Stainless Steel
100ASSDIN	DN25	Stainless Steel
125ASSDIN	DN32	Stainless Steel
150ASSDIN	DN40	Stainless Steel
200ASSDIN	DN50	Stainless Steel
250ASSDIN	DN65	Stainless Steel
300ASSDIN	DN80	Stainless Steel
400ASSDIN	DN100	Stainless Steel

Couplings and Adapters are also available in brass and aluminium. Price on application.  
All female threads are BSP parallel.

## BS EN 14420 "EZ BOSS-LOCK"



PART NO.	SIZE	MATERIAL
RD100 DIN EZ	DN25	Stainless Steel
RD150 DIN EZ	DN40	Stainless Steel
RD200 DIN EZ	DN50	Stainless Steel
RD300 DIN EZ	DN80	Stainless Steel
RD400 DIN EZ	DN100	Stainless Steel

Available to special order only. Minimum quantities may apply.

## High Pressure Couplings and Adapters For Snow Cannon Applications

**B**



### 2" (DN50) COUPLER FOR SAFETY CLAMP

PART NO.	MAX. WORKING PRESSURE	MATERIAL
HPCG50SC	60 Bar	316 / 1.4401 / Z6CND17.11



### 2" (DN50) COUPLER FOR CRIMP FERRULE

PART NO.	MAX. WORKING PRESSURE	MATERIAL
HPCG50CF	60 Bar	316 / 1.4401 / Z6CND17.11

### 2" (DN50) COUPLER FOR WIRE WHIP

PART NO.	MAX. WORKING PRESSURE	MATERIAL
HPCG50W	60 Bar	316 / 1.4401 / Z6CND17.11



### 2" (DN50) COUPLER x BSP PL. FEMALE THREAD

PART NO.	MAX. WORKING PRESSURE	MATERIAL
HPCG50BSPF	60 Bar	316 / 1.4401 / Z6CND17.11



### 2" (DN50) ADAPTER WITH TAIL FOR SAFETY CLAMP

PART NO.	MAX. WORKING PRESSURE	MATERIAL
HPA50SC	60 Bar	316 / 1.4401 / Z6CND17.11



### 2" (DN50) ADAPTER WITH TAIL FOR CRIMP FERRULE

PART NO.	MAX. WORKING PRESSURE	MATERIAL
HPA50CF	60 Bar	316 / 1.4401 / Z6CND17.11

### 2" (DN50) ADAPTER WITH TAIL FOR WIRE WHIP

PART NO.	MAX. WORKING PRESSURE	MATERIAL
HPA50W	60 Bar	316 / 1.4401 / Z6CND17.11



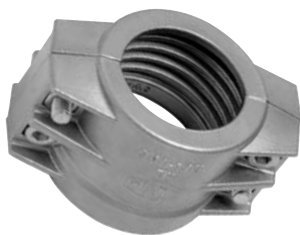
### 2" (DN50) ADAPTER x BSP PL. FEMALE THREAD

PART NO.	MAX. WORKING PRESSURE	MATERIAL
HPA50BSPF	60 Bar	316 / 1.4401 / Z6CND17.11



### 2.5" (DN65) X 2" (DN50) BSP PL. FEMALE THREAD COUPLER

PART NO.	MAX. WORKING PRESSURE	MATERIAL
HPCG65BSPF	100 Bar	316 / 1.4401 / Z6CND17.11



### 2" (DN50) SAFETY CLAMP

PART NO.	MAX. WORKING PRESSURE	MATERIAL
HPSC50	60 Bar	316 / 1.4401 / Z6CND17.11

**B**



2" (DN50) HOLEDALL, CRIMP FERRULE		
PART NO.	MAX. WORKING PRESSURE	MATERIAL
HPH50CF	60 Bar	ASTM A106 / DIN 2448 / 1629 ST52.0



2" (DN50) x BSP PI. MALE THREAD HOLEDALL®, IX STEM		
PART NO.	MAX. WORKING PRESSURE	MATERIAL
HPH50IXS	60 Bar	316L / 1.4404 / Z2CND17.12

Note: IX = Internal Expansion.



2" (DN50) HOLEDALL, IX FERRULE (PLASTIC)		
PART NO.	MAX. WORKING PRESSURE	MATERIAL
HPH50IXFP	60 Bar	Cast Nylon

Note: IX = Internal Expansion.



2" (DN50) HOLEDALL, IX FERRULE (CARBON STEEL)		
PART NO.	MAX. WORKING PRESSURE	MATERIAL
HPH50IXFC	60 Bar	ASTM A106 / DIN 2448 / 1629 ST52.0

Note: IX = Internal Expansion.

## Dry Mates

**Sizes:** 1", 1 1/2" and 2" (Female NPT & BSP PI Thread)

**Material:** 316 Stainless Steel construction, Viton Seals.  
100% PTFE Ball Seals

**Flow:** 1" Dry-Mate, 1" Full Port  
1 1/2" Dry-Mate, 1 1/2" Full Port  
2" Dry-Mate, 1 1/2" Standard Port

**Details/Specification:**

• **Built in safety features:**

The two Dry-Mate halves couple together with cam arms, the most recognised and proven fluid connection available. Two interlocking handles make opening and closing easy. No guessing involved

• **Built in safety features:**

When liquid is flowing, Dry-Mate halves cannot be uncoupled without turning handles to closed position. When Dry-Mate handles are apart, handles cannot be turned to open position

**Prevents accidental spillage and exposure to personnel.**



"DRY-MATE" - MALE	
PART NO.	SIZE
DM100ABSS	1"
DM150ABSS	1 1/2"
DM200ABSS	2"

"DRY-MATE" - FEMALE	
PART NO.	SIZE
DM100DBSS	1"
DM150DBSS	1 1/2"
DM200DBSS	2"

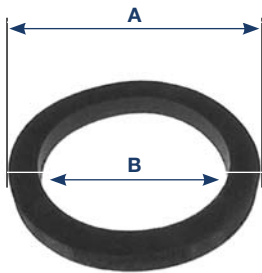


Valves fitted with Viton seals. For other optional seal materials, please contact our sales office.



## Seals

**B**



CAM AND GROOVE SEAL DIMENSIONS			
PART NO.	SIZE	DIMENSION A O.D	DIMENSION B I.D
50-G	1/2**	26.19	17.44
75-G	3/4"	34.92	22.22
100-G	1"	39.68	26.98
125-G	1 1/4"	49.19	34.51
150-G	1 1/2"	55.54	41.27
200-G	2"	66.67	50.80
250-G	2 1/2"	79.37	60.32
300-G	3"	94.45	76.20
400-G	4"	124.82	101.60
500-G	5"	150.81	123.82
600-G	6"	177.38	152.40
800-G	8**	236.53	206.37

The ID's of the PTFE Envelope gaskets and the PTFE Accordion gaskets are 1.59mm smaller than the ID's for the Elastomeric gaskets shown above.

\*No interchange standard exists for the 1/2" and 8" fittings. Generally these sizes do not interchange with other manufacturers products. As such, the gaskets in these sizes are not suitable for use in other manufacturers couplings.

### CAM AND GROOVE SEAL COLOUR CODES

GASKET CODE	GASKET MATERIAL	MATERIAL COLOUR	COLOUR CODE STRIPES
-BU	Buna N (standard in all metal fittings)	Black	1 Blue
-VI	Viton	Black	1 Yellow
-THK	Extra Thick Buna	Black	2 Blue
-EPR	Ethylene Propylene	Black	1 White
-NE	Neoprene	Black	1 Red
-WNE	White Neoprene - FDA approved material	White	None
-WB	White Buna N - FDA approved material	White	Blue
-SIL	Silicone	Red	None
-TF	PTFE (TFE) Envelope with Buna N Filler	White/Black	1 Blue
-TFVI	PTFE (TFE) Envelope with Viton Filler	White/Black	1 Yellow
-TFWB	PTFE (TFE) Envelope with White Buna N Filler - FDA approved material	White/Black	Blue
-TFEP	PTFE (TFE) Envelope with Ethylene Propylene Filler	White/Black	1 White Stripe
-TES	PTFE (FEP) Encapsulated Silicone Core - FDA approved material	Translucent/Red	None
-TEV	PTFE (FEP) Encapsulated Viton Core	Translucent/Black	None
-TFACC	PTFE (TFE) Accordion - FDA approved material	White	None
-HYP	Hypalon	Green	None

Since other manufacturers coding systems vary, this chart should not be used as a reference in identifying gaskets of unknown origin.

## CAM AND GROOVE SEALS



PART NO.	SIZE	MATERIAL
50-G-BU	1/2"	Buna-N
75-G-BU	3/4"	Buna-N
100-G-BU	1"	Buna-N
125-G-BU	1 1/4"	Buna-N
150-G-BU	1 1/2"	Buna-N
200-G-BU	2"	Buna-N
250-G-BU	2 1/2"	Buna-N
300-G-BU	3"	Buna-N
400-G-BU	4"	Buna-N
500-G-BU	5"	Buna-N
600-G-BU	6"	Buna-N
100-G-THK	1"	Extra Thick Buna-N
125-G-THK	1 1/4"	Extra Thick Buna-N
150-G-THK	1 1/2"	Extra Thick Buna-N
200-G-THK	2"	Extra Thick Buna-N
250-G-THK	2 1/2"	Extra Thick Buna-N
300-G-THK	3"	Extra Thick Buna-N
400-G-THK	4"	Extra Thick Buna-N
50-G-VI	1/2"	Viton-A
75-G-VI	3/4"	Viton-A
100-G-VI	1"	Viton-A
125-G-VI	1 1/4"	Viton-A
150-G-VI	1 1/2"	Viton-A
200-G-VI	2"	Viton-A
250-G-VI	2 1/2"	Viton-A
300-G-VI	3"	Viton-A
400-G-VI	4"	Viton-A
500-G-VI	5"	Viton-A
75-G-EPR	3/4"	Ethylene Propylene
100-G-EPR	1"	Ethylene Propylene
125-G-EPR	1 1/4"	Ethylene Propylene
150-G-EPR	1 1/2"	Ethylene Propylene
200-G-EPR	2"	Ethylene Propylene
250-G-EPR	2 1/2"	Ethylene Propylene
300-G-EPR	3"	Ethylene Propylene
400-G-EPR	4"	Ethylene Propylene
75-G-NE	3/4"	Neoprene
100-G-NE	1"	Neoprene
125-G-NE	1 1/4"	Neoprene
150-G-NE	1 1/2"	Neoprene
200-G-NE	2"	Neoprene
250-G-NE	2 1/2"	Neoprene
300-G-NE	3"	Neoprene
400-G-NE	4"	Neoprene
150-G-WNE	1 1/2"	White Neoprene*
200-G-WNE	2"	White Neoprene*
300-G-WNE	3"	White Neoprene*
400-G-WNE	4"	White Neoprene*
600-G-WNE	6"	White Neoprene*
400-G-WB	4"	White Buna-N*
600-G-WB	6"	White Buna-N*
150-G-SIL	1 1/2"	Silicone
200-G-SIL	2"	Silicone
300-G-SIL	3"	Silicone
75-G-HYP	3/4"	Hypalon-CSM
100-G-HYP	1"	Hypalon-CSM
125-G-HYP	1 1/4"	Hypalon-CSM
150-G-HYP	1 1/2"	Hypalon-CSM
200-G-HYP	2"	Hypalon-CSM
250-G-HYP	2 1/2"	Hypalon-CSM
300-G-HYP	3"	Hypalon-CSM
400-G-HYP	4"	Hypalon-CSM

\* FDA Approved Materials

**B**



## CAM AND GROOVE SEALS

PART NO.	SIZE	MATERIAL
50-G-TF	1/2"	PTFE Buna Filler
75-G-TF	3/4"	PTFE Buna Filler
100-G-TF	1"	PTFE Buna Filler
125-G-TF	1 1/4"	PTFE Buna Filler
150-G-TF	1 1/2"	PTFE Buna Filler
200-G-TF	2"	PTFE Buna Filler
250-G-TF	2 1/2"	PTFE Buna Filler
300-G-TF	3"	PTFE Buna Filler
400-G-TF	4"	PTFE Buna Filler
600-G-TF	6"	PTFE Buna Filler
50-G-TFVI	1/2"	PTFE Viton Filler
75-G-TFVI	3/4"	PTFE Viton Filler
100-G-TFVI	1"	PTFE Viton Filler
125-G-TFVI	1 1/4"	PTFE Viton Filler
150-G-TFVI	1 1/2"	PTFE Viton Filler
200-G-TFVI	2"	PTFE Viton Filler
250-G-TFVI	2 1/2"	PTFE Viton Filler
300-G-TFVI	3"	PTFE Viton Filler
400-G-TFVI	4"	PTFE Viton Filler
200-G-TFWB	2"	PTFE White Buna Filler*
300-G-TFWB	3"	PTFE White Buna Filler*
400-G-TFWB	4"	PTFE White Buna Filler*
200-G-TFEP	2"	PTFE Ethylene Propylene Filler
300-G-TFEP	3"	PTFE Ethylene Propylene Filler
75-G-TES	3/4"	PTFE Encapsulated Silicone*
100-G-TES	1"	PTFE Encapsulated Silicone*
125-G-TES	1 1/4"	PTFE Encapsulated Silicone*
150-G-TES	1 1/2"	PTFE Encapsulated Silicone*
200-G-TES	2"	PTFE Encapsulated Silicone*
250-G-TES	2 1/2"	PTFE Encapsulated Silicone*
300-G-TES	3"	PTFE Encapsulated Silicone*
400-G-TES	4"	PTFE Encapsulated Silicone*
75-G-TEV	3/4"	PTFE Encapsulated Viton
100-G-TEV	1"	PTFE Encapsulated Viton
125-G-TEV	1 1/4"	PTFE Encapsulated Viton
150-G-TEV	1 1/2"	PTFE Encapsulated Viton
200-G-TEV	2"	PTFE Encapsulated Viton
300-G-TEV	3"	PTFE Encapsulated Viton
400-G-TEV	4"	PTFE Encapsulated Viton
100-G-TFACC	1"	PTFE Accordion**
150-G-TFACC	1 1/2"	PTFE Accordion**
200-G-TFACC	2"	PTFE Accordion**
300-G-TFACC	3"	PTFE Accordion**

\*All FDA Approved Materials

\*\*Recommended for use with VISCOUS FLUIDS ONLY

The Torque (Force) required to close the handles on a pair of Cam & Groove fittings will vary according to the gasket chosen. Due to the nature of the PTFE material, the various PTFE gasket designs will require the most torque, increasing as you go from Envelope to Encapsulated type and finally to Accordion type.

B

