

## DATA-DIRECT Software

DATA-DIRECT software is an easy way to collect and report results in real time from the majority of the measuring instruments in the TESA range that have a data output.

DATA-DIRECT is supplied not only with serial input/output drivers specially configured for TESA's products, but also for those purchased from other manufacturers. It works effectively to give data transfer for your data sheets, database, statistical modules or any other Windows-based applications.

With this user-friendly software you will be able to create your own reports for component inspection.

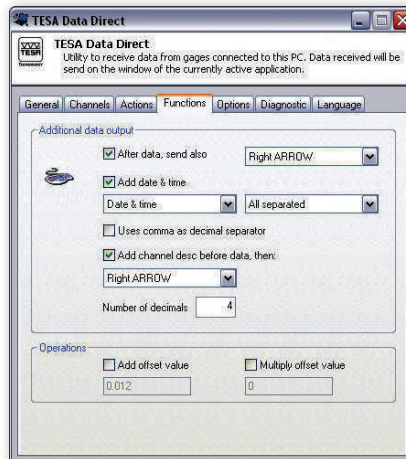
Minimum system requirements to run DATA-DIRECT:

- Pentium 4 or equivalent
- 512 MB RAM (live memory)
- 10 GB HD
- Windows XP, Windows 7 (32 or 64 bits)

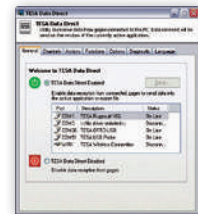
A demonstration version can be downloaded free of charge from the TESA website at [www.tesagroup.com](http://www.tesagroup.com)

Date	Lot No.	Operator	Customer	Instrument	Measure	Time
12.03.2009	13.10.4678	XXX	TESA	OPTO-USB - cal IP 67	1.640	21.01.2010 12:06:06
				USB Probe GT21	-1.033	21.01.2010 12:06:06
				OPTO-USB - cal IP 67	1.640	21.01.2010 12:06:07
				USB Probe GT21	-1.033	21.01.2010 12:06:07
				OPTO-USB - cal IP 67	1.640	21.01.2010 12:06:08
				USB Probe GT21	-1.033	21.01.2010 12:06:08
				OPTO-USB - cal IP 67	1.640	21.01.2010 12:06:09
				USB Probe GT21	-1.033	21.01.2010 12:06:09
				OPTO-USB - cal IP 67	1.640	21.01.2010 12:06:10
				USB Probe GT21	-1.033	21.01.2010 12:06:10
				OPTO-USB - cal IP 67	1.640	21.01.2010 12:06:12
				USB Probe GT21	-1.033	21.01.2010 12:06:12
				OPTO-USB - cal IP 67	1.640	21.01.2010 12:06:13
				USB Probe GT21	-1.033	21.01.2010 12:06:13
				OPTO-USB - cal IP 67	1.640	21.01.2010 12:06:15
				USB Probe GT21	-1.033	21.01.2010 12:06:15

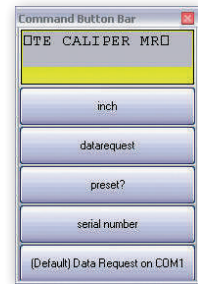
List of measured values within a third party software, e.g. MS Excel



Tab function providing the facility to present the measured values



DATA-DIRECT: main window



Customisable tool bar



Real time display of the measured value in a separate window

			Included in delivery
<b>04981001</b>	DATA-DIRECT Software and dongle	TESA DATA-DIRECT installation CD with licence key (dongle) USB and user instructions (PDF version)	

TESA DATA-DIRECT Software	
TESA Instruments compatible with DATA-DIRECT	OPTO-RS Cables – OPTO-USB Cables – Height gauges (TESA-HITE, MICRO-HITE) – USB probes – Surface roughness gauges RUGOSURF 10 / 20 / 10G / 90G – TESA MICRO-HITE 3D Reflex machines – TESA-SCOPE TS300 – TPS presetting bench – BPX probe interface – TWIN-STATION wireless probe interface – TESA wireless systems – TLC-TWIN wireless transceiver
Other instruments compatible with DATA-DIRECT	Custom made instruments with RS232 output – Instruments from other makers: Mitutoyo: DMX3 - DMX8 – Steinwald single 6 – Etc.
Functions	Export of results to .csv file – ASCII commands – Real time display of measured results on a PC (except for models using the Rf-USB receiver)

