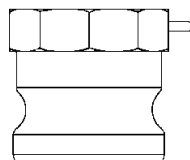


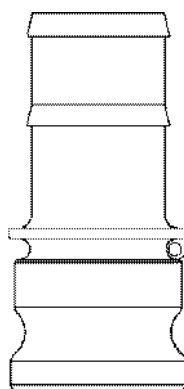
Cam & Groove Type Line Drawings

B



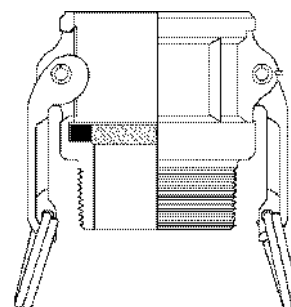
Type A

(male adapter x female NPT)



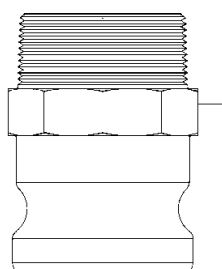
Type E

(male adapter x hose shank)



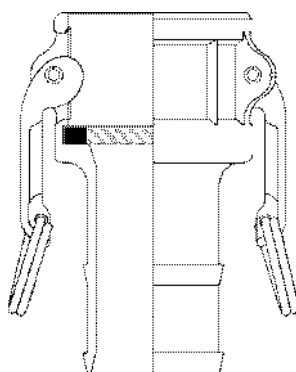
Type B

(female adapter x male NPT)



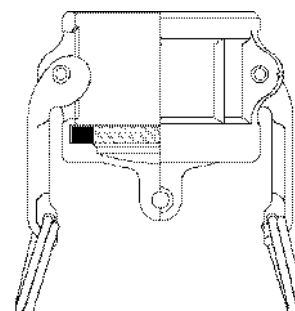
Type F

(male adapter x male NPT)



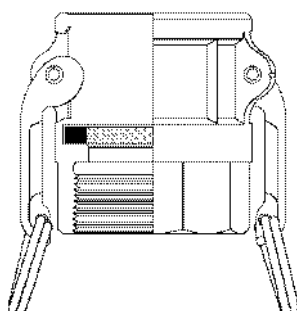
Type C

(female coupler x hose shank)



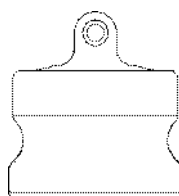
Type DC*

(dust cap)



Type D

(female coupler x female NPT)



Type DP*

(dust plug)

Note: Line drawings are representative of the Dixon line of cam and groove.

* Dust caps and dust plugs are not to be used in pressure applications for safety and environmental reasons.

WARNING:
Under no circumstances should cam and groove couplings be used for compressed air or steam service!

All “Dixon”, “Andrews”, “Boss-Lock” and “EZ Boss-Lock” Cam & Groove couplers and adapters are produced to interchange with all product produced to A-A-59326B.

No standard exists for 1/2”, 5” and 8” fittings, and generally these sizes do not interchange with other manufacturers.

“Andrews” and “Boss-Lock” Cam and Groove Couplings do not interchange in the 8” size. (8” “Andrews” design has 4 cam arms).

DIN Standard Cam & Groove Couplers are produced in accordance with BS EN 14420-7:2004 (formally DIN2828).

Dixon High Pressure couplings will interchange dimensionally with both A-A-59326B and BS EN 14420-7:2004. Couplings for Rubber Hose are available to special order.

Dust Caps and Dust Plugs are **NOT** to be used in pressure applications for safety and environmental reasons.

Threads:

Male threads are either BSPT in accordance with BS21/DIN 2999 or NPT in accordance with ANSI/ASME B1.20.1

Female threads are either BSP PL. in accordance with BS2779/DIN ISO 228 or NPT in accordance with ANSI/ASME B1.20.1

PRESSURE RATINGS FOR A-A-59326B COUPLINGS							
SIZE	0.5in DN15	0.75in-2in DN20-DN50	2.5in DN65	3in DN80	4in DN100	5in and 6in DN125-DN150	8in DN200
A-A-59326B BSEN14420	150 psi	250 psi 10 Bar	150 psi 10 Bar	125 psi 10 Bar	100 psi 10 Bar	75 psi	50 psi

Pressure Ratings for Dixon High Pressure Cam & Groove Couplings – 60 Bar all sizes with the exception of 2.5” x 2” Coupler (HPCG65BSPF) which is 100 bar/1450 psi.

Pressure Ratings for Polypropylene Cam & Groove – 100 psi/7 Bar.

Note: All pressure recommendations are based on mating couplings at ambient temperature 21°C (70°F).

Types:

Andrews / Dixon



Boss Lock



EZ Boss Lock



DIXON CAM & GROOVE TYPE D COUPLER x BSP PL. & NPT THREADS A-A-59326B

BSP PL. PART NO.	NPT PART NO.	SIZE	MATERIAL
50DALB	50DALN	1/2"	Aluminium
75DALB	75DALN	3/4"	Aluminium
100DALB	100DALN	1"	Aluminium
125DALB	125DALN	1 1/4"	Aluminium
150DALB	150DALN	1 1/2"	Aluminium
200DALB	200DALN	2"	Aluminium
250DALB	250DALN	2 1/2"	Aluminium
300DALB	300DALN	3"	Aluminium
400DALB	400DALN	4"	Aluminium
500DALB	500DALN	5"	Aluminium
600DALB	600DALN	6"	Aluminium
800DALB	800DALN	8"	Aluminium
DAL50 DB	DAL50 DN	1/2"	Die Cast Aluminium
DAL75 DB	DAL75 DN	3/4"	Die Cast Aluminium
DAL100 DB	DAL100 DN	1"	Die Cast Aluminium
DAL125 DB	DAL125 DN	1 1/4"	Die Cast Aluminium
DAL150 DB	DAL150 DN	1 1/2"	Die Cast Aluminium
DAL200 DB	DAL200 DN	2"	Die Cast Aluminium
DAL250 DB	DAL250 DN	2 1/2"	Die Cast Aluminium
DAL300 DB	DAL300 DN	3"	Die Cast Aluminium
DAL400 DB	DAL400 DN	4"	Die Cast Aluminium
50DBRB	50DBRN	1/2"	Brass
75DBRB	75DBRN	3/4"	Brass
100DBRB	100DBRN	1"	Brass
125DBRB	125DBRN	1 1/4"	Brass
150DBRB	150DBRN	1 1/2"	Brass
200DBRB	200DBRN	2"	Brass
250DBRB	250DBRN	2 1/2"	Brass
300DBRB	300DBRN	3"	Brass
400DBRB	400DBRN	4"	Brass
500DBRB	500DBRN	5"	Brass
600DBRB	600DBRN	6"	Brass
50DSSB	50DSSN	1/2"	Stainless Steel
75DSSB	75DSSN	3/4"	Stainless Steel
100DSSB	100DSSN	1"	Stainless Steel
125DSSB	125DSSN	1 1/4"	Stainless Steel
150DSSB	150DSSN	1 1/2"	Stainless Steel
200DSSB	200DSSN	2"	Stainless Steel
250DSSB	250DSSN	2 1/2"	Stainless Steel
300DSSB	300DSSN	3"	Stainless Steel
400DSSB	400DSSN	4"	Stainless Steel
500DSSB	500DSSN	5"	Stainless Steel
600DSSB	600DSSN	6"	Stainless Steel
75DPPB	75DPPN	3/4"	Polypropylene
100DPPB	100DPPN	1"	Polypropylene
125DPPB	125DPPN	1 1/2" x 1 1/4"	Polypropylene
150DPPB	150DPPN	1 1/2"	Polypropylene
200DPPB	200DPPN	2"	Polypropylene
300DPPB	300DPPN	3"	Polypropylene
400DPPB	400DPPN	4"	Polypropylene

"ANDREWS" TYPE D - 'REDUCER COUPLER x FEMALE THREAD'

PART NO.	SIZE	THREAD AVAILABLE	MATERIAL
1510-D-AL	1 1/2" x 1"	NPT	Aluminium
2015-D-AL	2" x 1 1/2"	NPT	Aluminium
3020-D-AL	3" x 2"	NPT	Aluminium
4030-D-AL	4" x 3"	NPT	Aluminium
4030-D-BR	4" x 3"	NPT	Brass
2015-D-SS	2" x 1 1/2"	NPT	Stainless Steel

* "Andrews" and "Boss-Lock" Cam and Groove Couplings **DO NOT INTERCHANGE IN THE 8" SIZE.**

The 8" "Boss-Lock" design has 2 cam arms. The 8" "Boss-Lock" were designed to interchange with 8" Cam and Groove couplings manufactured by others.