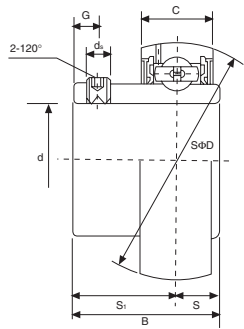




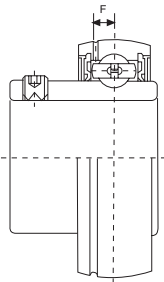
# CUSCINETTI A SFERE SIGILLATI CON GRANI DI BLOCCAGGIO SEALED BALL BEARINGS WITH SET SCREWS



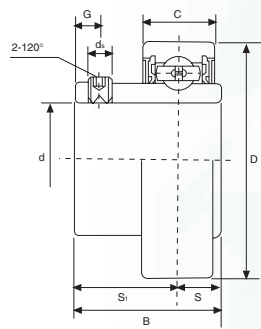
## SB-RB2 Serie leggera Light Series



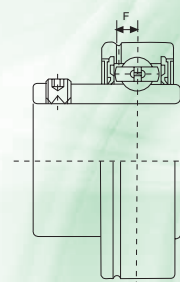
**SB 2**  
anello esterno sferico  
outer spherical ring



**SB 2S**  
anello esterno sferico,  
con sede per seigeer  
outer spherical ring,  
with groove for snap ring



**RB 2C**  
anello esterno cilindrico  
outer cylindrical ring



**RB 2CS**  
anello esterno cilindrico,  
con sede per seigeer  
outer cylindrical ring,  
with groove for snap ring



Suffisso UNF: Misure in pollici dei grani di bloccaggio  
UNF suffix: inch sizes set screws

Tipo Type	Dimensioni mm/pollici Dimensions mm/inch									Coefficienti di carico (N) Load ratings (N)		Peso Weight (kg)
	d	D	B	C	S	S <sub>1</sub>	d <sub>s</sub>	G	F	Dinamico C Dynamic C	Statico C <sub>0</sub> Static C <sub>0</sub>	
SB-RB201 SB-RB201-8	12 3/4	40 1,5748	22 0,8661	12 0,4724	6 0,236	16 0,630	M5x0,8 10-32UNF	4,5 0,177	3,7 0,146	9 200	4 480	0,10 0,10
SB-RB202 SB-RB202-9 SB-RB202-10	15 9/16 5/8	40 1,5748	22 0,8661	12 0,4724	6 0,236	16 0,630	M5x0,8 10-32UNF	4,5 0,177	3,7 0,146	9 200	4 480	0,10 0,10 0,10
SB-RB203 SB-RB203-11	17 1 1/16	40 1,5748	22 0,8661	12 0,4724	6 0,236	16 0,630	M5x0,8 10-32UNF	4,5 0,177	3,7 0,146	9 200	4 480	0,09 0,09
SB-RB204 SB-RB204-12	20 3/4	47 1,8504	25 0,9843	14 0,5512	7 0,276	18 0,709	M6x1 1/4-28UNF	4,5 0,177	3,7 0,146	12 200	6 300	0,13 0,14
SB-RB205 SB-RB205-13 SB-RB205-14 SB-RB205-15 SB-RB205-16	25 1 3/16 7/8 1 5/16 1	52 2,0472	27 1,0630	15 0,5906	7,5 0,295	19,5 0,768	M6x1 1/4-28UNF	5,5 0,217	3,9 0,154	13 300	7 460	0,16 0,19 0,18 0,17 0,16
SB-RB206 SB-RB206-17 SB-RB206-18 SB-RB206-19 SB-RB206-20	30 1 1/16 1 1/8 1 3/16 1 1/4	62 2,4409	30 1,1811	16 0,6299	8 0,315	22 0,866	M6x1 1/4-28UNF	6 0,236	5,0 0,197	18 500	10 800	0,25 0,28 0,26 0,25 0,24
SB-RB207 SB-RB207-20 SB-RB207-21 SB-RB207-22 SB-RB207-23	35 1 1/4 1 5/16 1 3/8 1 7/16	72 2,8346	32 1,2598	17 0,6693	8,5 0,335	23,5 0,925	M8x1 5/16-24UNF	6,5 0,256	5,7 0,224	24 500	14 600	0,38 0,43 0,41 0,38 0,37
SB-RB208 SB-RB208-24 SB-RB208-25	40 1 1/2 1 9/16	80 3,1496	34 1,3386	18 0,7087	9 0,354	25 0,984	M8x1 5/16-24UNF	7 0,276	6,2 0,244	27 700	17 000	0,60 0,58 0,60
SB-RB209 SB-RB209-26 SB-RB209-27 SB-RB209-28	45 1 5/8 1 11/16 1 3/4	85 3,3465	41,2 1,6220	19 0,7480	10,2 0,402	31 1,220	M8x1 5/16-24UNF	8,2 0,323	6,4 0,252	31 100	24 450	0,8
SB-RB210 SB-RB210-29 SB-RB210-30 SB-RB210-31 SB-RB210-32	50 1 3/4 1 7/8 1 15/16 2	90 3,5433	43,5 1,7126	20 0,7874	10,9 0,429	32,6 1,283	M10x1 3/8-24UNF	9,2 0,362	6,5 0,256	35 300	28 160	0,8
SB-RB211 SB-RB211-32 SB-RB211-33 SB-RB211-34 SB-RB211-35	55 2 2 1/16 2 1/8 2 3/16	100 3,9370	45,3 1,7835	21 0,8268	11,8 0,465	33,5 1,319	M10x1 3/8-24UNF	9,8 0,386	7,0 0,276	38 100	30 000	1,1
SB-RB212 SB-RB212-36 SB-RB212-37 SB-RB212-38 SB-RB212-39	60 2 1/4 2 5/16 2 3/8 2 7/16	110 4,3307	53,7 2,1142	22 0,8661	14,9 0,587	38,8 1,528	M10x1 3/8-24UNF	9,8 0,386	7,6 0,299	41 500	32 730	1,3

Disponibile in acciaio inox: AISI 440C  
Available stainless steel: AISI 440C