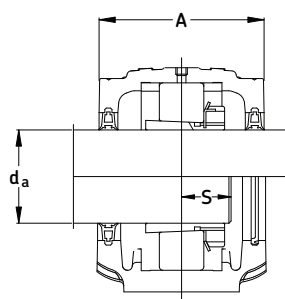
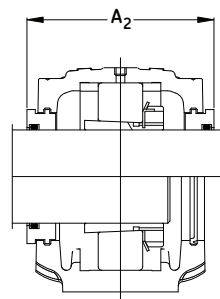


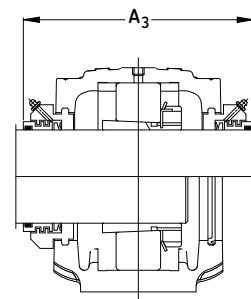
**Series SNL 500 and SNL 600**  
**Pillow blocks of cast iron for**  
**bearing with adapter sleeve,**  
**grease or oil lubrication**  
 **$d_a 2 - 2 \frac{3}{16}$  in (55 mm)**



Double-lip seals  
G & L design



Labyrinth seals  
S design



Taconite seals  
ND design

Shaft Dia. $d_a$	Complete Pillow Block Assembly	Housing	Standard Seal Package	Bearing	Adapter Sleeve	Fixing Rings	Qty.	Mass Complete		End Cover
								lb.	kg.	
mm in								lb.	kg.	
2	SNL 1511/2 TG	SNL 511-609	TSN 511G	1211 EK	HE 211B	FRB 11.5/100	2	11.9	5.40	ASNH 511-609
	SNL 1611/2 TG	SNL 513-611	TSN 611G	1311 EK	HE 311B	FRB 11/120	2	18.6	8.44	ASNH 513-611
	SNL 2511/2 TG	SNL 511-609	TSN 511G	2211 EK	HE 311B	FRB 9.5/100	2	12.2	5.50	ASNH 511-609
	SNL 2611/2 TG	SNL 513-611	TSN 611G	2311 K	HE 2311	FRB 4/120	2	19.8	8.97	ASNH 513-611
	SNL 21611/2 TG	SNL 513-611	TSN 611G	21311 EK	HE 311B	FRB 11/120	2	18.7	8.49	ASNH 513-611
	SNL 22511/2 TG	SNL 511-609	TSN 511G	22211 EK	HE 311B	FRB 9.5/100	2	12.3	5.59	ASNH 511-609
	SNL 22611/2 TG	SNL 513-611	TSN 611G	22311 EK	HE 2311	FRB 4/120	2	20.3	9.22	ASNH 513-611
	SNL C2511/2 TG	SNL 511-609	TSN 511G	C2211 K*	HE 311BE	FRB 9.5/100	2	12.3	5.59	ASNH 511-609
55	SNL 1512/55 TL	SNL 512-610	TSN 512L	1212 EK	H 212	FRB 13/110	2	14.0	6.34	ASNH 512-610
	SNL 1612/55 TG	SNL 515-612	TSN 612G	1312 EK	H 312	FRB 12.5/130	2	20.6	9.34	ASNH 515-612
	SNL 2512/55 TL	SNL 512-610	TSN 512L	2212 EK	H 312	FRB 10/110	2	14.4	6.54	ASNH 512-610
	SNL 2612/55 TG	SNL 515-612	TSN 612G	2312 K	H 2312	FRB 5/130	2	22.0	10.0	ASNH 515-612
	SNL 21612/55 TG	SNL 515-612	TSN 612G	21312 EK	H 312	FRB 12.5/130	2	20.5	9.29	ASNH 515-612
	SNL 22512/55 TL	SNL 512-610	TSN 512L	22212 EK	H 312	FRB 10/110	2	14.5	6.59	ASNH 512-610
	SNL 22612/55 TG	SNL 515-612	TSN 612G	22312 EK	H 2312	FRB 5/130	2	22.7	10.3	ASNH 515-612
	SNL C2512/55 TL	SNL 512-610	TSN 512L	C2212 K*	H 312E	FRB 10/110	2	14.5	6.59	ASNH 512-610
$2 \frac{3}{16}$	SNL 1513/2 $\frac{3}{16}$ TGA	SNL 513-611	TSN 513GA	1213 EK	HA 213	FRB 14/120	2	17.2	7.80	ASNH 513-611
	SNL 1613/2 $\frac{3}{16}$ TGA	SNL 516-613	TSN 613GA	1313 EK	HA 313	FRB 12.5/140	2	27.3	12.4	ASNH 516-613
	SNL 2513/2 $\frac{3}{16}$ TGA	SNL 513-611	TSN 513GA	2213 EK	HA 313	FRB 10/120	2	17.9	8.10	ASNH 513-611
	SNL 2613/2 $\frac{3}{16}$ TGA	SNL 516-613	TSN 613GA	2313 K	HA 2313	FRB 5/140	2	29.1	13.2	ASNH 516-613
	SNL 21613/2 $\frac{3}{16}$ TGA	SNL 516-613	TSN 613GA	21313 EK	HA 313	FRB 12.5/140	2	27.3	12.4	ASNH 516-613
	SNL 22513/2 $\frac{3}{16}$ TGA	SNL 513-611	TSN 513GA	22213 EK	HA 313	FRB 10/120	2	18.0	8.16	ASNH 513-611
	SNL 22613/2 $\frac{3}{16}$ TGA	SNL 516-613	TSN 613GA	22313 EK	HA 2313	FRB 5/140	2	29.8	13.5	ASNH 516-613
	SNL C2513/2 $\frac{3}{16}$ TGA	SNL 513-611	TSN 513GA	C2213 K*	HA 313E	FRB 10/120	2	18.0	8.16	ASNH 513-611

\* Must always be located.