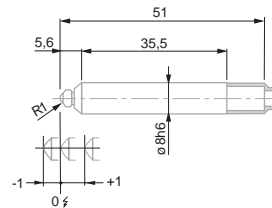


## GT 43 / GT 44 Miniature Probes, ± 1,0 mm , 2,1 mm Bolt Travel

Compact probes for use in small spaces – Designed to be mounted on a measuring head for the inspection of bores and similar features.



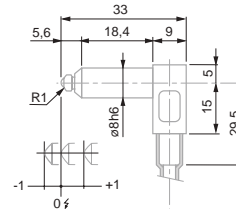
GT 43



GT 43



GT 44



GT 44

			Measuring range, mm	Nominal measuring force*, N	Bolt retraction	Sealing bellows
03230035	GT 43	± 1	0,4	Mechanical	Viton	
03230017	GT44	± 1	0,4	Vacuum	Viton	

	Measuring bolt travel, mm	Max. permissible error for deviations in linearity, µm (L en mm)	Repeatability, µm	Hysteresis, µm	Setting of lower stop of bolt***, mm	Cable output	Data sheet No.	
GT 43	2,1	0,2 + 5 · L <sup>2</sup>	0,1	0,15	Fixed stops: lower -1,05 upper +1,05	Axial	03200260	
GT44	2,1	0,2 + 5 · L <sup>2</sup>	0,1	0,15	Fixed stops: lower -1,05 upper +1,05	Radial	03200261	

\* Electrical zero (N) ± 25 % deviation limit. Valid in vertical mounting position, measuring bolt lowered and in static measuring.

\*\* For an amplitude of 10 % to the last value of the measuring range.

\*\*\* Distance from electrical zero.



DIN 32876 Part 1



See table



Nickel-plated housing, Stainless steel measuring bolt, hardened. Sealing bellows: Nitrile = resistant elastomer. Viton = highly resistant fluoroelastomer.



Fixing shank Ø 8 mm. Ball-bearing measuring bolt. Both lower and upper stops are fixed. Interchangeable insert. Carbide ball tip Ø 3 mm. 2 m long cable. 5-pin DIN 45322 connector.



Supply frequency: 13 kHz (± 5 %) Max. mechanical frequency\*\*: 60 Hz.



0,1 µm/°C



20 ± 0,5°C



-10°C to 65°C



80 %



Level of protection: IP65 (IEC 60529)



Mobile weight: 2 g



Transport packaging



Identification number



Inspection report with a declaration of conformity

