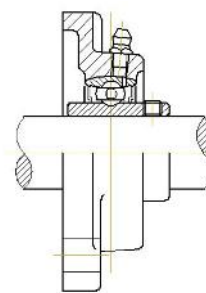
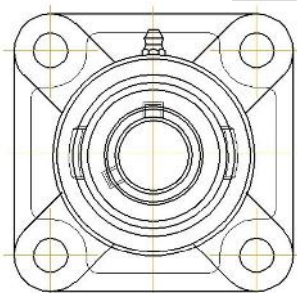
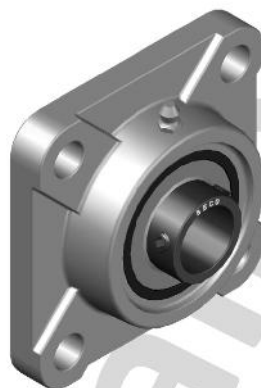
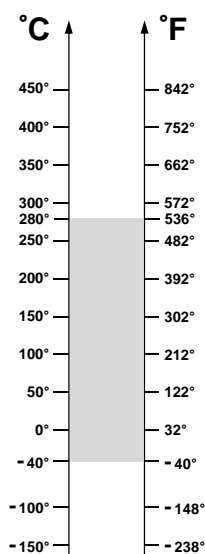


BHTS ZZ 280° (UCF Serie)

Pillow Block for Extreme Temperature



* Dimensions available at PILLOW BLOCK HOUSINGS Pages

OPERATING RANGE: -40° / 280°C

ECONOMIC OPERATING RANGE: 200° / 280°C

Unit code	Bearing code	Housing code
UCF 201 BHTS ZZ 280°	UC 201 BHTS ZZ 280°	F 204 SS
UCF 202 BHTS ZZ 280°	UC 202 BHTS ZZ 280°	F 204 SS
UCF 203 BHTS ZZ 280°	UC 203 BHTS ZZ 280°	F 204 SS
UCF 204 BHTS ZZ 280°	UC 204 BHTS ZZ 280°	F 204 SS
UCF 205 BHTS ZZ 280°	UC 205 BHTS ZZ 280°	F 205 SS
UCF 206 BHTS ZZ 280°	UC 206 BHTS ZZ 280°	F 206 SS
UCF 207 BHTS ZZ 280°	UC 207 BHTS ZZ 280°	F 207 SS
UCF 208 BHTS ZZ 280°	UC 208 BHTS ZZ 280°	F 208 SS
UCF 209 BHTS ZZ 280°	UC 209 BHTS ZZ 280°	F 209 SS
UCF 210 BHTS ZZ 280°	UC 210 BHTS ZZ 280°	F 210 SS
UCF 211 BHTS ZZ 280°	UC 211 BHTS ZZ 280°	F 211 SS
UCF 212 BHTS ZZ 280°	UC 212 BHTS ZZ 280°	F 212 SS
UCF 213 BHTS ZZ 280°	UC 213 BHTS ZZ 280°	F 213 SS
UCF 214 BHTS ZZ 280°	UC 214 BHTS ZZ 280°	F 214 SS
UCF 215 BHTS ZZ 280°	UC 215 BHTS ZZ 280°	F 215 SS

OPERATING RANGE is the correct technical range in which can be used the bearing with good operating result.

ECONOMIC OPERATING RANGE is the range of temperature in which you can find, according to our study experience and know-how, the better relation price - quality life-time.