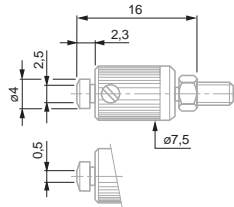


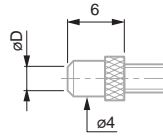
Insert with a narrow measuring face
Parallelism adjustable
Lock nut for radial alignment



03510702 Carbide



Inserts with a flat measuring face.

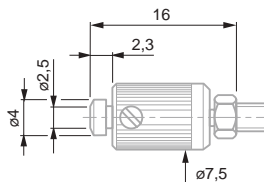


03510801	2,5	Steel
03510802	2,5	Carbide
03560022	3,4	Steel
03560023	3,4	Carbide

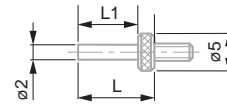
Insert with a flat measuring face
Parallelism adjustable
Counter-nut for radial alignment



03510902 Métal dur



Inserts with a flat measuring face, in steel

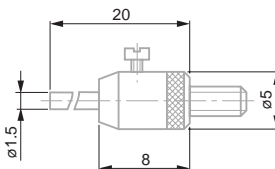


No.	L, mm	L1, mm
03560026	5	2,8
03560027	10	7,8
03560028	15	12,8
03560029	20	17,8

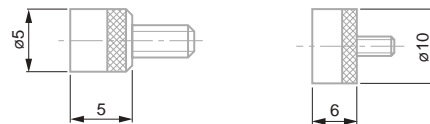
Inserts with interchangeable pins
Flat measuring face



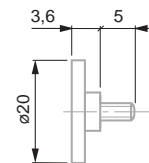
03560008 Steel
03560009 Carbide



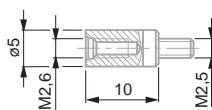
Inserts with flat measuring face



03560012	5	Steel
03560013	5	Carbide
03560014	10	Steel
03560015	10	Carbide
03560016	20	Steel



Connectors for measuring inserts



No.	Outside	Inside
03560092	M2,5	M2
03560065	M3	M2,5

Extensions for measuring inserts



No.	L, mm
03560042	10
03560043	15
03560044	20
03560045	25
03560046	30
03560047	35
03560048	40
03560049	45
03560050	50

