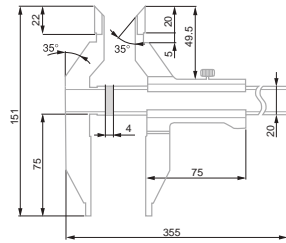
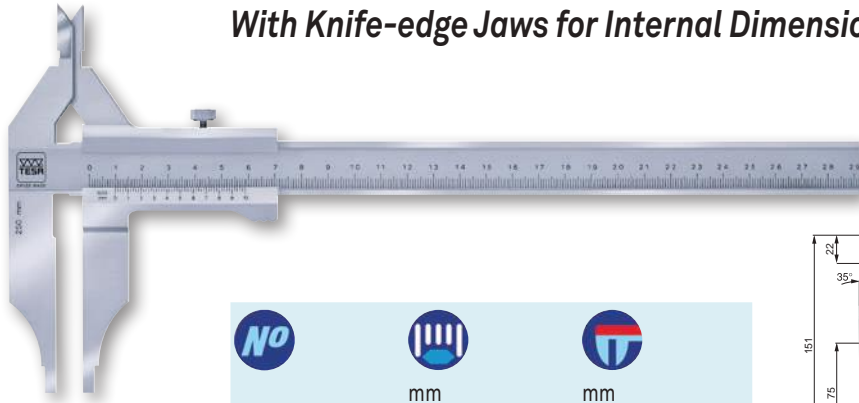


With Knife-edge Jaws for Internal Dimensions

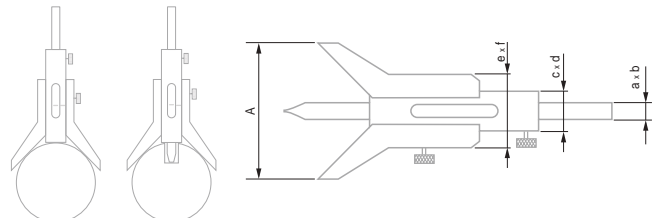
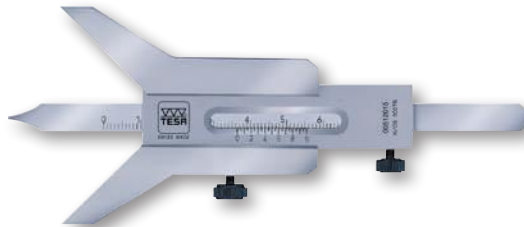


00510915	0 ÷ 250	0,02

- DIN 862 (Style DN-2) NFE 11-091
- Hardened stainless steel
- Plastic storage case
- Inspection report with a declaration of conformity
- Serial number identification
- Satin-chrome scale background; main scale set back slightly for protection against wear

With Vee Bridge

Made to measure groove and slot depths on cylindrical shafts.

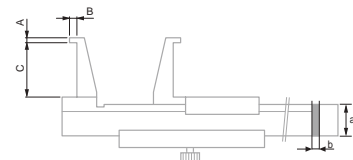
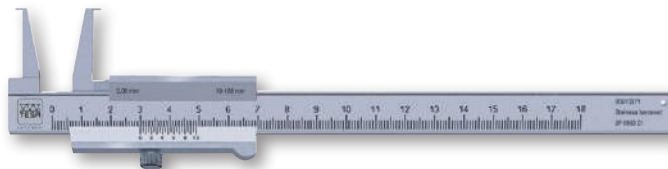


No									
00512015	5 ÷ 80	0,05	8	2	18	5	32	10	60
00512016	6 ÷ 120	0,05	8	2	18	5	34	10	90
00512017	7 ÷ 160	0,05	10	2	21,5	5	42	10	120

- NFE 11-096
- Hardened stainless steel
- Plastic storage case
- Inspection report with a declaration of conformity
- Serial number identification
- Satin-chrome scale background; main scale set back slightly for protection against wear

For Turned Grooves

Specially designed for measuring groove or slot diameters, e.g. on safety rings.



No							
00510371	10 ÷ 160	0,05	16	3	0,9	3	25
00510375	20 ÷ 160	0,05	16	3	2	5	40
00510383	26 ÷ 200	0,02	16	3	3	7	60
00510385	26 ÷ 200	0,05	16	3	3	7	60
00510387	30 ÷ 250	0,02	20	4	4	8,5	80
00510393	35 ÷ 300	0,02	20	4	5	10	100

- Factory standard
- Hardened stainless steel
- Plastic storage case
- Inspection report with a declaration of conformity
- Serial number identification
- Satin-chrome scale background; main scale set back slightly for protection against wear

