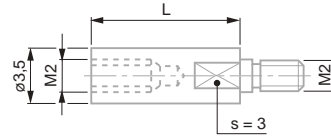


## INSERTS FOR AXIAL PROBES, WITH M2 THREAD

### Extensions for Inserts with M2 Thread

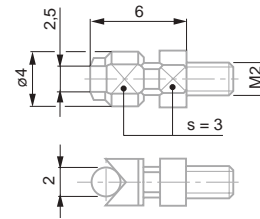
No		L, mm
03540505		10
03540506		15



03540505, 03540506

### Measuring Insert with Cylindrical Measuring Face, Lock Nut for Radial Alignment, M2 Thread

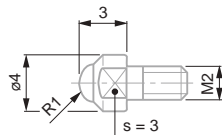
No			L, mm
03510503	Carbide		6



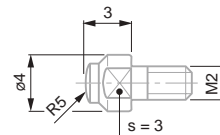
03510503

### Hemispherical Measuring Inserts, M2 Thread

No		R, mm	Material	L, mm
03510204		R 1	Carbide	3
03510103		R 5	Carbide	3



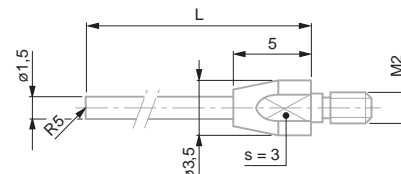
03510204



03510103

### Spherical Measuring Inserts, R = 5 mm, M2 Thread

No			L, mm
03510202	Carbide		16
03510203	Carbide		26



03510202, 03510203

