

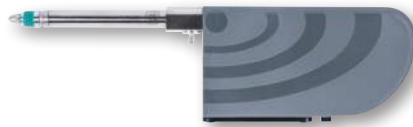
Wireless Pneumatic Probe $\pm 1,5$ mm

Probes developed for devices requiring a greater freedom of movement during the measurement or for parts with large dimensions.

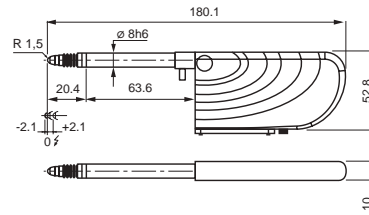
Bidirectional and wireless communication synchronized with the TWIN-STATION Receiver.

- Resolution 0,1 μ m.
- Range of 8 m, depending on environment.
- TESA wireless communication protocol independent from WiFi or Bluetooth
- Autonomy 40 hours (rechargeable battery).
- Support structure \varnothing 8 mm with enhanced clamping over its entire length
- Measuring rod mounted on ball bearing.
- Separate guide bearing on the holding body in order not to negatively influence the movement of the measuring rod in the event of improper clamping of the probe beads.
- Level of protection IP54 according to IEC 60529.
- Wide range of measurement probes.
- Swiss made.
- The TWIN-STATION (part number 05030012) manages and synchronizes up to 8 wireless probes.
- Interface Software TIS included in delivery content of the TWIN-STATION (art. 05030012): display of measured values, possibility to indicate tolerances, simple functions +A, -A, +A+B, +A-B, and export of values in a .csv file.

Note: The sale is limited to EU countries, Switzerland, USA, Canada and China.



GTL 212 W



GTL 212 W

03230501	GTL 212	Measuring range, mm $\pm 1,5$	Nominal measuring force*, N 1,2	Bolt retraction Pressure (bolt activation), spring (bolt retraction)	Sealing bellows Viton	Nominal/maximal pressure, bar 0,7 / max. 1,0

OPTIONAL ACCESSORY:

05030012 TWIN Station Interface for wireless probes

GTL 212 W	Max. measuring bolt travel, mm 4,3	Maximum permissible error, μ m (L in mm) 0,4 + 0,8 · L	Repeatability, μ m 0,10	Hysteresis, μ m 0,5	Setting of lower stop of the measuring bolt***, mm Fixed stops: lower -2,1 upper +2,1	Cable output Without cable	Data sheet No. 03200620

* Electrical zero (N) ± 25 % deviation limit. Valid in vertical mounting position, measuring bolt lowered and in static measuring.

** For an amplitude of 10 % to the last value of the measuring range.

*** Distance from electrical zero.

- DIN 32876 Part 1
- See table
- Nickel-plated housing
Stainless steel measuring bolt, hardened
Viton sealing bellows = highly resistance fluororelastomer
- Fixing body nickel \varnothing 8 mm
Stainless steel measuring bolt, hardened and ball bearing guided
Fixed upper and lower stops
Probe interchangeable
M2,5 thread
Carbide ball \varnothing 3 mm
Mini jack connector for charger.
- Mechanical max. frequency**: 60 Hz
Power supply: 100 \div 240 VAC, 50 \div 60 Hz; 240 mAh
Rechargeable battery: 3,7 V, min. 550 mAh or 800 mAh
Frequency band: 2,4 GHz
Range: 8 m, depending on environment.
- $\pm 0,2$ μ m/ $^{\circ}$ C
- $20 \pm 0,5$ $^{\circ}$ C
- 10° C to 40° C
- 80 %
- Protection IP54 (IEC 60529)
- GTL 212 W: 6g
- Transport packaging
- Identification number
- Inspection report with a declaration of conformity

