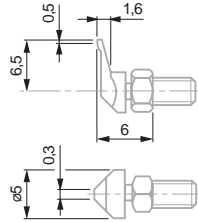
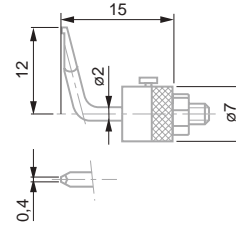


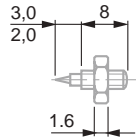
Measuring insert with offset (A)
Pointed measuring face
Lock nut for radial alignment.



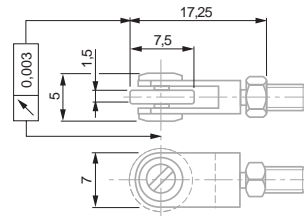
Measuring insert with offset (A)
Pointed measuring face
Lock nut for radial alignment.



Measuring insert with needle contact point

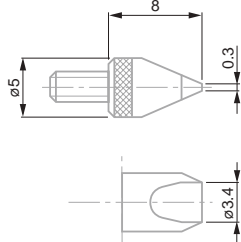


Measuring inserts with ball-bearing rollers
Lock nut for radial alignment



No			
		Shape	
03560010		Cylindrical	Steel
03560011		Domed	Steel

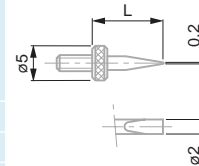
Inserts with a knife blade measuring face
Lock nut for radial alignment



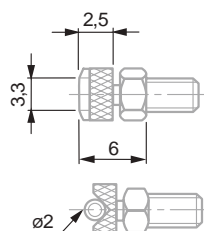
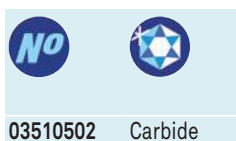
No			B, mm
03560024	Steel		0,3
03560025	Steel		0,3

Inserts with a knife blade steel face
Lock nut for radial alignment

No			L, mm
03560031			5
03560032			10
03560033			15
03560034			20



Insert with a cylindrical measuring face
Lock nut for radial alignment



Insert with a narrow, off-centre measuring face
Lock nut for radial alignment

