

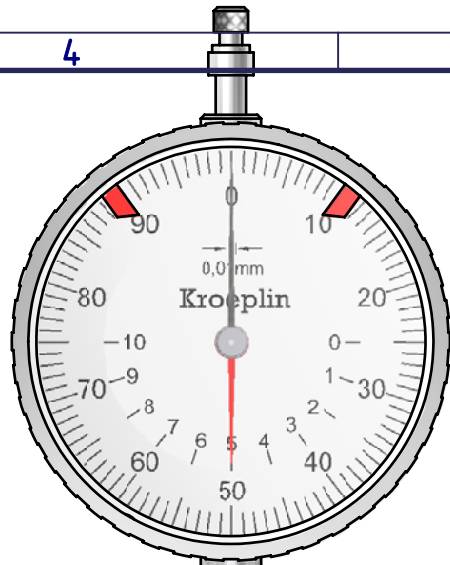
type: **Aresosol**
range: **4,0 - 8,5 mm**
range of indication:
digital step:
scale interval: **0,01 mm**
measuring force: **4 - 10 N**
weight: **ca. 600g**

acceptable deviations
VDI/VDE/DGQ 2618 Bl. 12.1/13.1)
max. permissible
errors "G": **0,06 mm**
repeatability "r": **0,03 mm**
reference temperature: **20° C**
operation temperature: **10° C - 30° C**
storage temperature: **-10° C - 50° C**

scale: **1:1**
drawing-nr.: **IDW-A1166-DB_e**
date of issue: **23.11.10**
name: **J.Heuser**
revision status: **002**
revision date: **27.10.2010**

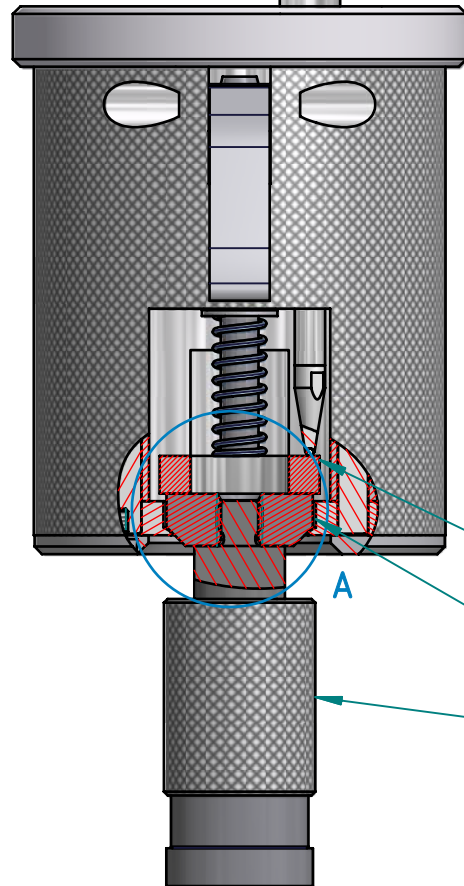
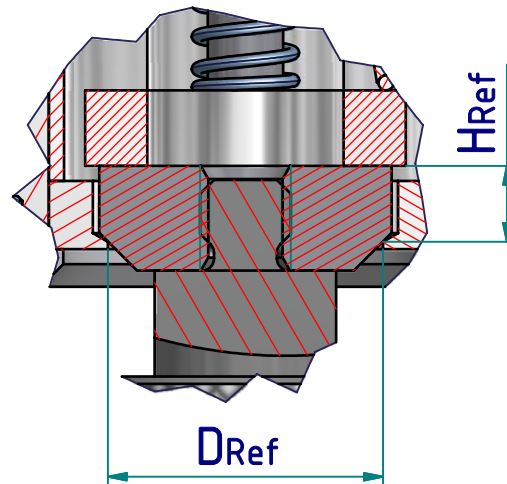
A1160 - A1169

calibration



Adjustment of the dial gauge
on reference-height (H_{Ref})

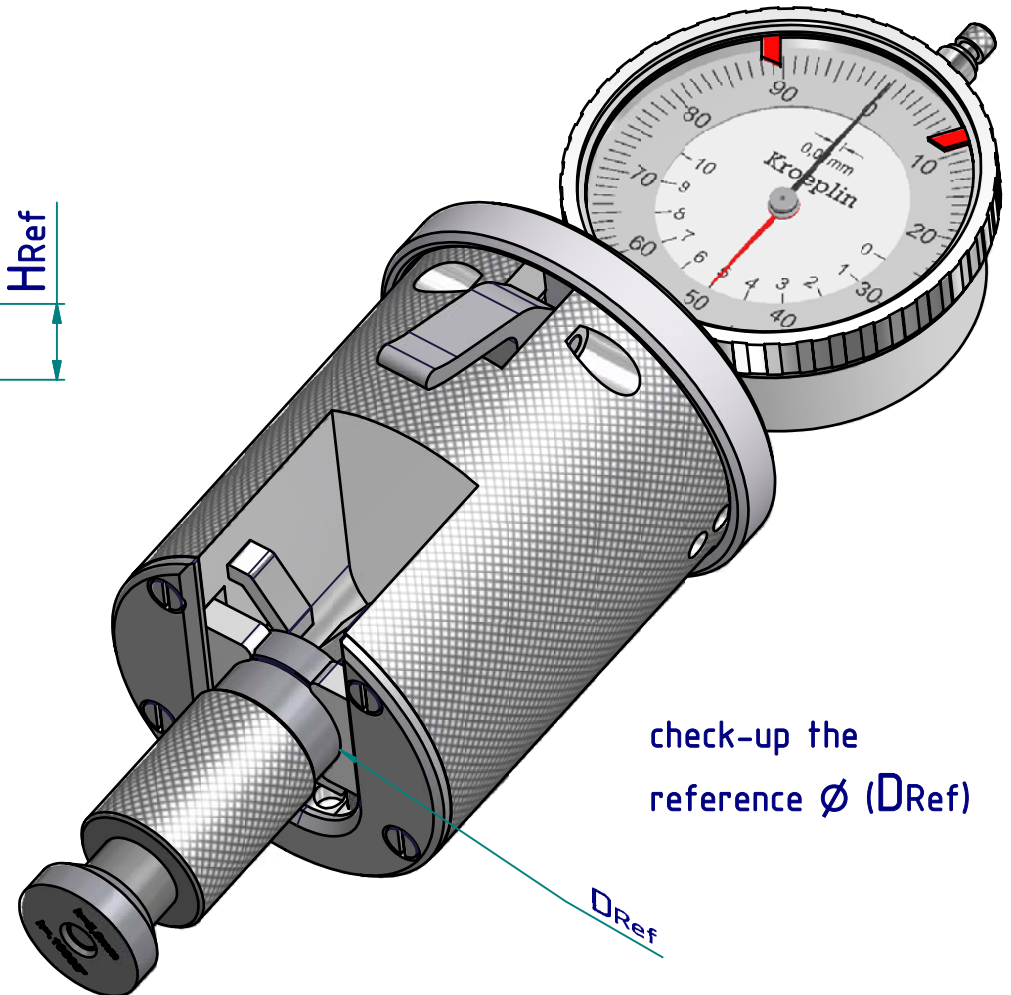
A (2 : 1)



(1) holding-down clamp

(2) jaws

(3) calibration part



check-up the
reference \varnothing (D_{Ref})

4

3

2

1

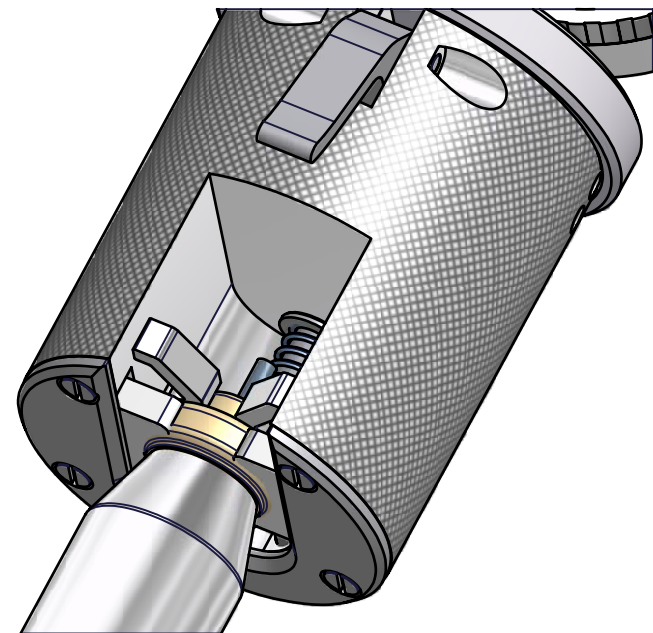
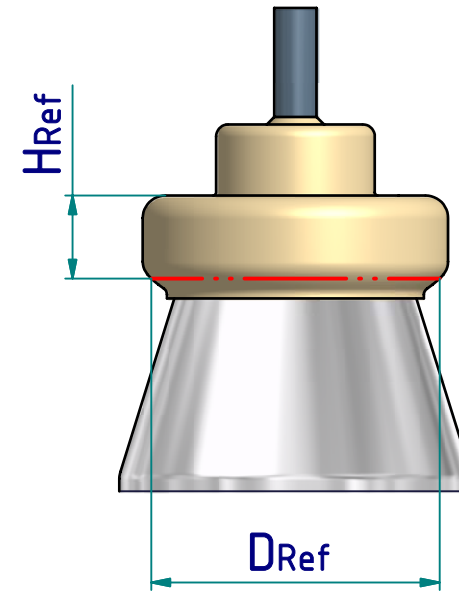
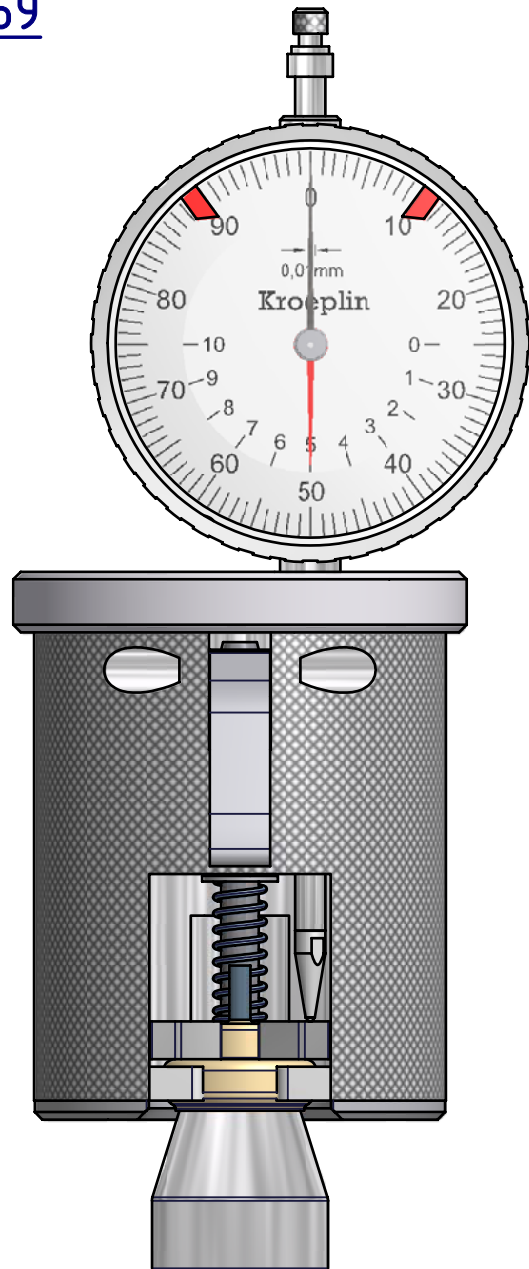
A1160 - A1169
maesurement

D

C

B

A



4

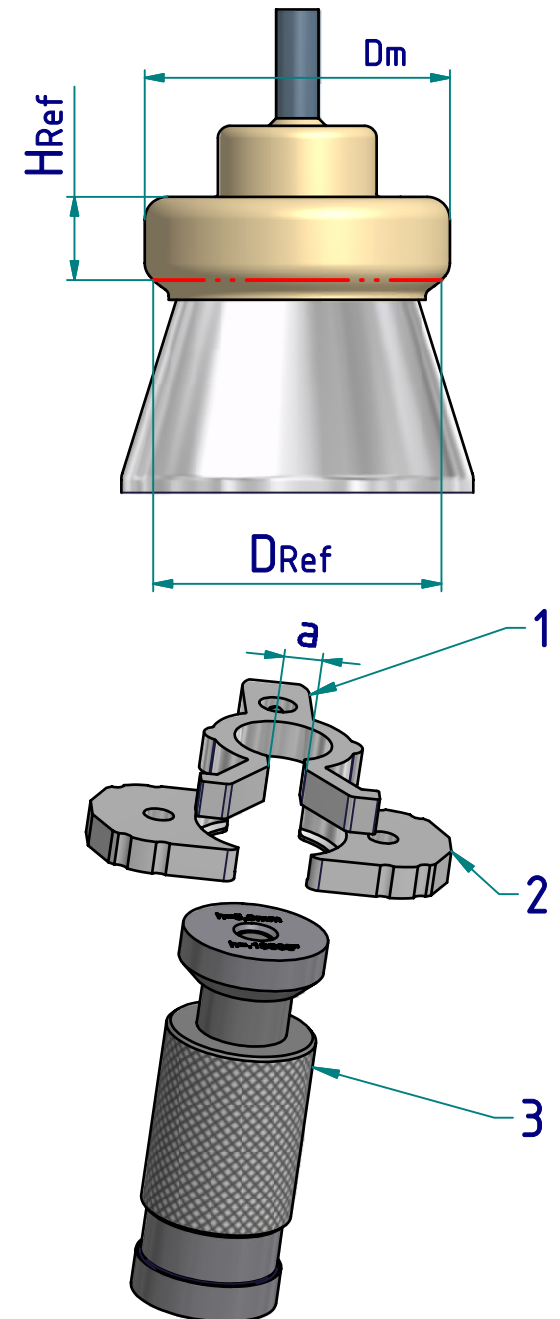
3

2

1

A1160 – A1169 chart of types

instrument, Order-No.	mouth - diameter "Dm"	reference- diameter "DRef"	reference - height "HRef"	Order-No. jaw (Pos2)	Order-No. Holding-down clamp	a [mm]	Order-No. Calibration- part
A1161 A1161 i	14 mm	13,50 mm .5315 inch	5,00 mm .19685 inch	0840-14	0840-11	5	0761-32
A1162 A1162 i	15 mm	14,70 mm .5787 inch	7,00 mm .27559 inch	0840-10	0840-19	5	0761-40
A1163 A1163 i	16 mm	15,00 mm .5905 inch	5,00 mm .19685 inch	0840-17	0840-19	5	0761-38
A1164 A1164 i	16 mm	15,40 mm .6063 inch	5,00 mm .19685 inch	0840-16	0840-11	5	0761-34
A1166 A1166 i	19 mm	18,20 mm .7165 inch	5,00 mm .19685 inch	0840-18	0840-19	5	0761-39
A1167 A1167 i	20 mm	19,00 mm .76 inch	5,12 mm .20157 inch	0840-03	0840-04	14,6	0761-23
A1168 A1168 i	20 mm	19,40 mm .7638 inch	7,00 mm .27559 inch	0840-12	0840-04	14,6	0761-41
A1169 A1169 i	20 mm	19,85 mm .7795 inch	5,00 mm .19685 inch	0840-02	0840-04	14,6	0761-15



Please inquire further dimensions.

All instruments are supplied with corresponding jaws,
holding-down clamp and calibration part in a wooden case.

For conversion of a crimpertest you need:

- 1 pc. holding-down clamp
- 2 pcs. jaws
- 1 pc. calibration part